



Mobility
Networks
Logistics



Deutsche Bahn
DB Mobility Logistics
Facts & Figures 2013

DB2020 Strategy



Our future:
Sustainably successful

Our three dimensions



Our four strategic directions



Contents

2 DB GROUP

- 2 The Management Boards of DBAG and DBML AG
- 2 Organizational structure
- 4 Supervisory Board

5 KEY FIGURES

- 5 Performance figures
- 6 Financial figures
- 7 Value management
- 8 Customer and quality
- 9 Social
- 11 Environmental
- 12 Development by business units
- 14 Development by regions

15 FIGURES BY BUSINESS UNITS

- 15 Overview passenger transport
- 17 DB Bahn Long-Distance
- 19 DB Bahn Regional
- 20 DB Arriva
- 21 DB Schenker Rail
- 22 DB Schenker Logistics
- 23 DB Services
- 23 DB Netze Track
- 25 DB Netze Stations
- 25 DB Netze Energy

26 10-YEAR SUMMARIES

- 26 Rail performance figures
- 26 Employees
- 28 Statement of income
- 28 Operating profit figures/Value management
- 30 Cash flow/Capital expenditures
- 30 Balance sheet

32 CONTACT ADDRESSES

36 SERVICE NUMBERS

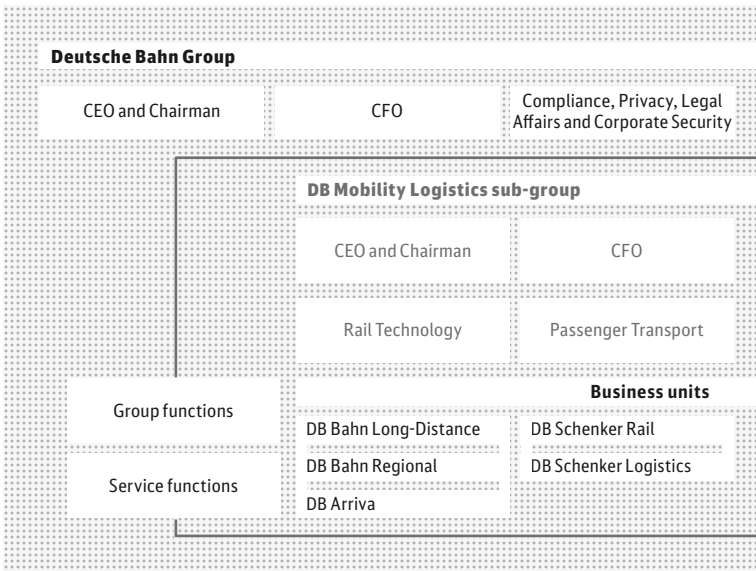
36 FINANCIAL CALENDAR

DB Group

THE MANAGEMENT BOARDS OF DB AG AND DB ML AG



Organizational structure



From left to right:

Dr. Volker Kefer

Infrastructure and Services
Born in 1956
Appointed until 2017
Since 2006 in DB Group
□ Deutsche Bahn AG
□ DB Mobility Logistics AG

Ulrich Homburg

Passenger Transport
Born in 1955
Appointed until 2019
Since 2000 in DB Group
□ DB Mobility Logistics AG

Dr. Karl-Friedrich Rausch

Transport and Logistics
Born in 1951
Appointed until 2015
Since 2001 in DB Group
□ DB Mobility Logistics AG

Dr. Rüdiger Grube

CEO and Chairman
Born in 1951
Appointed until 2017
Since 2009 in DB Group
□ Deutsche Bahn AG
□ DB Mobility Logistics AG

Dr. Heike Hanagarth

Rail Technology
Born in 1959
Appointed until 2016
Since 2013 in DB Group
□ Deutsche Bahn AG
□ DB Mobility Logistics AG

Dr. Richard Lutz

CFO
Born in 1964
Appointed until 2018
Since 1994 in DB Group
□ Deutsche Bahn AG
□ DB Mobility Logistics AG

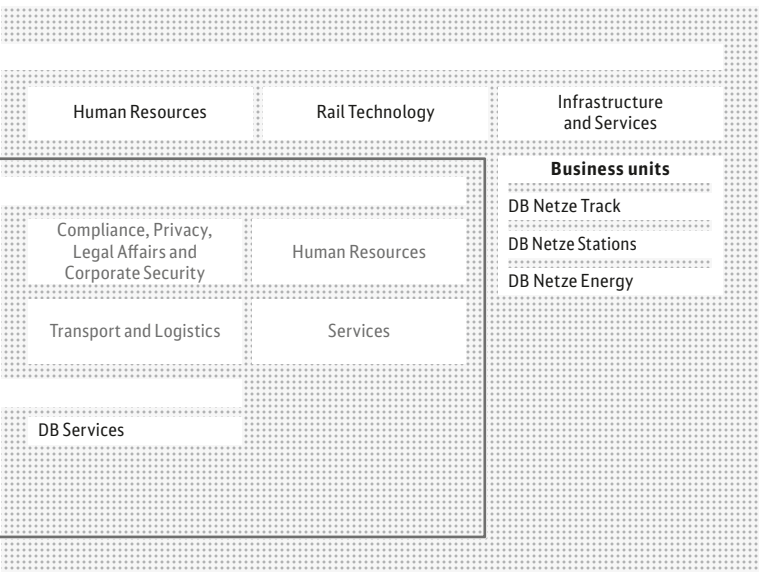
Gerd Becht

Compliance, Privacy, Legal Affairs and Corporate Security
Born in 1952
Appointed until 2017
Since 2009 in DB Group
□ Deutsche Bahn AG
□ DB Mobility Logistics AG

Ulrich Weber

Human Resources
Born in 1950
Appointed until 2017
Since 2009 in DB Group
□ Deutsche Bahn AG
□ DB Mobility Logistics AG

Information regarding the CVs at:
www.db.de/man-board



SUPERVISORY BOARD

Deutsche Bahn AG

- Prof. Dr. Dr. Utz-Hellmuth Felcht
Chairman of the
Supervisory Board
- Alexander Kirchner*
Deputy Chairman
of the Supervisory Board
- Jürgen Beuttler*
- Christoph Dänzer-Vanotti
- Patrick Döring
- Dr.-Ing. Dr. E.h. Jürgen Großmann
- Jörg Hensel*
- Klaus-Dieter Hommel*
- Wolfgang Joosten*
- Dr. Jürgen Krumnow
- Prof. Dr. Knut Löschke
- Vitus Miller*
- Fred Nowka*
- Michael Odenwald
- Mario Reiß*
- Regina Rusch-Ziemba*
- Jens Schwarz*
- Dr. Rainer Sontowski
- Dr.-Ing. E.h. Dipl.-Ing.
Heinrich Weiss

DB Mobility Logistics AG

- Prof. Dr. Dr. Utz-Hellmuth Felcht
Chairman of the
Supervisory Board
- Wolfgang Zell*
Deputy Chairman
of the Supervisory Board
- Wolfgang Erler*
- Margarita Kiefer*
- Alexander Kirchner*
- Dr. Jürgen Krumnow
- Heike Moll
- Michael Odenwald
- Helmut Polzer*
- Dr. Rainer Sontowski
- Dr.-Ing. E.h. Dipl.-Ing.
Heinrich Weiss

* Employees' representative on the Supervisory Board.
Information as of March 14, 2014.

Key figures

PERFORMANCE FIGURES

	2013	2012	± absolute	± %
PASSENGER TRANSPORT (RAIL AND BUS)				
Passengers (million)	4,355	4,120	+235	+5.7
Passengers per day (million)	11.9	11.3	+0.6	+5.3
RAIL PASSENGER TRANSPORT				
Passengers (million)	2,235	2,152	+83	+3.9
thereof in Germany	2,016	1,974	+42	+2.1
Passengers per day (million)	6.1	5.9	+0.2	+3.4
Volume sold (million pkm ¹⁾)	88,746	88,433	+313	+0.4
Volume produced (million train-path km ²⁾)	765.8	760.2	+5.6	+0.7
Trains per day ³⁾	25,193	25,295	-102	-0.4
BUS TRANSPORT				
Passengers (million)	2,120	1,968	+152	+7.7
Passengers per day (million)	5.8	5.4	+0.4	+7.4
Volume sold ³⁾ (million pkm ¹⁾)	8,375	8,421	-46	-0.5
Volume produced (million bus km ⁴⁾)	1,574	1,424	+150	+10.5
RAIL FREIGHT TRANSPORT				
Freight carried (million t)	390.1	398.7	-8.6	-2.2
Volume sold (million tkm ⁵⁾)	104,259	105,894	-1,635	-1.5
Volume produced (million train-path km ²⁾)	196.0	203.1	-7.1	-3.5
Trains per day	4,891	5,034	-143	-2.8
Mean transport distance (km)	267.3	265.6	+1.7	+0.6
Capacity utilization (t per train)	531.9	521.4	+10.5	+2.0
FREIGHT FORWARDING AND LOGISTICS				
Shipments in European land transport (thousand)	95,543	95,325	+218	+0.2
Air freight volume (export) (thousand t)	1,092	1,095	-3	-0.3
Ocean freight volume (export) (thousand TEU ⁶⁾)	1,891	1,905	-14	-0.7
INFRASTRUCTURE				
Train kilometers on track infrastructure (million train-path km ²⁾)	1,035	1,039	-4	-0.4
thereof non-Group customers	247.4	230.6	+16.8	+7.3
Station stops (million)	146.2	146.4	-0.2	-0.1
thereof non-Group customers	27.2	26.6	+0.6	+2.3

¹⁾ Passenger kilometers: product of number of passengers and mean travel distance.

²⁾ Train-path kilometers: driving performance in km of trains on rail.


³⁾ Excluding DB Arriva.

⁴⁾ Bus kilometers: driving performance in km of buses on road.

⁵⁾ Ton kilometers: product of freight carried and mean transport distance.

⁶⁾ TEU: twenty-foot equivalent unit.

FINANCIAL FIGURES

 [€ million]	2013	2012	± absolute	± %
REVENUES AND PROFIT				
Revenues adjusted	39,119	39,296	-177	-0.5
Revenues comparable	39,165	39,293	-128	-0.3
Profit before taxes on income	876	1,525	-649	-42.6
Net profit for the year	649	1,459	-810	-55.5
EBITDA adjusted	5,139	5,601	-462	-8.2
EBIT adjusted	2,236	2,708	-472	-17.4
BALANCE SHEET AS OF DEC 31				
Non-current assets	43,949	44,241	-292	-0.7
Current assets	8,945	8,284	+661	+8.0
Equity	14,912	14,978	-66	-0.4
Net financial debt	16,362	16,366	-4	-
Total assets	52,894	52,525	+369	+0.7
VALUE MANAGEMENT				
Capital employed as of Dec 31	33,086	32,642	+444	+1.4
Return on capital employed (ROCE) (%)	6.8	8.3	-	-
Redemption coverage (%)	20.5	22.1	-	-
Gearing (%)	110	109	-	-
Net financial debt/EBITDA (multiple)	3.2	2.9	-	-
CASH FLOW/CAPITAL EXPENDITURES				
Gross capital expenditures	8,224	8,053	+171	+2.1
Net capital expenditures	3,412	3,487	-75	-2.2
Cash flow from operating activities	3,730	4,094	-364	-8.9
RATING				
Moody's	Aa1, negative	Aa1, negative	-	-
Standard & Poor's	Aa, stable	Aa, stable	-	-
Fitch	Aa, stable	Aa, stable	-	-
DB ML GROUP				
Revenues	37,988	37,812	+176	+0.5
EBITDA adjusted	3,277	3,541	-264	-7.5
EBIT adjusted	1,472	1,772	-300	-16.9
Net financial debt	9,577	9,592	-15	-0.2
ROCE (%)	10.3	12.5	-	-
Redemption coverage (%)	20.2	21.7	-	-
Gearing (%)	308	324	-	-
Net financial debt/EBITDA (multiple)	2.9	2.7	-	-
Gross capital expenditures	2,127	2,318	-191	-8.2
Net capital expenditures	2,101	2,274	-173	-7.6
Cash flow from operating activities	2,530	2,652	-122	-4.6

VALUE MANAGEMENT

	DB Group	DB ML Group	Infra-structure
Value management targets [%]			
ROCE target	10.0	14.0	8.0
Redemption coverage	30	50	30
Gearing	100	100	100
Net financial debt/EBITDA (multiple)	2.5	1.5	2.5

	2013	2012	± absolute	± %
ROCE [€ million]				
EBIT adjusted	2,236	2,708	- 472	- 17.4
÷ Capital employed as of Dec 31	33,086	32,642	+ 444	+ 1.4
ROCE (%)	6.8	8.3	-	-

	2013	2012	± absolute	± %
Redemption coverage [€ million]				
EBITDA adjusted	5,139	5,601	- 462	- 8.2
+ Net operating interest ^{1), 2)}	- 842	- 865	+ 23	- 2.7
Operating cash flow	4,297	4,736	- 439	- 9.3
Net financial debt	16,362	16,366	- 4	-
+ Present value operate leases	4,646	5,075	- 429	- 8.5
÷ Adjusted net financial debt	21,008	21,441	- 433	- 2.0
Redemption coverage (%)	20.5	22.1	-	-

¹⁾ To properly determine redemption coverage we utilize net operating interest by eliminating those components of net interest income/expense related to the compounding of non-current liabilities and provisions and the reversal of deferred income.

²⁾ Adjusted for special items.

	2013	2012	± absolute	± %
Gearing as of Dec 31 [€ million]				
Net financial debt	16,362	16,366	- 4	-
÷ Equity	14,912	14,978	- 66	- 0.4
Gearing (%)	110	109	-	-

	2013	2012	± absolute	± %
Net financial debt/EBITDA [€ million]				
Net financial debt	16,362	16,366	- 4	-
÷ EBITDA adjusted	5,139	5,601	- 462	- 8.2
Net financial debt/EBITDA (multiple)	3.2	2.9	-	-

CUSTOMER AND QUALITY



Punctuality [%]	2013	2012	2011
-----------------	------	------	------

RAIL PASSENGER TRANSPORT

Passenger transport in Germany	94.1	94.6	94.8
DB Bahn Long-Distance	73.9	79.1	80.0
DB Bahn Regional	94.6	94.9	95.1
Regional trains	92.5	93.3	93.2
S-Bahn (metro) d.c.	95.1	95.6	95.5
S-Bahn (metro) a.c.	97.6	96.9	98.0
DB Arriva (Denmark, Great Britain, the Netherlands, Poland, Sweden)	91.7	91.8	92.5

RAIL FREIGHT TRANSPORT

Punctuality (15 minutes) in Europe	68.3	69.9	68.0
------------------------------------	------	------	------



Product quality rail infrastructure in Germany [%]	2013	2012	2011
Total punctuality ¹⁾ in Germany	93.8	94.3	94.4
Facilities quality (mark)	3.03	3.05	3.06
Supply reliability	99.99	99.93	99.91

¹⁾ Non-Group and DB Group customers.



Customer satisfaction [SI] ¹⁾	2013	2012	2011
DB Bahn Long-Distance			
Long-distance transport	61	63	62
Night trains	72	71	70
Car trains	70	68	68
DB Bahn Regional rail	68	67	66
DB Bahn Regional bus	74	-	-
DB Arriva (bus and rail Great Britain)	83	84	83
DB Schenker Rail	63	63	62
DB Schenker Logistics	74	-	-
DB Netze Track	72	73	74
DB Netze Stations			
Stations (private customers)	67	69	68
Stations (TOC ²⁾ and transport authorities)	65	59	56
Tenants	74	73	74
DB Netze Energy	78	77	77
Traction current and diesel	77	75	-
Electricity and Gas Plus (internal customers)	75	-	-
Electricity and Gas Plus (external customers)	81	-	-

¹⁾ Satisfaction index.

²⁾ Train operating companies.

SOCIAL



Employees as of Dec 31 [FTE] ¹⁾	2013	2012	± absolute	± %
DB Bahn Long-Distance	16,564	15,947	+ 617	+ 3.9
DB Bahn Regional	36,878	36,959	- 81	- 0.2
DB Arriva	46,718	39,545	+7,173	+18.1
DB Schenker Rail	30,925	31,770	- 845	- 2.7
DB Schenker Logistics	64,051	64,199	- 148	- 0.2
DB Services	26,319	26,375	- 56	- 0.2
Other	10,687	10,250	+ 437	+ 4.3
DB ML Group	232,142	225,045	+ 7,097	+ 3.2
DB Netze Track	42,206	41,400	+ 806	+ 1.9
DB Netze Stations	4,835	4,797	+ 38	+ 0.8
DB Netze Energy	1,753	1,626	+127	+ 7.8
Other	14,717	14,640	+ 77	+ 0.5
DB Group	295,653	287,508	+ 8,145	+ 2.8
Civil servants assigned	29,356	31,642	- 2,286	- 7.2
thereof DB ML Group	15,577	16,825	- 1,248	- 7.4
Civil servants on sabbatical	3,632	3,560	+ 72	+ 2.0
thereof DB ML Group	2,071	2,034	+ 37	+ 1.8

¹⁾ FTE = Full-time employees; for better comparability part-time employees are converted into equivalent full-time employees in accordance with their share of the normal annual work time.



Employees as of Dec 31 [natural persons]	2013	2012	± absolute	± %
DB Bahn Long-Distance	17,621	16,963	+ 658	+ 3.9
DB Bahn Regional	38,496	38,551	- 55	- 0.1
DB Arriva	48,715	42,274	+ 6,441	+15.2
DB Schenker Rail	31,290	32,127	- 837	- 2.6
DB Schenker Logistics	66,795	67,005	- 210	- 0.3
DB Services	27,344	27,466	- 122	- 0.4
Other	11,693	11,143	+ 550	+ 4.9
DB ML Group	241,954	235,529	+ 6,425	+ 2.7
DB Netze Track	42,930	42,066	+ 864	+ 2.1
DB Netze Stations	5,095	5,046	+ 49	+ 1.0
DB Netze Energy	1,783	1,649	+134	+ 8.1
Other	15,157	15,057	+ 100	+ 0.7
DB Group	306,919	299,347	+ 7,572	+ 2.5
Part-time employees ¹⁾	20,229	18,934	+ 1,295	+ 6.8
thereof DB ML Group	16,866	15,816	+ 1,050	+ 6.6
Portion of part-time employees (%)	6.6	6.3	-	-
DB ML Group	7.0	6.7	-	-

¹⁾ Previous year's figure excluding DB Arriva and DB Schenker Logistics.

	2013	2012	± absolute	± %
DB2020 top targets				
Employer attractiveness (rank, Germany)	22	31	+9	-
Employee satisfaction ¹⁾	-	3.6	-	-

¹⁾ Scale from 1 (“completely disagree”) to 5 (“agree completely”).

	2013	2012	± absolute	± %
Employee loyalty in Germany as of Dec 31				
Turnover of staff ¹⁾ (%)	4.2	4.8	-	-
Average years of service (years) ²⁾	21	22	-1	-4.5
Average age of employees (years) ²⁾	46	46	-	-

¹⁾ Based on approximately 97 % of domestic employees.

²⁾ Previous year's figure: domestic excluding DB Schenker Logistics.

	2013	2012	± absolute	± %
Young talents in Germany as of Dec 31				
Trainees	10,361	10,019	+342	+3.4
thereof DB ML Group	7,392	7,256	+136	+1.9
new appointments	3,434	3,801	-367	-9.7
share of female trainees (%)	20.8	20.5	-	-
Dual degree students	1,083	987	+96	+9.7
Training ratio (%)	5.8	5.7	-	-
Management trainees ¹⁾	181	187	-6	-3.2
Interns ¹⁾	615	507	+108	+21.3
“Chance plus” interns	310	315	-5	-1.6
Share of young staff (trainees and dual degree students) with offer of employment ²⁾ (%)	95	94	-	-

¹⁾ Based on approximately 97 % of domestic employees.

	2013	2012	± absolute	± %
Workforce diversity as of Dec 31 [natural persons]				
Female employees	69,438	67,480	+1,958	+2.9
thereof DB ML Group	54,935	53,440	+1,495	+2.8
Share of female employees (%)	22.6	22.5	-	-
in Germany	22.5	22.1	-	-
Employees in parental leave ¹⁾	1,319	1,409	-90	-6.4
thereof women (%)	90.5	87.6	-	-
thereof men (%)	9.5	12.4	-	-
Share of physically disabled persons ²⁾	12,632	12,314	+318	+2.6

¹⁾ Germany excluding DB Schenker Logistics.

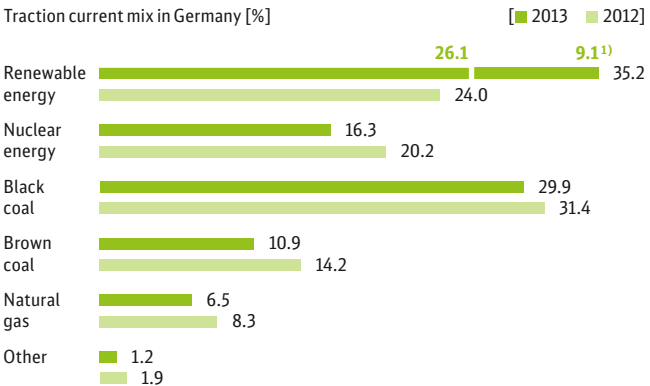
²⁾ Germany.

ENVIRONMENTAL



Selected key figures rail transport in Germany	2013	2012	± absolute	± %
Specific primary energy consumption rail passenger transport (MJ/pkm)	0.79	0.92	- 0.13	- 14.1
Specific primary energy consumption rail passenger transport (long-distance) (MJ/pkm)	0.48	0.68	- 0.20	- 29.4
Specific primary energy consumption rail passenger transport (local) (MJ/pkm)	1.06	1.12	- 0.06	- 5.4
Specific primary energy consumption rail freight transport (MJ/pkm)	0.37	0.37	-	-
Specific carbon dioxide consumption rail passenger transport (g/pkm)	43.3	53.2	- 9.9	- 18.6
Specific carbon dioxide consumption rail passenger transport (long-distance) (g/pkm)	19.8	39.7	- 19.9	- 50.1
Specific carbon dioxide consumption rail passenger transport (local) (g/pkm)	63.1	64.7	- 1.6	- 2.5
Specific carbon dioxide consumption rail freight transport (g/tkm)	21.9	21.9	-	-

Data for 2013 based on findings and estimates available as of February 13, 2014.



¹⁾ In addition procured electricity for green deals (excluding Umwelt-Plus and Eco Plus).

Data for 2013 based on findings and estimates available as of February 21, 2014 and is provisional.

DEVELOPMENT BY BUSINESS UNITS

	2013	2012	± absolute	± %
Total revenues [€ million]				
DB Bahn Long-Distance	4,083	4,074	+ 9	+ 0.2
DB Bahn Regional	8,839	8,908	- 69	- 0.8
DB Arriva	4,180	3,757	+ 423	+ 11.3
DB Schenker Rail	4,843	4,926	- 83	- 1.7
DB Schenker Logistics	14,857	15,389	- 532	- 3.5
DB Services	3,184	3,264	- 80	- 2.5
Other	903	927	- 24	- 2.6
Consolidation	- 2,901	- 2,964	+ 63	- 2.1
Reconciliation ¹⁾	-	- 469	+ 469	-
DBML Group	37,988	37,812	+ 176	+ 0.5
DB Netze Track	4,769	4,716	+ 53	+ 1.1
DB Netze Stations	1,119	1,102	+ 17	+ 1.5
DB Netze Energy	2,775	2,870	- 95	- 3.3
Other	793	720	+ 73	+ 10.1
Consolidation	- 8,325	- 8,168	- 157	+ 1.9
Reconciliation ¹⁾	-	244	- 244	-
DB Group	39,119	39,296	- 177	- 0.5

¹⁾ Reclassification of other operating income to revenues.

	2013	2012	± absolute	± %
EBITDA adjusted [€ million]				
DB Bahn Long-Distance	649	684	- 35	- 5.1
DB Bahn Regional	1,337	1,439	- 102	- 7.1
DB Arriva	467	425	+ 42	+ 9.9
DB Schenker Rail	352	389	- 37	- 9.5
DB Schenker Logistics	518	609	- 91	- 14.9
DB Services	211	253	- 42	- 16.6
Other/consolidation	- 257	- 258	+ 1	- 0.4
DBML Group	3,277	3,541	- 264	- 7.5
DB Netze Track	1,556	1,822	- 266	- 14.6
DB Netze Stations	363	359	+ 4	+ 1.1
DB Netze Energy	161	173	- 12	- 6.9
Other/consolidation	- 218	- 294	+ 76	- 25.9
DB Group	5,139	5,601	- 462	- 8.2





EBIT adjusted [€ million]	2013	2012	± absolute	± %
DB Bahn Long-Distance	323	364	- 41	- 11.3
DB Bahn Regional	777	882	- 105	- 11.9
DB Arriva	245	238	+ 7	+ 2.9
DB Schenker Rail	57	87	- 30	- 34.5
DB Schenker Logistics	335	418	- 83	- 19.9
DB Services	29	84	- 55	- 65.5
Other/consolidation	- 294	- 301	+ 7	- 2.3
DBML Group	1,472	1,772	- 300	- 16.9
DB Netze Track	665	894	- 229	- 25.6
DB Netze Stations	229	230	- 1	- 0.4
DB Netze Energy	71	91	- 20	- 22.0
Other/consolidation	- 201	- 279	+ 78	- 28.0
DB Group	2,236	2,708	- 472	- 17.4





Gross capital expenditures [€ million]	2013	2012	± absolute	± %
DB Bahn Long-Distance	168	173	- 5	- 2.9
DB Bahn Regional	908	709	+ 199	+ 28.1
DB Arriva	275	468	- 193	- 41.2
DB Schenker Rail	182	371	- 189	- 50.9
DB Schenker Logistics	335	321	+ 14	+ 4.4
DB Services	248	268	- 20	- 7.5
Other/consolidation	11	8	+ 3	+ 37.5
DBML Group	2,127	2,318	- 191	- 8.2
DB Netze Track	5,333	5,033	+ 300	+ 6.0
DB Netze Stations	617	552	+ 65	+ 11.8
DB Netze Energy	156	149	+ 7	+ 4.7
Other/consolidation	- 9	1	- 10	-
DB Group	8,224	8,053	+ 171	+ 2.1

DEVELOPMENT BY REGIONS

				
Total revenues [€ million]	2013	2012	± absolute	± %
Germany	22,667	22,967	- 300	-1.3
Europe (excluding Germany)	11,991	11,716	+275	+2.3
Asia/Pacific	2,449	2,753	-304	-11.0
North America	1,481	1,525	- 44	-2.9
Rest of world	531	560	-29	-5.2
Reconciliation ¹⁾	-	-225	+225	-
DB Group adjusted	39,119	39,296	-177	-0.5


				
Gross capital expenditures [€ million]	2013	2012	± absolute	± %
Germany	7,681	7,269	+ 412	+5.7
Europe (excluding Germany)	494	778	-284	-36.5
Asia/Pacific	67	47	+20	+42.6
North America	17	15	+2	+13.3
Rest of world	8	6	+2	+33.3
Consolidation	-43	-62	+19	-30.6
DB Group	8,224	8,053	+171	+2.1

				
Net capital expenditures [€ million]	2013	2012	± absolute	± %
Germany	2,872	2,703	+169	+6.3
Europe (excluding Germany)	491	778	-287	-36.9
Asia/Pacific	67	47	+20	+42.6
North America	17	15	+2	+13.3
Rest of world	8	6	+2	+33.3
Consolidation	-43	-62	+19	-30.6
DB Group	3,412	3,487	-75	-2.2

				
Employees as of Dec 31 [FTE]	2013	2012	± absolute	± %
Germany	187,837	186,222	+1,615	+0.9
Europe (excluding Germany)	84,228	77,205	+7,023	+9.1
Asia/Pacific	13,702	13,958	-256	-1.8
North America	7,326	7,592	-266	-3.5
Rest of world	2,560	2,531	+29	+1.1
DB Group	295,653	287,508	+8,145	+2.8

Figures by business units

OVERVIEW PASSENGER TRANSPORT

	2013	2012	± absolute	± %
PASSENGER TRANSPORT (RAIL AND BUS)				
Passenger (million)	4,355	4,120	+235	+5.7
Passengers per day (million)	11.9	11.3	+0.6	+5.3
RAIL PERFORMANCE FIGURES				
Passengers (million)	2,235	2,152	+83	+3.9
DB Bahn Long-Distance	130.9	131.3	-0.4	-0.3
DB Bahn Regional	1,882	1,840	+42	+2.3
DB Arriva	218.8	177.3	+41.5	+23.4
Other	3.5	3.5	-	-
Passengers in Germany (million)	2,016	1,974	+42	+2.1
Passengers per day (million)	6.12	5.90	+0.22	+3.7
DB Bahn Long-Distance	0.36	0.36	-	-
DB Bahn Regional	5.15	5.04	+0.11	+2.2
DB Arriva	0.60	0.49	+0.11	+22.4
Other	0.01	0.01	-	-
Volume sold (million pkm)	88,746	88,433	+313	+0.4
DB Bahn Long-Distance	36,777	37,357	-580	-1.6
DB Bahn Regional	43,568	43,357	+211	+0.5
DB Arriva	8,309	7,628	+681	+8.9
Other	91.7	91.6	+0.1	+0.1
Volume produced (million train-path km)	765.8	760.2	+5.6	+0.7
DB Bahn Long-Distance	142.6	145.1	-2.5	-1.7
DB Bahn Regional	487.7	496.8	-9.1	-1.8
DB Arriva	133.9	116.7	+17.2	+14.7
Other	1.6	1.6	-	-
Trains per day ¹⁾	25,193	25,295	-102	-0.4
DB Bahn Long-Distance	1,351	1,353	-2	-0.1
DB Bahn Regional	23,770	23,838	-68	-0.3
Other	72	104	-32	-30.8
BUS PERFORMANCE FIGURES				
Passengers (million)	2,120	1,968	+152	+7.7
Volume sold ¹⁾ (million pkm)	8,375	8,421	-46	-0.5
Volume produced (million bus km)	1,574	1,424	+150	+10.5

¹⁾ Excluding DB Arriva.

	2013	2012	± absolute	± %
ROLLING STOCK				
ICE fleet (number of trains)	253	253	-	-
Multiple units ¹⁾	4,503	4,390	+113	+2.6
S-Bahn (metro) d.c.	875	875	-	-
S-Bahn (metro) a.c.	772	767	+5	+0.7
Diesel multiple units	1,920	1,975	-55	-2.8
Rail buses	15	15	-	-
Electric multiple units	921	758	+163	+21.5
Locomotives	1,490	1,579	-89	-5.6
DB Bahn Long-Distance ²⁾	430	443	-13	-2.9
DB Bahn Regional	1,039	1,115	-76	-6.8
DB Arriva	19	19	-	-
Other	2	2	-	-
Passenger cars ³⁾	7,043	7,219	-176	-2.4
DB Bahn Long-Distance	2,871	3,006	-135	-4.5
DB Bahn Regional	4,076	4,122	-46	-1.1
DB Arriva	96	91	+5	+5.5
Seats	1,316,666	1,296,552	+20,114	+1.6
DB Bahn Long-Distance	204,524	208,007	-3,483	-1.7
DB Bahn Regional	990,512	969,870	+20,642	+2.1
DB Arriva	119,123	116,168	+2,955	+2.5
Other	2,507	2,507	-	-
BUS FLEET ⁴⁾				
Buses	29,824	26,015	+3,809	+14.6
DB Bahn Regional	13,696	13,429	+267	+2.0
DB Arriva	16,128	12,586	+3,542	+28.1
OTHER				
Automatic ticketing machines	7,297	7,232	+65	+0.9
DB Bahn Long-Distance	0	4	-4	-100
DB Bahn Regional	501	501	-	-
Combined ticketing machines	6,796	6,727	+69	+1.0
BahnCards as of Dec 31 (thousand)	4,967	4,942	+25	+0.5
BahnCard 100	42	41	+1	+2.4
BahnCard 50	1,480	1,560	-80	-5.1
BahnCard 25	3,445	3,341	+104	+3.1
Participants BahnBonus program as of Dec 31 (thousand)	3,308	3,288	+20	+0.6

1) Including ICE T, ICE TD and ICE 3 as well as rail buses.

2) Including ICE 1 and ICE 2 power cars.

3) Including ICE cars.

4) DB and externally owned stock.

DB BAHN LONG-DISTANCE

	2013	2012	± absolute	± %
FINANCIAL FIGURES				
Total revenues (€ million)	4,083	4,074	+9	+0.2
thereof external revenues	3,933	3,941	-8	-0.2
EBIT adjusted (€ million)	323	364	-41	-11.3
EBITDA adjusted (€ million)	649	684	-35	-5.1
Gross capital expenditures (€ million)	168	173	-5	-2.9
Employees as of Dec 31 (FTE)	16,564	15,947	+617	+3.9
PERFORMANCE FIGURES				
Passengers (million)	130.9	131.3	-0.4	-0.3
ICE	78.8	76.6	+2.2	+2.9
IC/EC	47.9	50.0	-2.1	-4.2
Other products	4.2	4.7	-0.5	-10.6
Passengers per day (million)	0.36	0.36	-	-
Volume sold (million pkm)	36,777	37,357	-580	-1.6
ICE	25,178	24,753	+425	+1.7
IC/EC	10,155	10,887	-732	-6.7
Other products	1,444	1,717	-273	-15.9
Volume produced (million train-path km)	142.6	145.1	-2.5	-1.7
Mean travel distance (km)	281.0	284.5	-3.5	-1.2
thereof ICE	319.5	323.1	-3.6	-1.1
thereof IC/EC	212.0	217.7	-5.7	-2.6
Load factor (%)	50.7	50.3	-	-
Trains per day	1,351	1,353	-2	-0.1
Passengers bus (million)	0.3	-	+0.3	-
Volume sold (million pkm)	110	-	+110	-
ROLLING STOCK				
Locomotives	266	279	-13	-4.7
Electric locomotives	228	230	-2	-0.9
Diesel locomotives	38	49	-11	-22.4
Passenger cars	1,854	1,989	-135	-6.8
IC/EC	1,367	1,442	-75	-5.2
Restaurant cars	148	150	-2	-1.3
Couchettes cars	139	142	-3	-2.1
Sleeping cars	42	81	-39	-48.1
Double-deck cars	33	15	+18	+120
Other (including baggage cars)	125	159	-34	-21.4

	2013	2012	± absolute	± %
ICE fleet (number of trains)	253	253	-	-
ICE1				
Number of trains	59	59	-	-
Power cars	118	118	-	-
Intermediate cars	708	708	-	-
1st class cars	195	195	-	-
2nd class cars	454	454	-	-
Restaurant cars	59	59	-	-
ICE2				
Number of trains	44	44	-	-
Power cars	46	46	-	-
Driving trailers	45	45	-	-
Intermediate cars	264	264	-	-
1st class cars	88	88	-	-
2nd class cars	132	132	-	-
Restaurant cars	44	44	-	-
ICE T				
Multiple units	67	67	-	-
Rail cars	260	260	-	-
End cars	136	136	-	-
Intermediate cars	56	56	-	-
ICE TD				
Multiple units	19	19	-	-
Rail cars	78	78	-	-
End cars	39	39	-	-
Intermediate cars	39	39	-	-
ICE3				
Multiple units	64	64	-	-
Rail cars	256	256	-	-
1st class cars	64	64	-	-
2nd class cars	192	192	-	-
Trailer cars	256	256	-	-
1st class cars	64	64	-	-
2nd class cars	128	128	-	-
Restaurant cars	64	64	-	-
Seats	204,524	208,007	-3,483	-1.7
1st class	43,523	43,635	-112	-0.3
2nd class	161,001	164,372	-3,371	-2.1

DB BAHN REGIONAL

	2013	2012	± absolute	± %
FINANCIAL FIGURES				
Total revenues (€ million)	8,839	8,908	- 69	- 0.8
thereof external revenues	8,734	8,820	- 86	-1.0
thereof concession fees	4,168	4,265	- 97	-2.3
EBIT adjusted (€ million)	777	882	-105	-11.9
EBITDA adjusted (€ million)	1,337	1,439	-102	-7.1
Gross capital expenditures (€ million)	908	709	+199	+28.1
Employees as of Dec 31 (FTE)	36,878	36,959	- 81	- 0.2
PERFORMANCE FIGURES (RAIL)				
Passengers (million)	1,882	1,840	+ 42	+2.3
Passengers per day (million)	5.2	5.0	+0.2	+4.0
Volume sold (million pkm)	43,568	43,357	+211	+0.5
Volume produced (million train-path km)	487.7	496.8	- 9.1	-1.8
Trains per day	23,770	23,838	- 68	- 0.3
Mean travel distance (km)	23.1	23.6	- 0.5	-2.1
ROLLING STOCK				
Locomotives	1,039	1,115	-76	- 6.8
Electric locomotives	884	955	-71	-7.4
Diesel locomotives	155	160	- 5	-3.1
Multiple units	3,654	3,584	+70	+2.0
S-Bahn (metro) d.c.	815	815	-	-
S-Bahn (metro) a.c.	772	767	+ 5	+0.7
Diesel multiple units	1,433	1,495	- 62	-4.1
Rail buses	6	6	-	-
Electric multiple units	628	501	+127	+25.3
Rail cars	9,899	9,525	+374	+3.9
S-Bahn (metro) d.c.	1,794	1,794	-	-
S-Bahn (metro) a.c.	2,935	2,906	+29	+1.0
Diesel rail cars	2,833	2,971	-138	-4.6
Rail buses	6	6	-	-
Electric rail cars	2,331	1,848	+483	+26.1
Coaches	4,076	4,122	- 46	-1.1
Double-deck cars	2,319	2,253	+ 66	+2.9
Other passenger cars (including baggage cars)	1,757	1,869	-112	-6.0
Seats	990,512	969,870	+20,642	+2.1
1st class	73,418	72,958	+460	+0.6
2nd class (including folding seats)	917,094	896,912	+20,182	+2.3



	2013	2012	± absolute	± %
PERFORMANCE FIGURES BUS				
Passengers (million)	706.2	725.2	-19.0	-2.6
Volume sold (million pkm)	8,265	8,421	-156	-1.9
Volume produced (million bus km)	598.2	609.6	-11.4	-1.9
BUS FLEET				
Buses	13,696	13,429	+267	+2.0
DB stock	4,852	4,810	+42	+0.9
Externally owned stock	8,844	8,619	+225	+2.6

DB ARRIVA



	2013	2012	± absolute	± %
FINANCIAL FIGURES				
Total revenues (€ million)	4,180	3,757	+423	+11.3
thereof external revenues	4,175	3,751	+424	+11.3
EBIT adjusted (€ million)	245	238	+7	+2.9
EBITDA adjusted (€ million)	467	425	+42	+9.9
Gross capital expenditures (€ million)	275	468	-193	-41.2
Employees as of Dec 31 (FTE)	46,718	39,545	+7,173	+18.1
PERFORMANCE FIGURES RAIL				
Passengers (million)	218.8	177.3	+41.5	+23.4
Passengers per day (million)	0.60	0.49	+0.11	+22.4
Volume sold (million pkm)	8,309	7,628	+681	+8.9
Volume produced (million train-path km)	133.9	116.7	+17.2	+14.7
ROLLING STOCK				
Locomotives (diesel)	19	19	-	-
Multiple units	711	666	+45	+6.8
S-Bahn (metro) d.c.	60	60	-	-
Diesel multiple units	445	438	+7	+1.6
Electric multiple units	162	126	+36	+28.6
Trams	44	42	+2	+4.8
Rail cars	1,931	1,809	+122	+6.7
S-Bahn (metro) d.c.	120	120	-	-
Diesel rail cars	1,213	1,211	+2	+0.2
Electric rail cars	554	426	+128	+30.0
Trams	44	52	-8	-15.4
Coaches	96	91	+5	+5.5
EC/IC	83	79	+4	+5.1
Restaurant cars	7	7	-	-
Other (including baggage cars)	6	5	+1	+20.0

	2013	2012	± absolute	± %
Seats	119,123	116,168	+2,955	+2.5
1st class	3,494	3,282	+212	+6.5
2nd class (including folding seats)	115,629	112,886	+2,743	+2.4
PERFORMANCE FIGURES BUS				
Passengers (million)	1,413	1,243	+170	+13.7
Volume produced (million bus km)	975.2	814.3	+160.9	+19.8
BUS FLEET				
Buses	16,128	12,586	+3,542	+28.1
DB stock	15,540	12,272	+3,268	+26.6
Externally owned stock	588	314	+274	+87.3

DB SCHENKER RAIL

	2013	2012	± absolute	± %
FINANCIAL FIGURES				
Total revenues (€ million)	4,843	4,926	-83	-1.7
thereof external revenues	4,495	4,597	-102	-2.2
EBIT adjusted (€ million)	57	87	-30	-34.5
EBITDA adjusted (€ million)	352	389	-37	-9.5
Gross capital expenditures (€ million)	182	371	-189	-50.9
Employees as of Dec 31 (FTE)	30,925	31,770	-845	-2.7
PERFORMANCE FIGURES				
Freight carried (million t)	390.1	398.7	-8.6	-2.2
thereof in Germany	229.5	247.2	-17.7	-7.2
Volume sold (million tkm)	104,259	105,894	-1,635	-1.5
thereof in Germany	75,247	78,542	-3,295	-4.2
Volume produced (million train-path km)	196.0	203.1	-7.1	-3.5
Trains per day	4,891	5,034	-143	-2.8
Mean transport distance	267.3	265.6	+1.7	+0.6
Capacity utilization (t per train)	531.9	521.4	+10.5	+2.0
ROLLING STOCK				
Locomotives	3,067	2,913	+154	+5.3
Electric locomotives	1,284	1,244	+40	+3.2
Diesel locomotives	1,783	1,669	+114	+6.8

	2013	2012	± absolute	± %
Wagons	91,930	101,306	- 9,376	- 9.3
thereof in Germany equipped with K-/LL-brake shoes ("whisper brakes")	8,408	7,624	+784	+10.3
DB stock	83,574	89,082	- 5,508	- 6.2
Covered wagons	16,869	17,684	- 815	- 4.6
Open wagons	27,873	34,029	- 6,156	-18.1
Flat wagons	37,639	35,916	+1,723	+ 4.8
Tank wagons	1,193	1,453	- 260	-17.9
Leased wagons	3,522	4,149	- 627	-15.1
Rented from third parties	8,737	8,808	- 71	- 0.8
Rented to third parties (-)	3,903	733	+ 3,170	-
Transport capacity of freight wagons (thousand t)	5,514	6,038	- 524	- 8.7
DB stock	5,085	5,318	- 233	- 4.4
Covered wagons	780	796	- 16	- 2.0
Open wagons	1,729	2,144	- 415	-19.4
Flat wagons	2,534	2,334	+ 200	+ 8.6
Tank wagons	42	44	- 2	- 4.5
Leased wagons	250	248	+ 2	+ 0.8
Rented from third parties	636	574	+ 62	+10.8
Rented to third parties (-)	457	102	+ 355	-

DB SCHENKER LOGISTICS

	2013	2012	± absolute	± %
FINANCIAL FIGURES				
Total revenues (€ million)	14,857	15,389	- 532	- 3.5
thereof external revenues	14,814	15,335	- 521	- 3.4
thereof European land transport	6,370	6,415	- 45	- 0.7
thereof air and ocean freight	6,647	7,227	- 580	- 8.0
thereof contract logistics	1,841	1,750	+ 91	+ 5.2
EBIT adjusted (€ million)	335	418	- 83	- 19.9
EBITDA adjusted (€ million)	518	609	- 91	- 14.9
Gross capital expenditures (€ million)	335	321	+ 14	+ 4.4
Employees as of Dec 31 (FTE)	64,051	64,199	- 148	- 0.2
PERFORMANCE FIGURES				
Shipments in European land transport (thousand)	95,543	95,325	+ 218	+ 0.2
Air freight volume (export) (thousand t)	1,092	1,095	- 3	- 0.3
Ocean freight volume (export) (thousand TEU)	1,891	1,905	- 14	- 0.7

DB SERVICES

	2013	2012	± absolute	± %
FINANCIAL FIGURES				
Total revenues (€ million)	3,184	3,264	- 80	- 2.5
thereof external revenues	283	286	- 3	- 1.0
EBIT adjusted (€ million)	29	84	- 55	- 65.5
EBITDA adjusted (€ million)	211	253	- 42	- 16.6
Gross capital expenditures (€ million)	248	268	- 20	- 7.5
Employees as of Dec 31 (FTE)	26,319	26,375	- 56	- 0.2
VEHICLE FLEET				
Automobiles¹⁾	25,212	25,525	- 313	- 1.2
Automobiles (fleet management)²⁾	800	766	+ 34	+ 4.4
Automobiles (carsharing)	3,861	3,109	+ 752	+ 24.2
thereof DB stock	1,282	1,267	+ 15	+ 1.2
Carsharing presence (cities)	270	180	+ 90	+ 50.0
Call a Bike (bikes)	9,071	8,919	+ 152	+ 1.7
thereof e-Call a Bike	132	131	+ 1	+ 0.8
Call a Bike presence (cities)	51	48	+ 3	+ 6.3

¹⁾ Excluding German army fleet management, Swiss Mobility Solutions, Carsharing and Fleet Management.

²⁾ Excluding German army fleet management, Swiss Mobility Solutions, Carsharing.

DB NETZE TRACK

	2013	2012	± absolute	± %
FINANCIAL FIGURES				
Total revenues (€ million)	4,769	4,716	+ 53	+ 1.1
thereof external revenues	1,024	981	+ 43	+ 4.4
EBIT adjusted (€ million)	665	894	- 229	- 25.6
EBITDA adjusted (€ million)	1,556	1,822	- 266	- 14.6
Gross capital expenditures (€ million)	5,333	5,033	+ 300	+ 6.0
Employees as of Dec 31 (FTE)	42,206	41,400	+ 806	+ 1.9
PERFORMANCE FIGURES				
Train kilometers on track infrastructure (million train-path km)	1,035	1,039	- 4	- 0.4
thereof non-Group customers	247.4	230.6	+ 16.8	+ 7.3
thereof DB Netze Track	1,033	1,038	- 5	- 0.5

	2013	2012	± absolute	± %
INFRASTRUCTURE ¹⁾				
Length of line operated (km)	33,448	33,505	- 57	- 0.2
thereof electrified	19,876	19,830	+ 46	+ 0.2
thereof DB Netze Track	33,295	33,319	- 24	- 0.1
Standard gauge	33,288	33,313	- 25	- 0.1
Narrow gauge	7	6	+ 1	+ 16,7
Length of all track (km)	61,477	61,610	- 133	- 0.2
thereof DB Netze Track	61,153	61,260	- 107	- 0.2
Noise protection walls (km)	1,272	1,187	+ 85	+ 7.2
Switches and crossings	70,031	70,630	- 599	- 0.8
thereof DB Netze Track	69,400	69,983	- 583	- 0.8
Stations	3,245	3,245	-	-
thereof DB Netze Track	3,223	3,223	-	-
Stopping points	2,891	2,854	+ 37	+ 1.3
thereof DB Netze Track	2,873	2,836	+ 37	+ 1.3
Interlockings	3,261	3,397	- 136	- 4.0
thereof electronic	407	415	- 8	- 1.9
thereof DB Netze Track	3,256	3,392	- 136	- 4.0
thereof electronic	407	415	- 8	- 1.9
Level crossings	14,004	14,190	- 186	- 1.3
thereof technically protected	9,780	9,845	- 65	- 0.7
thereof DB Netze Track	13,890	14,062	- 172	- 1.2
thereof technically protected	9,720	9,782	- 62	- 0.6
Tunnels	695	692	+ 3	+ 0.4
Subterranean	553	543	+ 10	+ 1.8
Above ground	142	149	- 7	- 4.7
Total length (km)	512.1	492.3	+ 19.8	+ 4.0
Length of longest tunnel (m)	10,779	10,779	-	-
Railway bridges	25,007	24,977	+ 30	+ 0.1
thereof DB Netze Track	24,982	24,937	+ 45	+ 0.2
Private sidings	2,395	2,374	+ 21	+ 0.9

¹⁾ Including Infra Silesia S.A. and UBB Usedomer Bäderbahn GmbH.

DB NETZE STATIONS

	2013	2012	± absolute	± %
FINANCIAL FIGURES				
Total revenues (€ million)	1,119	1,102	+17	+1.5
thereof external revenues	428	416	+12	+2.9
EBIT adjusted (€ million)	229	230	-1	-0.4
EBITDA adjusted (€ million)	363	359	+4	+1.1
Gross capital expenditures (€ million)	617	552	+65	+11.8
Employees as of Dec 31 (FTE)	4,835	4,797	+38	+0.8
PERFORMANCE FIGURES				
Station stops (million)	146.2	146.4	-0.2	-0.1
thereof non-Group customers	27.2	26.6	+0.6	+2.3
DB Netze Stations	143.2	143.4	-0.2	-0.1
Other ¹⁾	3.0	3.0	-	-
INFRASTRUCTURE				
Passenger stations	5,668	5,645	+23	+0.4
DB Netze Stations	5,373	5,350	+23	+0.4
Other ¹⁾	295	295	-	-

¹⁾ DB RegioNetz Infrastruktur GmbH and UBB Usedomer Bäderbahn GmbH.

DB NETZE ENERGY

	2013	2012	± absolute	± %
FINANCIAL FIGURES				
Total revenues (€ million)	2,775	2,870	-95	-3.3
thereof external revenues	928	1,080	-152	-14.1
EBIT adjusted (€ million)	71	91	-20	-22.0
EBITDA adjusted (€ million)	161	173	-12	-6.9
Gross capital expenditures (€ million)	156	149	+7	+4.7
Employees as of Dec 31 (FTE)	1,753	1,626	+127	+7.8
PERFORMANCE FIGURES				
Traction power (16.7 Hz and direct current) (GWh)	10,194	10,403	-209	-2.0
Stationary energy (50 Hz and 16.7 Hz) (GWh)	3,533	5,319	-1,786	-33.6
Diesel fuel (million l)	459.0	469.8	-10.8	-2.3
INFRASTRUCTURE				
Traction supply system (km)	7,888	7,807	+81	+1.0
Power, converter and transformer stations	53	54	-1	-1.9
Transformer substations	185	184	+1	+0.5
Rectifiers	113	26	+87	-
Gas stations	194	196	-2	-1.0
Mean voltage networks with transformer stations	188	193	-5	-2.6
Train preheating plants	302	314	-12	-3.8

10-year summaries

RAIL PERFORMANCE FIGURES



	2013	2012	2011	2010
PASSENGER TRANSPORT				
Passengers (million)	2,235	2,152	1,981	1,950
Long-distance transport (DB Bahn Long-Distance)	131	131	125	126
Regional and urban transport (DB Bahn Regional and other)	1,885	1,844	1,801	1,824
Regional and urban transport (DB Arriva)	219	178	55	-
Volume sold (million pkm)	88,746	88,433	79,228	78,582
Long-distance transport (DB Bahn Long-Distance)	36,777	37,357	35,565	36,026
Regional and urban transport (DB Bahn Regional and other)	43,660	43,448	42,404	42,556
Regional and urban transport (DB Arriva)	8,309	7,628	1,259	-
FREIGHT TRANSPORT				
Freight carried (million t)	390.1	398.7	411.6	415.4
Volume sold (million tkm)	104,259	105,894	111,980	105,794
INFRASTRUCTURE				
Train kilometers on track infrastructure (million train-path km)	1,035	1,039	1,051	1,034
thereof non-Group customers	247	231	220	195

EMPLOYEES



[FTE]	2013	2012	2011	2010
Average	293,765	286,237	282,260	251,810
At year end	295,653	287,508	284,319	276,310

	2009	2008	2007	2006	2005	2004
	1,908	1,920	1,835	1,854	1,785	1,695
	123	123	119	120	119	115
	1,785	1,797	1,717	1,735	1,667	1,580
	-	-	-	-	-	-
	76,772	77,812	74,792	74,788	72,554	70,260
	34,708	35,457	34,137	34,458	33,641	32,330
	42,064	42,355	40,654	40,331	38,913	37,930
	-	-	-	-	-	-
	341.0	378.7	312.8	307.6	274.6	295.3
	93,948	113,634	98,794	96,388	88,022	89,494
	1,003	1,043	1,050	1,016	998	1,001
	170	162	147	128	110	88
	2009	2008	2007	2006	2005	2004
	239,888	240,008	231,356	228,990	220,343	229,830
	239,382	240,242	237,078	229,200	216,389	225,632

STATEMENT OF INCOME


	2013	2012	2011	2010
[€ million]				
Revenues	39,107	39,296	37,979	34,410
Inventory changes and internally produced and capitalized assets	2,649	2,614	2,457	2,207
Overall performance	41,756	41,910	40,436	36,617
Other operating income	2,853	3,443	3,062	3,120
Cost of materials	-20,414	-20,960	-20,906	-19,314
Personnel expenses	-14,383	-13,817	-13,076	-11,602
Depreciation	-3,228	-3,328	-2,964	-2,912
Other operating expenses	-4,817	-4,719	-4,375	-4,092
Operating profit (EBIT)	1,767	2,529	2,177	1,817
Result from investments accounted for using the equity method	3	14	19	17
Net interest income	-879	-1,005	-840	-911
Other financial result	-15	-13	3	-23
Financial result	-891	-1,004	-818	-917
Profit before taxes on income	876	1,525	1,359	900
Taxes on income	-227	-66	-27	158
Net profit for the year	649	1,459	1,332	1,058

OPERATING PROFIT FIGURES/VALUE MANAGEMENT


	2013	2012	2011	2010
[€ million]				
EBITDA adjusted	5,139	5,601	5,141	4,651
EBIT adjusted	2,236	2,708	2,309	1,866
Capital employed as of Dec 31	33,086	32,642	31,732	31,312
Return on capital employed (ROCE) (%)	6.8	8.3	7.3	6.0
Redemption coverage (%)	20.5	22.1	20.5	18.1
Gearing (%)	110	109	110	118
Net financial debt/EBITDA (multiple)	3.2	2.9	3.2	3.6

	2009	2008	2007	2006	2005	2004
	29,335	33,452	31,309	30,053	25,055	23,962
	1,936	1,872	1,945	1,890	1,673	1,928
	31,271	35,324	33,254	31,943	26,728	25,890
	3,864	3,046	3,219	2,859	2,366	2,860
	-15,627	-18,544	-17,166	-16,449	-12,650	-12,054
	-11,115	-10,583	-9,913	-9,782	-9,211	-9,556
	-2,825	-2,723	-2,795	-2,950	-2,801	-2,722
	-3,360	-3,927	-3,704	-3,144	-3,080	-3,274
	2,208	2,593	2,895	2,477	1,352	1,144
	9	21	32	18	76	49
	-826	-760	-908	-941	-945	-984
	-4	-47	-3	1	7	-55
	-821	-786	-879	-922	-862	-990
	1,387	1,807	2,016	1,555	490	154
	-557	-486	-300	125	121	26
	830	1,321	1,716	1,680	611	180
	2009	2008	2007	2006	2005	2004
	4,402	5,206	5,113	-	-	-
	1,685	2,483	2,370	2,143	1,350	1,011
	28,596	27,961	27,393	28,693	27,013	26,490
	5.9	8.9	8.7	7.5	5.0	3.8
	19.4	22.5	21.1	18.6	14.7	12.7
	115	131	151	213	256	276
	3.4	3.1	3.2	3.9	-	-

CASH FLOW/CAPITAL EXPENDITURES

 [€ million]	2013	2012	2011	2010
Cash flow from operating activities	3,730	4,094	3,390	3,409
Gross capital expenditures	8,224	8,053	7,501	6,891
Net capital expenditures	3,412	3,487	2,569	2,072

BALANCE SHEET

 [€ million]	2013	2012	2011	2010
Non-current assets	43,949	44,241	44,059	44,530
thereof property, plant and equipment and intangible assets	41,811	41,816	41,541	42,027
thereof deferred tax assets	1,404	1,548	1,461	1,471
Current assets	8,945	8,284	7,732	7,473
thereof cash and cash equivalents	2,861	2,175	1,703	1,475
Equity	14,912	14,978	15,126	14,316
Equity ratio (%)	28.2	28.5	29.2	27.5
Non-current liabilities	26,284	25,599	24,238	24,762
thereof financial debt	18,066	17,110	16,367	16,394
thereof retirement benefit obligations	3,164	3,074	1,981	1,938
Current liabilities	11,698	11,948	12,427	12,925
thereof financial debt	1,247	1,503	1,984	2,159
Net financial debt	16,362	16,366	16,592	16,939
Total assets	52,894	52,525	51,791	52,003

	2009	2008	2007	2006	2005	2004
	3,133	3,539	3,364	3,678	2,652	2,736
	6,462	6,765	6,320	6,584	6,381	7,238
	1,813	2,599	2,060	2,836	2,362	3,251
	2009	2008	2007	2006	2005	2004
	41,308	42,353	42,046	43,360	42,907	43,200
	39,509	39,976	39,855	41,081	40,430	40,861
	1,173	1,692	1,644	1,800	1,556	1,301
	5,995	5,840	6,483	5,080	4,194	4,416
	1,470	879	1,549	295	305	765
	13,066	12,155	10,953	9,214	7,675	7,067
	27.6	25.2	22.6	19.0	16.3	14.8
	23,359	23,161	25,612	26,319	27,963	29,440
	14,730	14,083	16,228	17,165	18,310	19,045
	1,736	1,649	1,594	1,514	1,414	1,341
	10,878	12,877	11,964	12,907	11,463	11,109
	1,780	2,770	1,834	2,716	1,664	1,231
	15,011	15,943	16,513	19,586	19,669	19,511
	47,303	48,193	48,529	48,440	47,101	47,616

Contact addresses

INVESTOR RELATIONS

ROBERT ALLEN STREHL

Head of Investor Relations
Tel. +49-30-297-64030
robert.strehl@
deutschebahn.com

SASCHA FRIEDRICH

Senior Manager
Investor Relations
Tel. +49-30-297-64032
sascha.friedrich@
deutschebahn.com

FRIEDERIKE THYSSEN

Manager
Investor Relations
Tel. +49-30-297-64033
friederike.thyssen@
deutschebahn.com

KATHARINA POSTMA

Junior Manager
Investor Relations
Tel. +49-30-297-64387
katharina.postma@
deutschebahn.com

DEUTSCHE BAHN AG/**DB MOBILITY LOGISTICS AG**

Investor Relations
Europaplatz 1
10557 Berlin, Germany
Tel. +49-30-297-64031
Fax +49-69-265-20110
ir@deutschebahn.com
www.db.de/ir
www.db.de/ir-dbml

COMMUNICATIONS

Group contacts**OLIVER SCHUMACHER**

Head of Communications
Tel. +49-30-297-61480
Fax +49-30-297-61485
oliver.schumacher@
deutschebahn.com

REINHARD BOECKH

Head of and spokesperson
Corporate Press Information Office
Tel. +49-30-297-61180
Fax +49-30-297-61919
reinhard.boeckh@
deutschebahn.com

HARTMUT SOMMER

Head of and spokesperson
Technology
Tel. +49-30-297-62109
Fax +49-30-297-61919
hartmut.sommer@
deutschebahn.com

DAGMAR KAISER

Head of and spokesperson
Human Resources
Tel. +49-30-297-61196
Fax +49-30-297-61195
dagmar.d.kaiser@
deutschebahn.com

ANTJE NEUBAUER

Head of PR and Internal
Communications
Tel. +49-30-297-61610
Fax +49-30-297-61191
antje.neubauer@
deutschebahn.com

JENS-OLIVER VOSS

Head of and spokesperson
Compliance, Privacy,
Legal and Corporate Security
Tel. +49-30-297-61140
Fax +49-30-297-61919
jens-oliver.voss@
deutschebahn.com

CENTRAL PRESS**STANDBY TEAM**

Potsdamer Platz 2
10785 Berlin, Germany
Tel. +49-30-297-61030
Fax +49-30-297-61919
presse@deutschebahn.com
www.db.de/en/press

***Passenger Transport,
Transport and Logistics
and Infrastructure*****JÜRGEN KORNMANN**

Head of and spokesperson
Passenger Transport
DB Mobility Logistics AG
Potsdamer Platz 2
10785 Berlin, Germany
Tel. +49-30-297-60010
Fax +49-30-297-60012
juergen.kornmann@
deutschebahn.com

BERND WEILER

Head of and spokesperson
Transport and Logistics,
International
DB Mobility Logistics AG
Potsdamer Platz 2
10785 Berlin, Germany
Tel. +49-30-297-54020
Fax +49-30-297-54029
bernd.weiler@
dbschenker.com

MARTIN WALDEN

Head of and spokesperson
Infrastructure, Services
and Railway Technology
Deutsche Bahn AG
Potsdamer Platz 2
10785 Berlin, Germany
Tel. +49-30-297-62720
Fax +49-30-297-61715
martin.walden@
deutschebahn.com

Press spokespersons in the regions

BADEN-WÜRTTEMBERG

Martin Schmolke

Head of and spokesperson
DB Mobility Logistics AG
Presselstraße 17
70191 Stuttgart, Germany
Tel. +49-711-2092-2300
Fax +49-711-2092-3303
presse.s@deutschebahn.com

BAVARIA

Franz Lindemair

Head of and spokesperson
DB Mobility Logistics AG
Richelstraße 3
80634 Munich, Germany
Tel. +49-89-1308-1498
Fax +49-89-1308-1901
presse.m@deutschebahn.com

BERLIN, BRANDENBURG,

MECKLENBURG-WEST

POMERANIA

Burkhard Ahlert

Head of and spokesperson
DB Mobility Logistics AG
Caroline-Michaelis-Straße 5-11
10115 Berlin, Germany
Tel. +49-30-297-58200
Fax +49-30-297-58206
presse.b@deutschebahn.com

HESSE, RHINELAND-PALATINATE, SAARLAND

Torsten Sälinger

Head of and spokesperson
DB Mobility Logistics AG
Weilburger Straße 22
60326 Frankfurt am Main, Germany
Tel. +49-69-2652-4911
Fax +49-69-2652-4915
presse.f@deutschebahn.com

LOWER SAXONY, SCHLESWIG-HOLSTEIN, HAMBURG, BREMEN

Egbert Meyer-Lovis

Head of and spokesperson
DB Mobility Logistics AG
Hammerbrookstraße 44
20097 Hamburg, Germany
Tel. +49-40-3918-4498
Fax +49-69-2653-6531
presse.h@deutschebahn.com

NORTH RHINE-WESTPHALIA

Andrea Brandt

Head of and spokesperson
DB Mobility Logistics AG
Willi-Becker-Allee 11
40227 Düsseldorf, Germany
Tel. +49-211-3680-2060
Fax +49-211-3680-2090
presse.d@deutschebahn.com

SAXONY, SAXONY-ANHALT, THURINGIA

DB Mobility Logistics AG
Dohnanyistraße 11
04103 Leipzig, Germany
Tel. +49-341-9678-480
Fax +49-341-9678-489
presse.l@deutschebahn.com

MANAGEMENT REPRESENTATIVES FOR THE FEDERAL STATES

BADEN-WÜRTTEMBERG

Eckhart Fricke

Presselstraße 17,
70191 Stuttgart, Germany
Tel. +49-711-2092-3300
Fax +49-711-2092-3600

BAVARIA

Klaus-Dieter Josel
Richelstraße 3,
80634 Munich, Germany
Tel. +49-89-1308-3300
Fax +49-89-1308-1911

BERLIN

Ingulf Leuschel
Potsdamer Platz 2,
10785 Berlin, Germany
Tel. +49-30-297-61010
Fax +49-30-297-61911

BRANDENBURG

Dr.-Ing. Joachim Trettin
Babelsberger Straße 18
14473 Potsdam, Germany
Tel. +49-331-235-6800
Fax +49-331-235-6819

HAMBURG, SCHLESWIG-HOLSTEIN

Manuela Herbolt
Hammerbrookstraße 44
20097 Hamburg, Germany
Tel. +49-40-3918-3000
Fax +49-40-3918-3006

HESSE

Dr. Klaus Vornhusen
Weilburger Straße 22
60326 Frankfurt am Main, Germany
Tel. +49-69-2652-4700
Fax +49-69-2652-4709

MECKLENBURG-WEST**POMERANIA**

Dr.-Ing. Joachim Trettin
Grunthalplatz 4,
19053 Schwerin, Germany
Tel. +49-385-750-3300
Fax +49-385-750-3349

LOWER SAXONY, BREMEN

Ulrich Bischoping
Joachimstraße 8
30159 Hanover, Germany
Tel. +49-511-286-3300
Fax +49-69-2655-5721

NORTH RHINE-WESTPHALIA

Reiner Latsch
Willi-Becker-Allee 11
40227 Düsseldorf, Germany
Tel. +49-211-3680-2000
Fax +49-211-3680-2050

**RHINELAND-PALATINATE,
SAARLAND**

Jürgen Konz
Am Hauptbahnhof 4
66111 Saarbrücken, Germany
Tel. +49-681-308-3300
Fax +49-681-308-3301

SAXONY

Artur Stempel
Brandenburger Straße 3a
04103 Leipzig, Germany
Tel. +49-341-968-3300
Fax +49-341-968-3301

SAXONY-ANHALT,

Alexander Kaczmarek
Bahnhofstraße 69
39104 Magdeburg, Germany
Tel. +49-391-549-3300
Fax +49-391-549-3233

THÜRINGEN

Volker Hädrich
Bahnhofstraße 23
99084 Erfurt, Germany
Tel. +49-361-300-3300
Fax +49-361-300-4438

SERVICE NUMBERS

DB service numbers

+49-1806-99 66 33

Our service number gives you direct access to all of our telephone services. The access includes information regarding general information, booking of train tickets, finding train times, our customer dialogue and our frequent traveler system (BahnCard).

Calls will be charged as follows: calls from the German fixed-line network cost 20 ct/min. Charges from the German cell phone network cost 60 ct / min at most.

Automatic train schedule information

Free train schedule information is available 24 hours a day to callers using the German fixed-line network on +49-8001-50 70 90. Information is provided by our voice dialogue system.

Actual information is also available at www.bahn.de/abfahrtstafel.

Lost and found hotline

PHONE

+49-900-1 99 05 99

(Note: charges are 59 ct per minute for callers from the German fixed-line network; charges may vary for calls from German cell phone networks).

E-MAIL

fundbuero.dbag@deutschebahn.com

INTERNET

www.fundservice.bahn.de

FINANCIAL CALENDAR

July 24, 2014

Interim Results Press Conference,
Publication of the Interim Report
January–June 2014

March 19, 2015

Annual Results Press Conference,
Publication of 2014 Integrated Report



Annual Report
online



Investor Relations
online



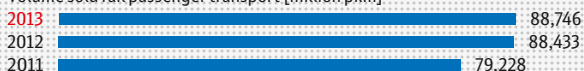
IMPRINT

□ **Concept, editing** Deutsche Bahn AG, Investor Relations □ **Design concept, typesetting** Studio Delhi, Mainz □ **Proofreading** AdverTEXT, Düsseldorf □ **Lithography** Koch Lichtsatz und Scan, Wiesbaden □ **Printing** ColorDruck Solutions, Leimen □ **Photography** Max Lautenschläger, Berlin

Performance figures



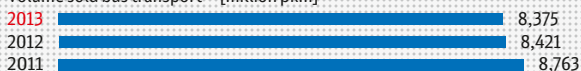
Volume sold rail passenger transport [million pkm]



↗ 2013 vs. 2012: + 0.4%



Volume sold bus transport¹⁾ [million pkm]



↘ 2013 vs. 2012: - 0.5%



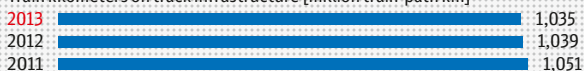
Volume sold rail freight transport [million tkm]



↘ 2013 vs. 2012: - 1.5%



Train kilometers on track infrastructure [million train-path km]



↘ 2013 vs. 2012: - 0.4%



Station stops [million]



↘ 2013 vs. 2012: - 0.1%



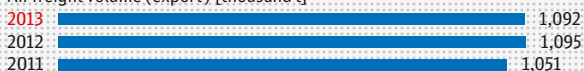
Shipments in European land transport [thousand]



↗ 2013 vs. 2012: + 0.2%



Air freight volume (export) [thousand t]



↘ 2013 vs. 2012: - 0.3%



Ocean freight volume (export) [thousand TEU]



↘ 2013 vs. 2012: - 0.7%

¹⁾ Excluding DB Arriva.

Deutsche Bahn AG
DB Mobility Logistics AG
Potsdamer Platz 2
10785 Berlin
Germany

www.deutschebahn.com
www.deutschebahn.com/dbml

