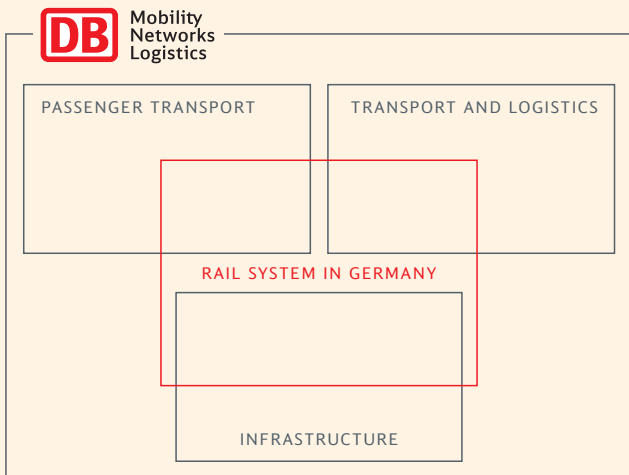




Deutsche Bahn
DB Mobility Logistics
Facts & Figures 2008

DB GROUP'S BUSINESS APPROACH



DB'S MISSION STATEMENT ON TRACK FOR TOMORROW

1/2

WHO ARE WE?

We are a leading mobility and logistics company.

- /// WE HAVE successfully modernized our company and positioned it for a promising future.
- /// WE TRANSPORT people and goods in end-to-end mobility and logistics chains.
- /// WE CONTINUOUSLY DEVELOP mobility and logistics solutions – locally, nationally and globally – as an integrated company with our strong railway at its core.
- /// WE STRUCTURE and operate the transport networks of the future – on land, sea and in the air.

You will find the second part of our mission statement on the inside back cover.



HARTMUT MEHDORN

CEO and Chairman
of the Management Board
of Deutsche Bahn AG

Dear ladies and gentlemen,

The 2008 financial year was once again a good year for Deutsche Bahn Group. We were still able to further increase our revenues and our profits over the figures noted for the record-breaking 2007 financial year, despite operating in a market environment marked by very volatile energy prices and, starting in the fall, by deep uncertainty caused by the crisis in the financial markets. DB Group revenues rose by about 7 percent to € 33.5 billion, while adjusted EBIT increased by about 5 percent to € 2.5 billion. Furthermore, our good business results enabled us to make key strategic acquisitions and further reduce our net debt.

Following the decisions taken by the Federal Government and the German Parliament (Bundestag) in early summer regarding the partial privatization we completed preparations for the initial public offering (IPO) of DB Mobility Logistics AG shares within a few months. However, due to dramatic developments on the world's stock markets,

we decided at short notice to postpone the IPO on the Frankfurt Stock Exchange that was originally planned for October 27.

Our good results were powered by more customers than ever before. A total of 2.7 billion people decided to use our environmentally friendly modes of transport during the year under review. This means an average of more than 7 million passengers traveled via our trains and buses every day. We noted particularly strong results in the long-distance passenger transport sector where we increased our volume sold by almost 4 percent. Our freight transport business was hit especially hard by the effects of the global economic crisis, and we were unable to fully attain the very high level of results we achieved last year. Rail transport continued to shoulder an unfair burden of taxes and emissions trading effects which are not carried to the same extent by the road transport segment.

In the interim, the rapid increase in energy prices embodied the warning contained in the most recent report released last year by the Intergovernmental Panel on Climate Change: we will only be able to sustain our mobility over the long term if it becomes more energy efficient. As one of the biggest consumers of energy in Germany we are working intensively on measures to further reduce our consumption of energy. These measures include the development of environmentally friendlier technologies and processes, along with better utilization of our capacities. Last year we were able to increase the capacity utilization rates of our trains by using scheduling measures, special promotional offers and new BahnCard products – and at the same time we also further reduced our specific CO₂ emissions.

Sustainable and economically efficient mobility, however, requires more than rail transport. All modes of transport have to be involved. For this reason we are successfully focused on offering intelligent mobility and transport chains around the world that enable us to optimally utilize the particular strengths of each participating mode of transport. We achieve this goal by expanding, optimizing and linking our transport networks. In contrast to our competitors, we benefit decisively by being the only company in our industry that not only operates its own

networks across all modes of transport, we can also link them together. This capability makes us a robust competitor – even in the crisis.

During the year under review we made important strategic advances. The acquisition of Laing Rail, a British railway, enabled us to enter one of the biggest rail passenger transport markets outside of Germany. And with the TransEurasia-Express DB proved that it was technically possible to link Hamburg harbor to the economic zones in China by rail. As soon as the global economy has recovered, the TransEurasia-Express will allow us to make an attractive offer that complements air and ocean freight services. We expanded our rail freight transport network, which is currently already the biggest in Europe, by making new collaborative agreements and acquisitions in northern Italy, Denmark, Switzerland and Poland. Our logistics activities were enhanced by DB Schenker's acquisition of Romtrans, the biggest freight forwarder in Romania, in December 2008. This move significantly strengthened our presence in Southeastern Europe.

The optimization of our networks also includes the modernization and expansion of our rail network in Germany. Our future-oriented program Pro Track (ProNetz) has made a decisive contribution towards today's reduced level of defect-related, restricted speed zones in the track network. Despite the daily presence of about 600 track-related construction sites, this program has enabled us to further improve punctuality. In addition, the infrastructure-related business units were able to further improve their results during the year under review.

The conclusion of the Service and Financing Agreement between DB AG and the Federal Government in December 2008 after long negotiations marked an important step forward for us. The agreement foresees that for the first time the Federal Government will provide a fixed € 2.5 billion per year over a multi-year period for capital expenditures in the existing network, while DB AG committed itself to maintain certain quality standards as well as € 500 million of its own funds for network, stations and the provision of energy. In addition, we also committed ourselves to spend at least an additional 1 billion euros per year to maintain the network.

Despite the fact that overall economic conditions have worsened dramatically since the end of 2008, DB Group is economically profitable and strategically well positioned. Many customers in our rail freight transport and logistics business cut back their production noticeably as the financial crisis developed into a global economic crisis. These moves have had corresponding effects on the volume of freight transported. Even though we cannot make exact forecasts at the start of 2009 about the future course of the economic crisis, we still reacted decisively and launched a new Group program designed to specifically deal with risks arising from the crisis. The program also includes other projects aimed at improving our position in the competition for customers and markets.

Even if we are keeping a sharp eye on our expenses and capital expenditures, we will continue to invest in our future – even during the crisis. Two examples of this are: first, the contract we signed in December for the purchase of 15 new ICE-3 train sets, and second, the latest general agreement we signed for 800 bi-level cars for our regional transport business.

We have proven in the past that we can realize major modernization programs throughout the Group and unlock potential to achieve new growth and greater efficiency. This is why I am convinced that when the next economic upturn begins DB Group will be better prepared and equipped than ever to successfully compete in the European rail market and the global logistics sector.

Sincerely yours,

A handwritten signature in blue ink, reading "Hartmut Mehdorn". The signature is written in a cursive style and is placed on a light grey rectangular background.

*Hartmut Mehdorn
CEO and Chairman
of the Management Board
of Deutsche Bahn AG*

DB GROUP

Management Board of Deutsche Bahn AG



STEFAN GARBER
Infrastructure

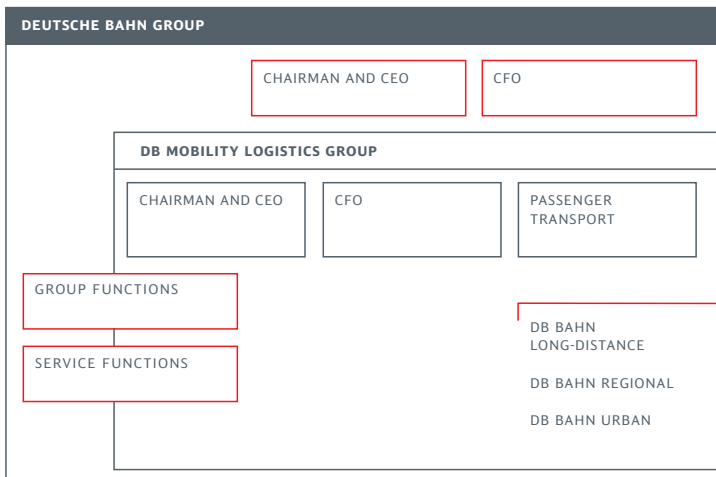
NORBERT HANSEN
Personnel

DR. OTTO WIESHEU
Economic and Political Affairs

HARTMUT MEHDORN
Chairman and CEO

DIETHELM SACK
CFO

Group Structure



Management Board of DB Mobility Logistics AG



DR. NORBERT BENSEL
Transport and Logistics

DR. KARL-FRIEDRICH RAUSCH
Passenger Transport

MARGRET SUCKALE
Personnel and Services

HARTMUT MEHDORN
Chairman and CEO

DIETHELM SACK
CFO

ECONOMIC AND
POLITICAL AFFAIRS

PERSONNEL

INFRASTRUCTURE

TRANSPORT AND
LOGISTICS

PERSONNEL AND
SERVICES

BUSINESS UNITS

DB SCHENKER RAIL

DB SERVICES

DB SCHENKER
LOGISTICS

BUSINESS UNITS

DB NETZE TRACK

DB NETZE STATIONS

DB NETZE ENERGY

Supervisory Board DB AG

Dr. Günther Saßmannshausen
Honorary Chairman
of the Supervisory Board

Dr. Werner Müller
Chairman
of the Supervisory Board

Alexander Kirchner*
Deputy Chairman
of the Supervisory Board

Georg Brunnhuber
Niels Lund Chrestensen
Christoph Dänzer-Vanotti
Achim Großmann
Dr.-Ing. Dr. E.h.
Jürgen Großmann
Horst Hartkorn*
Jörg Hensel*
Klaus-Dieter Hommel*
Günter Kirchheim*
Helmut Kleindienst*
Dr. Jürgen Krumnow
Vitus Müller*
Heike Moll*
Dr. Axel Nawrath
Dr. Walter Otremba
Ute Plambeck
Regina Rusch-Ziemba*
Dr.-Ing. E.h. Dipl.-Ing.
Heinrich Weiss

Supervisory Board DB ML AG

Dr. Werner Müller
Chairman
of the Supervisory Board

Wolfgang Zell*
Deputy Chairman
of the Supervisory Board

Dr. Josef Blank
Joachim Fried
Achim Großmann
Jörg Hensel*
Margarita Kiefer*
Dr. Jürgen Krumnow
Dr. Axel Nawrath
Dr. Walter Otremba
Ralf Skrzypietz*
Dr.-Ing. E.h. Dipl.-Ing.
Heinrich Weiss

* Employees' representative on the Supervisory Board
Information as of March 1, 2009

KEY FIGURES DB GROUP

Key Performance Figures

	2008	2007	Change in %
Rail passenger transport			
Passengers (million)	1,919	1,835	+ 4.6
Volume sold (million pkm) ¹⁾	77,791	74,792	+ 4.0
Volume produced (million train-path km) ²⁾	686.8	694.1	- 1.1
Trains per day	27,014	27,324	- 1.1
Rail freight transport			
Freight carried (million t)	378.7	312.8	+ 21.1
Volume sold (million tkm) ³⁾	113,634	98,794	+ 15.0
Volume produced (million train-path km) ²⁾	232.7	205.2	+ 13.4
Trains per day	5,386	4,717	+ 14.2
Mean transport distance (km)	300.1	315.9	- 5.0
Capacity utilization (t per train)	488.3	481.4	+ 1.4
Bus transport			
Passengers (million)	773.2	778.9	- 0.7
Volume sold (million pkm) ¹⁾	9,192	9,099	+ 1.0
Freight forwarding and logistics			
Shipments in European land transport (thousand)	72,340	69,568	+ 4.0
Air freight volume (export) (thousand t)	1,230	1,270	- 3.1
Ocean freight volume (thousand TEU ⁴⁾)	1,456	1,455	+ 0.1
Rail infrastructure			
Train kilometers (million train-path km) ²⁾	1,043	1,050	- 0.7
thereof non-Group customers	(161.5)	(146.6)	(+ 10.2)
Station stops (million)	143.1	142.8	+ 0.2
thereof non-Group customers	(17.9)	(16.2)	(+ 10.5)

¹⁾ Passenger kilometers: product of number of passengers and mean travel distance

²⁾ Train-path kilometers: driving performance in km of trains on rail

³⁾ Ton kilometers: product of freight carried and mean transport distance

⁴⁾ TEU: twenty-foot equivalent unit

Key Financial Figures DB Group

€ MILLION	2008	2007	Change in %
Revenues	33,452	31,309	+ 6.8
Revenues comparable	32,478	31,309	+ 3.7
Profit before taxes on income	1,807	2,016	- 10.4
Net profit for the year	1,321	1,716	- 23.0
EBITDA adjusted	5,206	5,113	+ 1.8
EBIT adjusted	2,483	2,370	+ 4.8
Non-current assets ¹⁾	42,353	42,046	+ 0.7
Current assets ¹⁾	5,840	6,483	- 9.9
Equity ¹⁾	12,155	10,953	+ 11.0
Net financial debt ¹⁾	15,943	16,513	- 3.5
Total assets ¹⁾	48,193	48,529	- 0.7
Capital employed	27,961	27,393	+ 2.1
ROCE	8.9%	8.7%	-
Redemption coverage	22.5%	21.1%	-
Gearing	131%	151%	-
Gross capital expenditures	6,765	6,320	+ 7.0
Net capital expenditures	2,599	2,060	+ 26.2
Cash flow from operating activities	3,539	3,364	+ 5.2

¹⁾ as of Dec 31

Key Financial Figures DB ML Group

€ MILLION	2008	2007	Change in %
Revenues	32,735	31,004	+ 5.6
Revenues comparable	31,761	31,004	+ 2.4
Profit before taxes on income	1,458	1,181	+ 23.5
Net profit for the year	1,069	1,057	+ 1.1
EBITDA adjusted	3,559	3,433	+ 3.7
EBIT adjusted	1,980	1,879	+ 5.4
Non-current assets ¹⁾	15,655	15,387	+ 1.7
Current assets ¹⁾	4,848	4,902	- 1.1
Equity ¹⁾	3,072	3,610	- 14.9
Net financial debt ¹⁾	6,601	6,285	+ 5.0
Total assets ¹⁾	20,503	20,289	+ 1.1
Capital employed	10,508	10,764	- 2.4
ROCE	18.8%	17.5%	-
Redemption coverage	31.8%	32.2%	-
Gearing	215%	174%	-
Net capital expenditures	1,532	1,333	+ 14.9
Cash flow from operating activities	2,389	2,469	- 3.2

¹⁾ as of Dec 31

Rating DB AG

Rating agency	Long-term rating	Short-term rating
Moody's	Aa1 Outlook "stable"	P-1
Standard & Poor's	AA Outlook "stable"	A-1+
Fitch	AA Outlook "stable"	F1+

Value Management

Return on capital employed € MILLION RESP. %	2008	2007	Change in %
EBIT adjusted	2,483	2,370	+ 4.8
÷ Capital employed	27,961	27,393	+ 2.1
= ROCE	8.9%	8.7%	-

Redemption coverage € MILLION RESP. %	2008	2007	Change in %
EBIT adjusted	2,483	2,370	+ 4.8
+ Operating net interest income ^{1), 2)}	- 746	- 832	- 10.3
+ Depreciation ²⁾	2,723	2,743	- 0.7
Operating cash flow	4,460	4,281	+ 4.2
Net financial debt	15,943	16,513	- 3.5
+ Present value operate leases	3,853	3,767	+ 2.3
÷ Adjusted net financial debt	19,796	20,280	- 2.4
Redemption coverage	22.5%	21.1%	-

Gearing € MILLION RESP. %	2008	2007	Change in %
Financial debt	16,853	18,062	- 6.7
- Cash and cash equivalents	910	1,549	- 41.3
Net financial debt	15,943	16,513	- 3.5
÷ Equity	12,155	10,953	+ 11.0
Gearing	131%	151%	-

¹⁾ To properly determine redemption coverage we utilize net operating interest by eliminating those components of net interest income/expense related to the compounding of non-current liabilities and provisions and the reversal of deferred income

²⁾ Adjusted for special items

Segment Information

Revenues € MILLION	2008	2007	Change in %
DB Bahn Long-Distance	3,523	3,265	+ 7.9
DB Bahn Regional	6,687	6,532	+ 2.4
DB Bahn Urban	1,962	1,879	+ 4.4
DB Schenker Rail	4,654	3,905	+ 19.2
DB Schenker Logistics	14,680	14,022	+ 4.7
DB Services	112	99	+ 13.1
DB Netze Track	725	617	+ 17.5
DB Netze Stations	344	328	+ 4.9
DB Netze Energy	554	454	+ 22.0
Other operating entities	211	208	+ 1.4
DB Group	33,452	31,309	+ 6.8

EBIT adjusted € MILLION	2008	2007	Change in %
DB Bahn Long-Distance	306	186	+ 64.5
DB Bahn Regional	857	830	+ 3.3
DB Bahn Urban	205	197	+ 4.1
DB Schenker Rail	307	357	- 14.0
DB Schenker Logistics	381	421	- 9.5
DB Services	131	145	- 9.7
DB Netze Track	670	592	+ 13.2
DB Netze Stations	210	186	+ 12.9
DB Netze Energy	74	185	- 60.0
Other operating entities/ consolidation effects	- 658	- 729	- 9.7
DB Group	2,483	2,370	+ 4.8

EBITDA adjusted € MILLION	2008	2007	Change in %
DB Bahn Long-Distance	678	554	+ 22.4
DB Bahn Regional	1,282	1,232	+ 4.1
DB Bahn Urban	352	345	+ 2.0
DB Schenker Rail	560	587	- 4.6
DB Schenker Logistics	551	590	- 6.6
DB Services	316	346	- 8.7
DB Netze Track	1,604	1,556	+ 3.1
DB Netze Stations	342	320	+ 6.9
DB Netze Energy	167	289	- 42.2
Other operating entities/ consolidation effects	- 646	- 706	- 8.5
DB Group	5,206	5,113	+ 1.8

Gross Capital Expenditures € MILLION	2008	2007	Change in %
DB Bahn Long-Distance	80	126	- 36.5
DB Bahn Regional	466	459	+ 1.5
DB Bahn Urban	132	107	+ 23.4
DB Schenker Rail	351	192	+ 82.8
DB Schenker Logistics	231	230	+ 0.4
DB Services	289	281	+ 2.8
DB Netze Track	4,648	4,433	+ 4.8
DB Netze Stations	456	350	+ 30.3
DB Netze Energy	147	178	- 17.4
Other operating entities/ consolidation effects	- 35	- 36	- 2.8
DB Group	6,765	6,320	+ 7.0

Net Capital Expenditures € MILLION	2008	2007	Change in %
DB Bahn Long-Distance	79	119	- 33.6
DB Bahn Regional	438	395	+ 10.9
DB Bahn Urban	120	95	+ 26.3
DB Schenker Rail	350	186	+ 88.2
DB Schenker Logistics	231	230	+ 0.4
DB Services	287	280	+ 2.5
DB Netze Track	1,024	594	+ 72.4
DB Netze Stations	70	95	- 26.3
DB Netze Energy	45	104	- 56.7
Other operating entities/ consolidation effects	- 45	- 38	+ 18.4
DB Group	2,599	2,060	+ 26.2

Employees FTE ¹⁾ as of Dec 31	2008	2007	Change in %
DB Bahn Long-Distance	14,603	15,011	- 2.7
DB Bahn Regional	25,084	24,781	+ 1.2
DB Bahn Urban	12,259	12,221	+ 0.3
DB Schenker Rail	29,242	28,067	+ 4.2
DB Schenker Logistics	62,074	59,605	+ 4.1
DB Services	24,911	26,808	- 7.1
Other activities (DB ML Group)	9,425	7,804	+ 20.8
DB ML Group	177,598	174,297	+ 1.9
DB Netze Track	40,974	39,780	+ 3.0
DB Netze Stations	4,509	4,537	- 0.6
DB Netze Energy	1,556	1,611	- 3.4
Other activities (DB Group excl. DB ML Group)	15,605	16,853	- 7.4
DB Group	240,242	237,078	+ 1.3
Apprentices/trainees	8,963	8,594	+ 4.3
thereof DB ML Group	(6,927)	(6,562)	(+ 5.6)
DB Group (incl. apprentices/trainees)	249,205	245,672	+ 1.4
thereof DB ML Group	(184,525)	(180,859)	(+ 2.0)
Training ratio (%)	3.7	3.6	-
thereof DB ML Group	(3.9)	(3.8)	(-)
Female employees ²⁾	39,621	39,389	+ 0.6
thereof DB ML Group	(20,074)	(19,738)	(+ 1.7)
Proportion of female employees (%)	15.7	15.8	-
thereof DB ML Group	(10.7)	(10.7)	(-)
Civil servants assigned	37,429	38,764	- 3.4
thereof DB ML Group	(20,394)	(21,018)	(- 3.0)
Civil servants on sabbatical	3,746	3,794	- 1.3
thereof DB ML Group	(2,086)	(1,900)	(+ 9.8)
Part-time employees ²⁾	15,352	16,768	- 8.4
thereof DB ML Group	(7,457)	(7,262)	(+ 2.7)
Proportion of part-time employees (%)	6.1	6.7	-

¹⁾ FTE = Full-time employees; for better comparability part-time employees are converted into equivalent full-time employees in accordance with their share of the normal annual work time

²⁾ Employees (natural persons)

FIGURES BY BUSINESS UNITS

Business Units Passenger Transport

	2008	2007	Change in %
Rail performance figures			
Passengers (million)	1,919	1,835	+ 4.6
DB Bahn Long-Distance	123.2	118.7	+ 3.8
DB Bahn Regional	1,242.4	1,206.3	+ 3.0
DB Bahn Urban	583.6	540.5	+ 8.0
Multiple counts	- 30.0	- 30.0	-
Passengers per day (million)	5.24	5.03	+ 4.2
DB Bahn Long-Distance	0.34	0.33	+ 3.0
DB Bahn Regional	3.39	3.30	+ 2.7
DB Bahn Urban	1.59	1.48	+ 7.7
Multiple counts	- 0.08	- 0.08	-
Volume sold (million pkm)	77,791	74,792	+ 4.0
DB Bahn Long-Distance	35,457	34,137	+ 3.9
DB Bahn Regional	36,866	35,292	+ 4.5
DB Bahn Urban	5,468	5,362	+ 2.0
Volume produced (million train-path km)	686.8	694.1	- 1.1
DB Bahn Long-Distance	151.6	152.8	- 0.8
DB Bahn Regional	490.7	498.0	- 1.5
DB Bahn Urban	44.5	43.3	+ 2.7
Trains per day	27,014	27,324	- 1.1
DB Bahn Long-Distance	1,441	1,419	+ 1.6
DB Bahn Regional	21,550	22,054	- 2.3
DB Bahn Urban	4,023	3,851	+ 4.5
Bus performance figures			
Passengers (million)	773.2	778.9	- 0.7
Volume sold (million pkm)	9,192	9,099	+ 1.0
Volume produced (bus km)	622.9	602.3	+ 3.4

	2008	2007	Change in %
Rolling stock			
ICE fleet (number of trains)	252	252	-
Rail cars ¹⁾	9,377	9,175	+ 2.2
S-Bahn (metro) d.c.	1,857	1,895	- 2.0
S-Bahn (metro) a.c.	2,534	2,547	- 0.5
Diesel railcars	3,283	3,136	+ 4.7
Rail buses	25	25	-
Electric railcars/Electric multiple units ²⁾ (EMUs)	1,678	1,572	+ 6.7
Locomotives	1,841	1,942	- 5.2
DB Bahn Long-Distance ³⁾	458	448	+ 2.2
DB Bahn Regional	1,381	1,492	- 7.4
DB Bahn Urban	2	2	-
Passenger cars	9,216	9,800	- 6.0
DB Bahn Long-Distance ²⁾	3,588	3,657	- 1.9
DB Bahn Regional	5,628	6,143	- 8.4
DB Bahn Urban	0	0	-
Seats	1,284,406	1,311,265	- 2.0
DB Bahn Long-Distance	215,446	213,721	+ 0.8
DB Bahn Regional	972,143	999,107	- 2.7
DB Bahn Urban	96,817	98,437	- 1.6
Automatic ticketing machines	8,955	9,118	- 1.8
DB Bahn Long-Distance	1,468	1,803	- 18.6
DB Bahn Regional and Urban	4,478	5,682	- 21.2
Combined ticketing machines	3,009	1,633	+ 84.3
BahnCards (thousand)	3,989	3,996	- 0.2
BahnCard 100	32	29	+ 11.8
BahnCard 50	1,738	1,735	+ 0.1
BahnCard 25	2,219	2,232	- 0.6
BahnBonus program			
Participants (thousand)	2,500	1,900	+ 31.6

¹⁾ Including rail buses

²⁾ Including ICE cars

³⁾ Including ICE 1 and ICE 2 power cars

DB Bahn Long-Distance

	2008	2007	Change in %
Financial figures			
Revenues (€ million)	3,523	3,265	+ 7.9
EBIT adjusted (€ million)	306	186	+ 64.5
EBITDA adjusted (€ million)	678	554	+ 22.4
Gross capital expenditures (€ million)	80	126	- 36.5
Employees (FTE) as of Dec 31	14,603	15,011	- 2.7
Performance figures			
Passengers (million)	123.2	118.7	+ 3.8
ICE	74.7	70.5	+ 6.0
IC/EC	53.0	52.1	+ 1.7
Other products (incl. AutoZug and CNL)	5.4	5.8	- 7.2
Multiple counts	- 9.9	- 9.7	+ 2.1
Passengers per day (million)	0.34	0.33	+ 3.0
Volume sold (million pkm)	35,457	34,137	+ 3.9
ICE	23,333	21,919	+ 6.5
IC/EC	10,136	9,946	+ 1.9
Other products (incl. AutoZug and CNL)	1,988	2,273	- 12.5
Volume produced (million train-path km)	151.6	152.8	- 0.8
Mean journey distance (km)	287.8	287.6	+ 0.1
thereof ICE	(312.4)	(310.9)	(+ 0.5)
thereof IC/EC	(191.3)	(190.9)	(+ 0.2)
Load factor (%)	44.2	42.1	-
Trains per day	1,441	1,419	+ 1.6
Locomotives	295	284	+ 3.9
Electric locomotives	246	245	+ 0.4
Diesel locomotives	49	39	+ 25.6
Passenger cars	2,127	2,196	- 3.1
EC/IC	1,503	1,462	+ 2.8
Restaurant cars	179	188	- 4.8
Couchettes cars	148	201	- 26.4
Sleeping cars	76	102	- 25.5
Double-deck cars	0	0	-
Other cars (incl. baggage car)	221	243	- 9.1
High-speed fleet			
ICE fleet (number of trains)	252	252	-

	2008	2007	Change in %
ICE 1			
Number of trains	59	59	-
Power cars	117	118	- 0.8
Intermediate cars	708	708	-
1st class cars	195	195	-
2nd class cars	454	454	-
Restaurant cars	59	59	-
ICE 2			
Number of trains	44	44	-
Power cars	46	46	-
Driving trailers	45	45	-
Intermediate cars	264	264	-
1st class cars	88	88	-
2nd class cars	132	132	-
Restaurant cars	44	44	-
ICE T			
Multiple units	67	67	-
Rail cars	260	260	-
End cars	136	136	-
Intermediate cars	56	56	-
ICE TD			
Multiple units	19	19	-
Rail cars	78	78	-
End cars	39	39	-
Intermediate cars	39	39	-
ICE 3			
Multiple units	63	63	-
Rail cars	252	252	-
1st class rail cars	63	63	-
2nd class rail cars	189	189	-
Trailer cars	252	252	-
1st class rail cars	63	63	-
2nd class rail cars	126	126	-
Restaurant cars	63	63	-
Seats	215,446	213,721	+ 0.8
1st class, total	44,663	44,723	- 0.1
2nd class, total	170,783	168,998	+ 1.1

DB Bahn Regional

	2008	2007	Change in %
Financial figures			
Revenues (€ million)	6,687	6,532	+ 2.4
thereof concession fees (€ million)	(4,119)	(4,147)	(- 0.7)
EBIT adjusted (€ million)	857	830	+ 3.3
EBITDA adjusted (€ million)	1,282	1,232	+ 4.1
Gross capital expenditures (€ million)	466	459	+ 1.5
Employees (FTE) as of Dec 31	25,084	24,781	+ 1.2
Performance figures			
Passengers (million)	1,242	1,206	+ 3.0
Passengers per day (million)	3.39	3.30	+ 2.7
Volume sold (million pkm)	36,866	35,292	+ 4.5
Volume produced (million train-path km)	490.7	498.0	- 1.5
Trains per day	21,550	22,054	- 2.3
Mean journey distance (km)	29.7	29.3	+ 1.3
Locomotives			
	1,381	1,492	- 7.4
Electric locomotives	1,167	1,232	- 5.3
Diesel locomotives	214	260	- 17.7
Rolling stock			
	12,558	12,833	- 2.1
S-Bahn (metro) d.c.	0	0	-
S-Bahn (metro) a.c.	2,534	2,547	- 0.5
Diesel rail cars	3,205	3,058	+ 4.8
Rail buses	25	25	-
Electric rail cars	1,166	1,060	+ 10.0
Double-deck cars	2,223	2,183	+ 1.8
Other passenger cars (incl. baggage cars)	3,405	3,960	- 14.0
Seats			
	972,143	999,107	- 2.7
1st class	77,617	81,863	- 5.2
2nd class (incl. folding seats)	894,526	917,244	- 2.5

DB Bahn Urban

	2008	2007	Change in %
Financial figures			
Revenues (€ million)	1,962	1,879	+ 4.4
thereof concession fees	(354)	(336)	(+ 5.4)
EBIT adjusted (€ million)	205	197	+ 4.1
EBITDA adjusted (€ million)	352	345	+ 2.0
Gross capital expenditures (€ million)	132	107	+ 23.4
Employees (FTE) as of Dec 31	12,259	12,221	+ 0.3
Rail performance figures			
Passengers (million)	583.6	540.5	+ 8.0
Passengers per day (million)	1.59	1.48	+ 7.7
Volume sold (million pkm)	5,468	5,362	+ 2.0
Volume produced (million train-path km)	44.5	43.3	+ 2.8
Trains per day	4,023	3,851	+ 4.5
Mean journey distance (km)	9.4	9.9	- 5.3
Rolling stock			
	1,857	1,895	- 2.0
S-Bahn (metro) d.c.	1,857	1,895	- 2.0
S-Bahn (metro) a.c.	0	0	-
Seats			
	96,817	98,437	- 1.6
1st class	0	0	-
2nd class (incl. folding seats)	96,817	98,437	- 1.6
Bus performance figures			
Passengers (million)	720.1	722.6	- 0.3
Volume sold (million pkm)	8,371	8,228	+ 1.7
Volume produced (million bus km)	591.5	570.4	+ 3.7

DB Schenker Rail

	2008	2007	Change in %
Financial figures			
Revenues (€ million)	4,654	3,905	+ 19.2
EBIT adjusted (€ million)	307	357	- 14.0
EBITDA adjusted (€ million)	560	587	- 4.6
Gross capital expenditures (€ million)	351	192	+ 82.8
Employees (FTE) as of Dec 31	29,242	28,067	+ 4.2
Performance figures			
Freight carried (million t)	378.7	312.8	+ 21.1
Volume sold (million tkm)	113,634	98,794	+ 15.0
Volume produced (million train-path km)	232.7	205.2	+ 13.4
Trains per day	5,386	4,717	+ 14.2
Mean transport distance	300.1	315.9	- 5.0
Capacity utilization (t per train)	488.3	481.4	+ 1.4
Locomotives			
	3,298	3,068	+ 7.5
Electric locomotives	1,447	1,419	+ 2.0
Diesel locomotives	1,851	1,649	+ 12.2
Wagons			
Covered wagons	23,070	21,845	+ 5.6
Open wagons	35,267	29,312	+ 20.3
Flat wagons	48,103	44,236	+ 8.7
Tank wagons	1,492	282	-
Total DB stock	107,932	95,675	+ 12.8
Leased wagons	3,779	631	-
Rented from third parties	17,398	7,816	+ 123
Rented to third parties	9,193	5,998	+ 53.3
Total	119,916	98,124	+ 22.2
Transport capacity of freight wagons (thousand t)			
Covered wagons	871	855	+ 1.9
Open wagons	1,873	1,666	+ 12.4
Flat wagons	2,694	2,523	+ 6.8
Tank wagons	23	8	-
Total DB stock	5,461	5,052	+ 8.1
Leased wagons	261	26	-
Rented from third parties	908	518	+ 75.3
Rented to third parties	399	325	+ 22.8
Total	6,231	5,271	+ 18.2

DB Schenker Logistics

	2008	2007	Change in %
Financial figures			
Revenues (€ million)	14,680	14,022	+ 4.7
EBIT adjusted (€ million)	381	421	- 9.5
EBITDA adjusted (€ million)	551	590	- 6.6
Gross capital expenditures (€ million)	231	230	+ 0.4
Employees (FTE) as of Dec 31	62,074	59,605	+ 4.1
Performance figures			
Shipments in European land transport (thousand)	72,340	69,568	+ 4.0
Air freight volume (export) (thousand t)	1,230	1,270	- 3.1
Ocean freight volume (thousand TEU)	1,456	1,455	+ 0.1

DB Services

	2008	2007	Change in %
Financial figures			
Segment revenues (€ million)	3,015	3,192	- 5.5
thereof external revenues	(112)	(99)	(+13.1)
EBIT adjusted (€ million)	131	145	- 9.7
EBITDA adjusted (€ million)	316	346	- 8.7
Gross capital expenditures (€ million)	289	281	+ 2.8
Employees FTE as of Dec 31	24,911	26,808	- 7.1

DB Netze Track

	2008	2007	Change in %
Financial figures			
Segment revenues (€ million)	5,551	5,389	+ 3.0
thereof external revenues	(725)	(617)	(+17.5)
EBIT adjusted (€ million)	670	592	+13.2
EBITDA adjusted (€ million)	1,604	1,556	+ 3.1
Gross capital expenditures (€ million)	4,648	4,433	+ 4.8
Employees FTE as of Dec 31	40,974	39,780	+ 3.0

	2008	2007	Change in %
Performance figures			
Train kilometers on track infrastructure (million train-path km)			
DB Netze Track	1,042	1,049	- 0.7
thereof non-Group customers	(161.5)	(146.6)	(+10.2)
DB Group	1,043	1,050	- 0.7
thereof non-Group customers	(161.5)	(146.6)	(+10.2)
Rail infrastructure			
Length of line operated (km)	33,862	33,978	- 0.3
thereof electrified	(19,645)	(19,544)	(+ 0.5)
thereof DB Netze Track	(33,780)	(33,897)	(- 0.3)
Standard gauge	33,855	33,971	- 0.3
Other gauge	7	7	-
Length of all track (km)	64,113	63,987	+ 0.2
thereof DB Netze Track	(64,022)	(63,898)	(+ 0.2)
Switches and crossings	69,311	71,222	- 2.7
thereof DB Netze Track	(69,232)	(71,144)	(- 2.7)
Stations	4,226	4,233	- 0.2
thereof DB Netze Track	(4,214)	(4,222)	(- 0.2)
Stopping points	3,626	3,581	+ 1.3
thereof DB Netze Track	(3,609)	(3,564)	(+ 1.3)
Interlockings	4,479	4,590	- 2.4
thereof electronic	(893)	(815)	(+ 9.6)
thereof DB Netze Track	(4,474)	(4,585)	(- 2.4)
thereof electronic	(893)	(815)	(+ 9.6)
Level crossings	18,050	19,081	- 5.4
thereof technically protected	(10,600)	(10,968)	(- 3.4)
thereof DB Netze Track	(17,981)	(19,011)	(- 5.4)
thereof technically protected	(10,555)	(10,923)	(- 3.4)
Tunnels	770	778	- 1.0
Subterranean	615	615	-
Above ground	155	163	- 4.9
Tunnel length (km)	492.2	482.5	+ 2.0
Length of longest tunnel (m)	10,779	10,779	-
Railway bridges	27,107	27,178	- 0.3
thereof DB Netze Track	(27,094)	(27,165)	(- 0.3)
Private sidings	3,732	3,998	- 6.7

DB Netze Stations

	2008	2007	Change in %
Financial figures			
Segment revenues (€ million)	1,253	1,100	+13.9
thereof external revenues	(344)	(328)	(+ 4.9)
EBIT adjusted (€ million)	210	186	+12.9
EBITDA adjusted (€ million)	342	320	+ 6.9
Gross capital expenditures (€ million)	456	350	+ 30.3
Employees (FTE) as of Dec 31	4,509	4,537	- 0.6
Station stops (million)			
DB Station & Service AG	140.3	140.2	+ 0.1
thereof non-Group customers	(17.9)	(16.2)	(+ 10.5)
DB Netze Stations	140.3	140.2	+ 0.1
DB RegioNetz			
Infrastruktur GmbH	2.4	2.2	+ 9.1
UBB Usedomer Bäderbahn	0.4	0.4	-
DB Group	143.1	142.8	+ 0.2
thereof non-Group customers	(17.9)	(16.2)	(+ 10.5)
Passenger stations			
DB Station & Service AG	5,413	5,395	+ 0.3
DB Netze Stations	5,413	5,395	+ 0.3
DB RegioNetz			
Infrastruktur GmbH	277	277	-
UBB Usedomer Bäderbahn	28	27	+ 3.7
DB Group	5,718	5,699	+ 0.3

DB Netze Energy

	2008	2007	Change in %
Financial figures			
Segment revenues (€ million)	2,276	2,144	+ 6.2
thereof external revenues	(554)	(454)	(+ 22.0)
EBIT adjusted (€ million)	74	185	- 60.0
EBITDA adjusted (€ million)	167	289	- 42.2
Gross capital expenditures (€ million)	147	178	- 17.4
Employees FTE as of Dec 31	1,556	1,611	- 3.4

10-YEAR SUMMARIES

Rail Performance Figures

	2008	2007	2006	2005
Passenger transport				
Passengers (million)	1,919	1,835	1,854	1,785
Long-Distance Transport	123	119	120	119
Regional and Urban Transport ¹⁾	1,796	1,717	1,735	1,667
Volume sold (million pkm ²⁾)	77,791	74,792	74,788	72,554
Long-Distance Transport	35,457	34,137	34,458	33,641
Regional and Urban Transport ¹⁾	42,334	40,654	40,331	38,913
Freight transport				
Freight carried (million t)	378.7	312.8	307.6	274.6
Volume sold (million tkm ³⁾)	113,634	98,794	96,388	88,022
Total transport performance (million ptkm ⁴⁾)	191,425	173,586	171,177	160,576
Track Infrastructure				
Train kilometers (million train-path km ⁵⁾)	1,043	1,050	1,016	998
thereof non-Group customers	(162)	(147)	(128)	(110)

Employees⁶⁾

	2008	2007	2006	2005
Average	240,008	231,356	228,990	220,343
At year end	240,242	237,078	229,200	216,389

¹⁾ Adjusted for multiple counts

²⁾ Passenger kilometers: Product of number of passengers and mean travel distance

³⁾ Ton kilometers: Product of freight carried and mean transport distance

⁴⁾ Passenger-ton-kilometers: Sum of passenger and ton kilometers

⁵⁾ Train path kilometers: driving performance in km of trains on rail

⁶⁾ Full-time employees, part-time employees are converted in accordance with their share of normal annual work time

	2004	2003	2002	2001	2000	1999
	1,695	1,681	1,657	1,702	1,713	1,681
	115	117	128	136	145	147
	1,580	1,564	1,529	1,566	1,568	1,534
	70,260	69,534	69,848	74,459	74,388	72,846
	32,330	31,619	33,173	35,342	36,226	34,897
	37,930	37,915	36,675	39,117	38,162	37,949
	295.3	282.3	289.4	291.3	310.8	289.7
	89,494	85,151	82,756	84,716	85,008	75,785
	159,754	154,685	152,604	159,175	159,396	148,631
	1,001	988	967	977	984	977
	(88)	(70)	(50)	(39)	(26)	(20)

	2004	2003	2002	2001	2000	1999
	229,830	249,251	224,758	219,146	230,615	244,851
	225,632	242,759	250,690	214,371	222,656	241,638

Consolidated Statement of Income

€ MILLION	2008	2007	2006	2005
Revenues	33,452	31,309	30,053	25,055
Overall performance	35,324	33,254	31,943	26,728
Other operating income	3,046	3,219	2,859	2,366
Cost of materials	- 18,544	- 17,166	- 16,449	- 12,650
Personnel expenses	- 10,583	- 9,913	- 9,782	- 9,211
Depreciation	- 2,723	- 2,795	- 2,950	- 2,801
Other operating expenses	- 3,927	- 3,704	- 3,144	- 3,080
Operating profit (EBIT)	2,593	2,895	2,477	1,352
Investment income	-	-	-	-
Result from investments accounted for using the equity method	21	32	18	76
Other financial result	- 47	- 3	1	7
Net interest income	- 760	- 908	- 941	- 945
Profit before taxes on income	1,807	2,016	1,555	490
Net profit for the year	1,321	1,716	1,680	611

Operating Income/Value Management

€ MILLION	2008	2007	2006	2005
EBITDA	5,316	5,690	5,427	4,153
Special burden compensation	-	-	-	-
EBITDA before special burden compensation	-	-	-	-
EBITDA adjusted	5,206	5,113	-	-
EBIT adjusted	2,483	2,370	2,143	1,350
Capital employed	27,961	27,393	28,693	27,013
Return on capital employed (ROCE)	8.9%	8.7%	7.5%	5.0%
Redemption coverage	22.5%	21.1%	18.6%	14.7%
Gearing	131%	151%	213%	256%

¹⁾ Figures according to German GAAP

	2004	2003 ¹⁾	2002 ¹⁾	2001 ¹⁾	2000 ¹⁾	1999 ¹⁾
	23,962	28,228	18,685	15,722	15,465	15,630
	25,890	30,438	20,900	17,535	17,267	17,521
	2,860	3,138	2,830	2,406	3,653	2,511
	-12,054	-15,776	-9,546	-7,108	-6,625	-6,688
	-9,556	-10,337	-8,387	-7,487	-8,475	-8,285
	-2,722	-2,694	-2,434	-2,162	-2,052	-1,965
	-3,274	-4,316	-3,358	-3,282	-3,436	-2,790
	1,144	-	-	-	-	-
	-	51	46	2	-44	-55
	49	-	-	-	-	-
	-55	-	-	-	-	-
	-984	-637	-489	-313	-251	-158
	154	-133	-438	-409	37	91
	180	-245	-468	-406	85	87

	2004	2003 ¹⁾	2002 ¹⁾	2001 ¹⁾	2000 ¹⁾	1999 ¹⁾
	3,866	3,092	2,464	2,271	2,492	2,036
	-	-	443	838	1,228	1,609
	-	-	2,021	1,433	1,264	427
	-	-	-	-	-	-
	1,011	465	37	109	450	71
	26,490	30,964	30,428	28,649	27,443	24,911
	3.8%	1.5%	0.1%	0.4%	1.6%	0.3%
	12.7%	-	-	-	-	-
	276%	-	-	-	-	-

Cash Flow/Capital Expenditures

€ MILLION	2008	2007	2006	2005
Cash flow from operating activities	3,539	3,364	3,678	2,652
Gross capital expenditures	6,765	6,320	6,584	6,381
Net capital expenditures	2,599	2,060	2,836	2,362

Balance Sheet

€ MILLION	2008	2007	2006	2005
Non-current assets	42,353	42,046	43,360	42,907
thereof property, plant and equipment and intangible assets	(39,976)	(39,855)	(41,081)	(40,430)
thereof deferred tax assets	(1,692)	(1,644)	(1,800)	(1,556)
Current assets	5,840	6,483	5,080	4,194
thereof cash and cash equivalents	(879)	(1,549)	(295)	(305)
Equity	12,155	10,953	9,214	7,675
Equity ratio	25.2%	22.6%	19.0%	16.3%
Non-current liabilities	23,161	25,612	26,319	27,963
thereof financial debt	(14,083)	(16,228)	(17,165)	(18,310)
thereof retirement benefit obligations	(1,649)	(1,594)	(1,514)	(1,414)
Current liabilities	12,877	11,964	12,907	11,463
thereof financial debt	(2,770)	(1,834)	(2,716)	(1,664)
Net financial debt	15,943	16,513	19,586	19,669
Total assets	48,193	48,529	48,440	47,101

¹⁾ Figures according to German GAAP

	2004	2003 ¹⁾	2002 ¹⁾	2001 ¹⁾	2000 ¹⁾	1999 ¹⁾
	2,736	-	-	-	-	-
	7,238	9,121	9,994	7,110	6,892	8,372
	3,251	4,013	5,355	3,307	3,250	3,229

	2004	2003 ¹⁾	2002 ¹⁾	2001 ¹⁾	2000 ¹⁾	1999 ¹⁾
	43,200	-	-	-	-	-
	(40,861)	(40,093)	(38,869)	(35,055)	(34,071)	(32,815)
	(1,301)	(-)	(-)	(-)	(-)	(-)
	4,416	-	-	-	-	-
	(765)	(265)	(271)	(363)	(394)	(280)
	7,067	5,076	5,708	8,436	8,788	8,701
	14.8%	10.7%	12.4%	20.1%	22.3%	23.5%
	29,440	30,464	27,779	24,421	21,331	21,149
	(19,045)	(-)	(-)	(-)	(-)	(-)
	(1,341)	(-)	(-)	(-)	(-)	(-)
	11,109	12,107	12,524	9,090	9,329	7,325
	(1,231)	(-)	(-)	(-)	(-)	(-)
	19,511	-	-	-	-	-
	47,616	47,647	46,023	41,962	39,467	37,198

CONTACT ADDRESSES

INVESTOR RELATIONS

Wolfgang Reuter
Group Treasurer,
Head of M&A,
Head of Investor Relations
Phone +49 (0) 30 297-6 16 50

Robert Allen Strehl
Phone +49 (0) 30 297-6 16 76

Deutsche Bahn AG/
DB Mobility Logistics AG
Potsdamer Platz 2
10785 Berlin, Germany
Fax +49 (0) 30 297-6 19 83
ir@deutschebahn.com
www.deutschebahn.com/
ir-english

COMMUNICATIONS**Group Contacts**

Ralf Klein-Bölting

Chief Representative Marketing
and Communications
Phone +49 (0) 30 2 97-6 14 21

Reinhard Boeckh

Vice-spokesman of DB Group
Phone +49 (0) 30 2 97-6 11 80

Uwe Herz

Spokesman Personnel
and Services
Phone +49 (0) 30 2 97-6 11 96

Bernd Weiler

Spokesman International
Communications
Phone +49 (0) 30 2 97-6 14 75

Oliver Schumacher

Spokesman of DB Group, Head
of Corporate Communications
Phone +49 (0) 30 2 97-6 14 80

Achim Stauß

Regional Communication
Phone +49 (0) 30 2 97-6 11 90

Christine Geißler-Schild

Spokeswoman Integrated
Systems Rail,
Phone +49 (0) 30 2 97-6 11 68

Hartmut Sommer

Spokesman Economic
and Political Affairs
Phone +49 (0) 30 2 97-6 21 09

Deutsche Bahn AG/
DB Mobility Logistics AG
Potsdamer Platz 2
10785 Berlin, Germany
Phone +49 (0) 30 2 97-6 11 31
Fax +49 (0) 30 2 97-6 19 19
medienbetreuung@
deutschebahn.com
www.deutschebahn.com/presse

**Passenger Transport, Transport and Logistics as well as
Infrastructure Contacts**

Passenger Transport**Jürgen Kornmann**

DB Mobility Logistics AG
Lennéstrasse 5
10785 Berlin, Germany
Phone +49 (0) 30 2 97-6 00 10
Fax +49 (0) 30 2 97-6 00 12

Infrastructure**Martin Walden**

Deutsche Bahn AG
Köthener Strasse 2-3
10785 Berlin, Germany
Phone +49 (0) 30 2 97-6 87 50
Fax +49 (0) 30 2 97-6 87 49

Transport and Logistics

Dr. Antje Lüssenhop

DB Mobility Logistics AG
Leipziger Platz 9
10117 Berlin, Germany
Phone +49 (0) 30 2 97-5 40 20
Fax +49 (0) 30 2 97-5 40 29

Press Spokespersons in the Regions

Baden-Württemberg

Ursula Eickhoff

DB Mobility Logistics AG
Communications
Presselstrasse 17
70191 Stuttgart, Germany
Phone +49 (0) 711 20 92-34 98
Fax +49 (0) 711 20 92-33 03

Bavaria

Franz Lindemair

DB Mobility Logistics AG
Communications
Richelstrasse 3
80634 Munich, Germany
Phone +49 (0) 89 13 08-14 98
Fax +49 (0) 89 13 08-19 01

Berlin/Brandenburg/

Mecklenburg-West Pomerania

Burkhard Ahlert

DB Mobility Logistics AG
Communications
Caroline-Michaelis-Strasse 5-11
10115 Berlin, Germany
Phone +49 (0) 30 2 97-5 82 00
Fax +49 (0) 30 2 97-5 82 06

Hesse/Rhineland-Palatinate/

Saarland

Torsten Sälinger

DB Mobility Logistics AG
Communications
Weilburger Strasse 22
60326 Frankfurt/Main, Germany
Phone +49 (0) 69 2 65-2 49 11
Fax +49 (0) 69 2 65-2 49 15

Lower Saxony/Bremen/
Hamburg/Schleswig-Holstein

Egbert Meyer-Lovis

DB Mobility Logistics AG
Communications
Museumstrasse 39
22765 Hamburg, Germany
Phone +49 (0) 40 39 18-44 98
Fax +49 (0) 69 2 65-3 64 74

North Rhine-Westphalia

Gerhard Felser

DB Mobility Logistics AG
Communications
Willi-Becker-Allee 11
40227 Düsseldorf, Germany
Phone +49 (0) 211 36 80-20 60
Fax +49 (0) 211 36 80-20 90

Saxony/Saxony-Anhalt/

Thuringia

Daniela Bals

DB Mobility Logistics AG
Communications
Dohnanyistrasse 11
04103 Leipzig, Germany
Phone +49 (0) 3 41 96 78-4 80
Fax +49 (0) 3 41 96 78-4 89

MANAGEMENT REPRESENTATIVES FOR THE FEDERAL STATES

Baden-Württemberg

Werner Klingberg

Presselstrasse 17
70191 Stuttgart, Germany
Phone +49 (0) 711 20 92-33 00
Fax +49 (0) 711 20 92-36 00

Bavaria

Klaus-Dieter Josel

Richelstrasse 3
80634 Munich, Germany
Phone +49 (0) 89 13 08-33 00
Fax +49 (0) 89 13 08-19 11

Berlin

Ingulf Leuschel

Potsdamer Platz 2
10785 Berlin, Germany
Phone +49 (0) 30 2 97-6 10 10
Fax +49 (0) 30 2 97-6 19 11

Brandenburg

Dr. Joachim Trettin

Babelsberger Strasse 18
14473 Potsdam, Germany
Phone +49 (0) 3 31 2 35-68 00
Fax +49 (0) 3 31 2 35-68 09

Bremen/Lower Saxony

Ulrich Bischooping

Joachimstrasse 8
30159 Hanover, Germany
Phone +49 (0) 5 11 2 86-33 00
Fax +49 (0) 5 11 2 86-41 31

Hamburg/Schleswig-Holstein

Ute Plambeck

Museumstrasse 39
22765 Hamburg, Germany
Phone +49 (0) 40 39 18-30 00
Fax +49 (0) 40 39 18-30 06

Hesse

Dr. Klaus Vornhusen

Weilburger Strasse 22
60326 Frankfurt/Main, Germany
Phone +49 (0) 69.2 65-2 47 00
Fax +49 (0) 69.2 65-2 47 09

Mecklenburg-West Pomerania

Dr. Joachim Trettin

Grunthalplatz 4
19053 Schwerin, Germany
Phone +49 (0) 3 85 750-33 00
Fax +49 (0) 3 85 750-33 49

North Rhine-Westphalia

Reiner Latsch

Willi-Becker-Allee 11
40227 Düsseldorf, Germany
Phone +49 (0) 2 11 36 80-20 00
Fax +49 (0) 2 11 36 80-20 50

Rhineland-Palatinate/
Saarland

Gerhard Schinner

Am Hauptbahnhof 4
66111 Saarbrücken, Germany
Phone +49 (0) 6 81 3 08-33 00
Fax +49 (0) 6 81 3 08-33 01

Saxony

Artur Stempel

Brandenburger Strasse 3a
04103 Leipzig, Germany
Phone +49 (0) 3 41 9 68-33 00
Fax +49 (0) 3 41 9 68-33 01

Saxony-Anhalt

Jobst Paul

Bahnhofstrasse 69
39104 Magdeburg, Germany
Phone +49 (0) 3 91 5 49-33 01
Fax +49 (0) 3 91 5 49-32 33

Thuringia

Gerold Brehm

Bahnhofstrasse 23
99084 Erfurt, Germany
Phone +49 (0) 3 61 3 00-33 00
Fax +49 (0) 3 61 3 00-44 38

SERVICE NUMBERS

DB Telephone Information

For general information inquiries please call our operator on +49 (0) 30 297-0.

DB Service Number

Our service number gives you direct access to all of our telephone services. Just dial 0180-5996633 and you will be automatically asked to select the service you require by responding verbally or by using your phone's keyboard, for example to book train tickets, find train times, service for handicapped travelers, or the bicycle hotline. Frequent travelers can access their individual personal service site by entering short commands or passwords.

Calls will be charged as follows: calls from the German fixed-line network cost 14 cents/min. Charges will vary for calls from cell phone networks.

Automatic Train Schedule Information

Free train schedule information is available 24 hours a day to callers using the German fixed-line network at +49 (0) 8001507090. Information is provided by our voice dialogue system.

Lost and Found Hotline

Phone +49 (0) 9001990599 (Note: charges are € 0.59 per minute for callers from the German fixed-line network; charges may vary for calls from German cell phone networks). Fundbuero.DBAG@bahn.de/
www.fundservice.bahn.de

FINANCIAL CALENDAR

August 20, 2009

Publication of the Interim Report January–June 2009

March 25, 2010

Annual Results Press Conference, Publication of 2009 Annual Report

IMPRINT

Concept, Editing

Deutsche Bahn AG/
DB Mobility Logistics AG,
Investor Relations

Consulting/ Production Coordination

Mentor Werbeberatung,
Kelkheim

Design concept

Studio Delhi
Konzept und Design,
Mainz

Typesetting

medienhaus:frankfurt,
Frankfurt/Main

Lithography

Koch Lichtsatz und Scan,
Wiesbaden

Printing

ColorDruck Leimen,
Leimen

Proofreading

AdverTEXT,
Düsseldorf

Photography

Max Lautenschläger
Marc Dachinger (pp. 6, 7)

DB'S MISSION STATEMENT ON TRACK FOR TOMORROW

2/2

WHAT IS OUR GOAL?

We are becoming the world's leading mobility and logistics company.

- /// WE WILL offer our customers innovative and individualized mobility and logistics solutions from a single source.
- /// WE WILL intelligently link together the various modes of transport in an economical and ecological way.
- /// WE WILL set standards for quality and customer satisfaction in our markets.
- /// WE WILL thus further expand our leading market positions.

HOW DO WE ACHIEVE THIS?

We convince customers, employees and investors.

- /// CUSTOMER-ORIENTED: We do everything to help each of our customers reach their goals in a simple, reliable and safe way.
- /// BUSINESS-ORIENTED: We place the sustainable increase of our Group's value at the core of all of our actions – this is how we secure our future.
- /// PROGRESSIVE: We encourage flexibility, a willingness to learn and the courage to question and continuously improve the status quo by offering a motivating work environment and the opportunity to share in the company's success.
- /// COLLABORATIVE: We think, work and act together across all functions and business units so we can realize our full potential.
- /// RESPONSIBLE: We are committed to social responsibility and see ourselves as a pioneer of climate-friendly and environmentally sustainable transport.



Deutsche Bahn AG
DB Mobility Logistics AG
Potsdamer Platz 2
10785 Berlin
Germany

www.deutschebahn.com
www.deutschebahn.com/dbml