



Facts and Figures 2000

Higher Transport Performance

We were able to increase our transport performance in passenger and freight transport significantly in 2000.

Positive Income Development

Our operating income after interest improved by € 286 million.

Modernization of Deutsche Bahn AG

A comprehensive fitness program and the expansion of our capital expenditures will pave the way to our becoming an even more effective railway.

Contents

2	Organizational Structure
----------	--------------------------

4	Seven-Year-Summary
----------	--------------------

4	Rail Transport Performance
----------	----------------------------

6	Consolidated Balance Sheet
----------	----------------------------

8	Consolidated Statement of Income Other Financial Figures
----------	---

10	Key Figures Employees
-----------	--------------------------

12	Segment Information
-----------	---------------------

12	Revenues Operating Income after Interest
-----------	---

13	Employees
-----------	-----------

14	Group Divisions
-----------	-----------------

14	Passenger Transport
-----------	---------------------

19	Freight Transport
-----------	-------------------

20	Passenger Stations Real Estate
-----------	-----------------------------------

21	Track Infrastructure
-----------	----------------------

22	Major Subsidiaries
-----------	--------------------

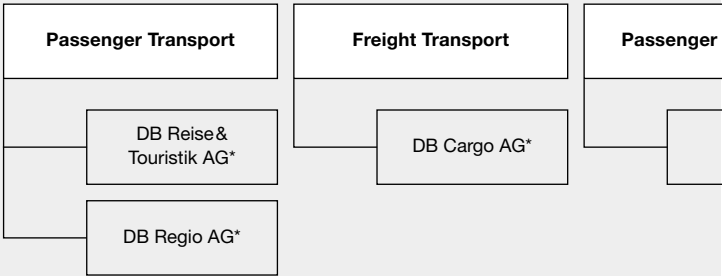
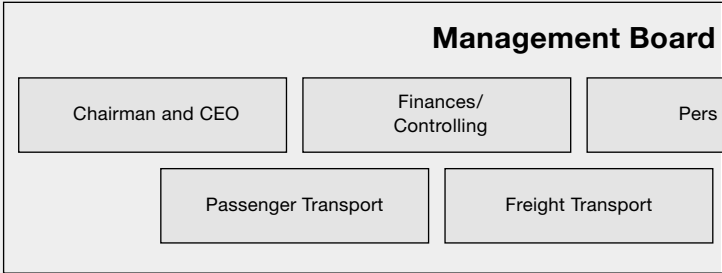
26	The Boards of Deutsche Bahn AG
-----------	--------------------------------

26	Supervisory Board
-----------	-------------------

28	Management Board
-----------	------------------

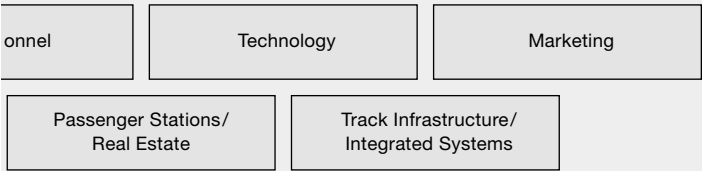
29	Contact Addresses
-----------	-------------------

Organizational Structure

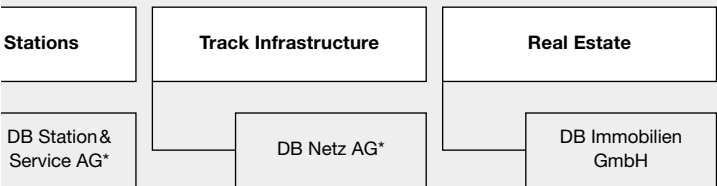


* and related subsidiaries

of Deutsche Bahn AG



Divisions



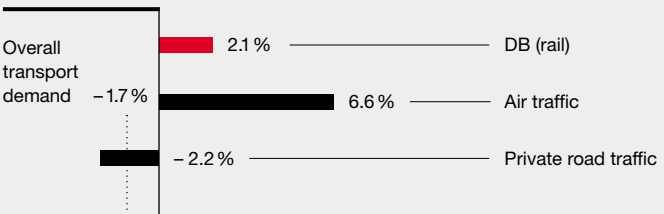
Rail Transport Performance

	2000	Change in %
Passenger transport		
Total passengers (million)	1,712.5	+ 1.9
thereof long-distance transport	144.8	- 1.2
thereof local rail transport	1,567.7	+ 2.2
Total passenger kilometers (million pkm)	74,388	+ 2.1
thereof long-distance transport	36,226	+ 3.8
thereof local rail transport	38,162	+ 0.6
Freight transport		
Freight carried (million t) ¹⁾	301.3	+ 7.9
Ton kilometers (million tkm) ¹⁾	80,634	+ 12.8
Total transport performance (million ptkm)	155,022	+ 7.4
Train kilometers (million train-path km)	984.2	+ 0.8

¹⁾ Until 1997 including less than carload-business;
from 2000 on including Railion Benelux

Growth rates in passenger transport sector 2000

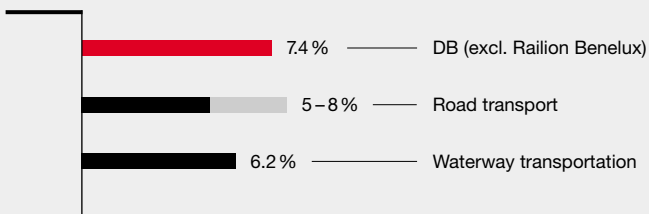
in %



1999	1998	1997	1996	1995	1994
1,680.1	1,668.4	1,641.0	1,596.4	1,539.4	1,430.6
146.5	148.9	152.2	151.2	149.3	139.3
1,533.6	1,519.5	1,488.8	1,445.2	1,390.1	1,291.3
72,846	71,853	71,630	71,028	70,334	64,539
34,897	34,562	35,155	35,620	36,277	34,845
37,949	37,291	36,475	35,408	34,057	29,694
279.3	288.7	294.9	287.9	300.4	306.9
71,494	73,273	72,614	67,880	69,492	70,554
144,340	145,126	144,244	138,908	139,826	135,093
976.7	946.5	-	-	-	-

Growth rates in freight transport sector 2000

in %



Consolidated Balance Sheet

in € million	2000	Change in %
Assets		
Properties ¹⁾	34,071	+ 3.8
Financial assets	600	- 11.8
Fixed assets	34,671	+ 3.5
Inventories	973	+ 12.4
Accounts receivable and other assets ²⁾	3,023	+ 28.9
Cash and cash equivalents	394	+ 40.7
Current assets	4,390	+ 25.7
Prepayments and accrued income	406	+ 92.4
Total assets	39,467	+ 6.1
Equity and liabilities		
Equity	8,788	+ 1.0
Special items	19	- 17.4
Pension and other long-term provisions	8,420	- 8.9
Tax and other short-term provisions	5,747	+ 54.7
Provisions	14,167	+ 9.4
Interest-free loans	6,714	+ 5.8
Interest-bearing debt	5,463	+ 30.3
Other liabilities	3,337	- 7.5
Liabilities	15,514	+ 9.7
Accruals and deferred income	979	- 28.7
Total liabilities and shareholder's equity	39,467	+ 6.1

¹⁾ Including intangible assets

²⁾ Including securities

1999	1998	1997	1996	1995	1994
32,815	31,155	29,866	24,034	21,815	17,982
680	584	665	710	367	305
33,495	31,739	30,531	24,744	22,182	18,287
866	654	604	490	597	709
2,346	2,141	2,277	3,755	3,139	1,804
280	351	447	603	654	640
3,492	3,146	3,328	4,848	4,390	3,153
211	76	33	30	48	53
37,198	34,961	33,892	29,622	26,620	21,493
8,701	8,528	8,422	6,711	6,278	6,218
23	38	47	205	177	154
9,241	9,881	9,627	9,902	9,128	7,585
3,714	2,612	2,181	2,237	1,979	1,401
12,955	12,493	11,808	12,139	11,107	8,986
6,344	8,284	7,363	6,308	4,781	2,340
4,192	2,532	1,713	858	606	513
3,609	2,971	4,413	3,284	3,570	3,203
14,145	13,787	13,489	10,450	8,957	6,056
1,374	115	126	117	101	79
37,198	34,961	33,892	29,622	26,620	21,493

Consolidated Statement of Income

in € million	2000	Change in %
Revenues	15,465	- 1.1
Overall performance	17,267	- 1.4
Other operating income	3,653	+ 45.5
Cost of materials	- 6,625	+ 0.9
Personnel expenses	- 8,475	- 2.3
Depreciation	- 2,052	- 4.4
Other operating expenses	- 3,436	- 23.2
Investment income	- 44	+ 20.0
Net interest	- 251	- 58.9
Income before taxes	37	- 59.3
Income after taxes	85	- 2.3

Other Financial Figures

in € million	2000	Change in %
EBITDA ¹⁾	2,502	+ 22.9
EBIT ²⁾	450	+ 533.8
Cash flow before taxes	2,113	+ 0.3
Short-term liabilities	9,329	+ 27.4
Long-term liabilities	21,331	+ 0.9
Capital employed ³⁾	27,443	+ 10.2
Gross capital expenditures	6,892	- 17.7
Net capital expenditures ⁴⁾	3,250	+ 0.7

¹⁾ Adjusted operating income before interest, taxes, and depreciation

²⁾ Adjusted operating income before interest and taxes

³⁾ (Properties and intangible fixed assets) less Interest-free loans plus Net working capital

⁴⁾ Gross capital expenditures less Investment grants from third parties

1999	1998	1997	1996	1995	1994
15,630	15,348	15,577	15,452	15,249	14,793
17,521	17,104	17,422	17,227	17,244	16,191
2,511	2,596	2,141	2,169	1,702	1,799
- 6,688	- 6,595	- 6,716	- 6,475	- 5,757	- 5,195
- 8,285	- 8,389	- 8,663	- 8,881	- 9,523	- 9,898
- 1,965	- 1,737	- 1,620	- 1,387	- 1,148	- 984
- 2,790	- 2,546	- 2,204	- 2,169	- 2,236	- 1,649
- 55	- 143	- 151	- 127	5	19
- 158	- 89	- 26	12	- 4	- 32
91	201	183	369	283	251
87	170	200	577	135	93

1999	1998	1997	1996	1995	1994
2,036	1,997	1,920	1,706	1,401	1,248
71	260	300	319	253	264
2,107	1,985	1,833	1,777	1,445	1,477
7,325	5,803	7,145	5,992	6,018	5,232
21,149	20,592	18,278	16,714	14,147	9,889
24,911	22,656	20,878	18,600	17,147	14,926
8,372	7,660	7,136	7,771	7,329	7,128
3,229	3,040	6,223	5,056	5,107	5,533

Key Figures

	2000	
Fixed assets as % of total assets	87.8	
Equity incl. special items in % of total assets	22.3	
Fixed assets coverage (in %) ¹⁾	86.9	
Cash flow coverage of net capex (in %)	65.0	
Return on capital employed (ROCE) (in %) ²⁾	1.6	
Interest coverage ³⁾	1.1	
Cash flow return on revenues (in %) ⁴⁾	13.7	
Return on revenues before interest expenses and taxes (in %)	2.5	

1) Long-term capital / Fixed assets

2) Return on capital employed, defined as EBIT / Capital employed

3) (Income before taxes plus Interest expenses) / Interest expenses

4) Cash flow / Revenues

Employees

	2000	Change in %
Employees		
average	230,615	– 5.8
at year end	222,656	– 7.9

1999	1998	1997	1996	1995	1994
90.0	90.8	90.1	83.5	83.3	85.1
23.5	24.5	25.0	23.3	24.2	29.6
89.2	91.9	87.6	95.5	92.9	88.9
65.3	65.3	29.5	35.1	28.3	26.7
0.3	1.1	1.4	1.7	1.5	1.8
1.4	2.3	2.4	5.2	4.3	4.6
13.5	12.9	11.8	11.5	9.5	10.0
2.1	2.3	2.0	2.9	2.4	2.2

1999	1998	1997	1996	1995	1994
244,851	259,072	277,471	295,610	331,774	355,694
241,638	252,468	268,273	288,768	312,579	331,101

Revenues

in € million	2000	1999	Change in %
Passenger Transport			
DB Reise & Touristik	3,463	3,257	+ 6.3
DB Regio	7,517	7,328	+ 2.6
Total	10,980	10,585	+ 3.7
Freight Transport	3,831	3,541	+ 8.2
Passenger Stations	200	184	+ 8.7
Track Infrastructure	110	83	+ 32.5
Real Estate	10	8	+ 25.0
Other operating entities/ Consolidation effects	334	324	+ 3.1
Group – comparable –	15,465	14,725	+ 5.0
Group – as reported –	15,465	15,630	– 1.1

Operating Income after Interest

in € million	2000	1999	Change in %
Passenger Transport			
DB Reise & Touristik	100	49	+ 104.1
DB Regio	73	185	– 60.5
Total	173	234	+ 26.1
Freight Transport	49	– 11	–
Passenger Stations	4	0	–
Track Infrastructure	57	11	+ 418.2
Real Estate	108	– 385	–
Other operating entities/ Consolidation effects	– 192	23	–
Group – comparable –	199	– 128	–
Group – as reported –	199	– 87	–

Employees

	2000	1999	Change in %
Passenger Transport			
DB Reise & Touristik	30,293	31,510	- 3.9
DB Regio	52,769	55,605	- 5.1
Total	83,062	87,115	- 4.7
Freight Transport	38,555	40,995	- 6.0
Passenger Stations	5,015	5,593	- 10.3
Track Infrastructure	53,554	57,629	- 7.1
Real Estate	1,293	1,286	+ 0.5
Holding	1,514	1,493	+ 1.4
Other subsidiaries	39,663	44,342	- 10.6
Group, employees excl. apprentices/trainees, DER	222,656	238,453	- 6.6
DER (sold effective Jan 1, 2000)	-	3,185	- 100.0
Group, employees excl. apprentices/trainees	222,656	241,638	- 7.9
Apprentices/trainees	11,851	14,438	- 17.9
Group, employees incl. apprentices/trainees	234,507	256,076	- 8.4
Training ratio Group (in %) ¹⁾	5.7	6.1	-
Female employees ²⁾	44,865	48,780	- 8.0
Proportion of female employees (in %)	19.6	19.7	-
Civil servants assigned ²⁾	55,850	65,001	- 14.1
Civil servants on sabbatical	2,470	2,537	- 2.6
Part-time employees ²⁾	13,062	11,509	+ 13.5
Proportion of part-time employees (in %)	5.6	4.6	-

¹⁾ Excl. special effects from DB Arbeit GmbH

²⁾ Employees (natural persons)

Passenger Transport

in € million	2000	1999	Change in %
External revenues			
DB Reise & Touristik	3,463	3,257	+ 6.3
DB Regio	7,517	7,328	+ 2.6
Total	10,980	10,585	+ 3.7
Intra-Group revenues	816	708	+ 15.3
Divisional revenues	11,796	11,293	+ 4.5
Operating income after interest			
DB Reise & Touristik	100	49	+ 104.1
DB Regio	73	185	- 60.7
Total	173	234	- 26.1
Gross cash flow			
DB Reise & Touristik	383	326	+ 17.5
DB Regio	559	580	- 3.6
Total	942	906	+ 4.0
Gross capital expenditures			
DB Reise & Touristik	499	615	- 18.9
DB Regio	1,305	1,311	- 0.5
Total	1,804	1,926	- 6.3
Employees (as of Dec 31, 2000)			
DB Reise & Touristik	30,293	31,510	- 3.9
DB Regio	52,769	55,605	- 5.1
Total	83,062	87,115	- 4.7

	2000	1999	Change in %	
Passengers (million)				
DB Reise & Touristik	144.8	146.5	-	1.2
DB Regio	1,567.7	1,533.6	+	2.2
Total	1,712.5	1,680.1	+	1.9
Number of passengers per day (million)				
DB Reise & Touristik	0.4	0.4	-	1.2
DB Regio	4.3	4.2	+	2.2
Total	4.7	4.6	+	1.9
Passenger kilometers (million pkm)				
DB Reise & Touristik	36,226	34,897	+	3.8
DB Regio	38,162	37,949	+	0.6
Total	74,387	72,846	+	2.1
Number of trains per day				
DB Reise & Touristik	1,557	1,441	+	8.0
DB Regio	28,995	29,036	-	0.1
Total	30,552	30,477	+	0.2
Train kilometers (million train-path km)				
DB Reise & Touristik	175.9	177.5	-	0.9
DB Regio	563.9	552.4	+	2.1
Total	739.8	729.9	+	1.4
Locomotives				
DB Reise & Touristik	420	456	-	7.9
DB Regio	2,252	2,478	-	9.1
Total	2,672	2,934	-	8.9
Rail cars incl. rail buses				
S-Bahn d.c.	2,022	2,084	-	3.0
S-Bahn a.c	2,076	1,504	+	38.0
Diesel railcars	2,001	1,543	+	29.7
Rail buses	216	235	-	8.1
Electric rail cars/ Electric multiple units (EMUs)	24	7	+	242.9
Total (only DB Regio)	6,339	5,373	+	18.0
Passenger cars				
DB Reise & Touristik	4,444	4,947	-	10.2
DB Regio	8,531	8,863	-	3.7
Total	12,975	13,810	-	6.0
Seats (thousands)				
DB Reise & Touristik	281	278	+	1.1
DB Regio	1,182	1,169	+	1.1
Total	1,463	1,447	+	1.1

DB Reise & Touristik

	2000	1999	Change in %
Rail transport performance			
Passengers (million)			
ICE	41.6	35.6	+ 16.9
IC/EC	48.0	51.8	- 7.3
IR/D-Day	59.8	64.7	- 7.6
Other products (incl. CNL, Metropolitan)	11.2	12.6	- 11.1
Total counted passengers	160.6	164.7	- 2.5
Multiple counts	- 15.8	- 18.2	+ 13.2
Total	144.8	146.5	- 1.2
Passengers per day (million)	0.40	0.40	- 1.2
Number of trains per day¹⁾	1,557	1,441	+ 8.0
Passenger kilometers (million pkm)			
ICE	13,925	11,591	+ 20.1
IC/EC	11,304	11,939	- 5.3
IR/D-Day	7,834	8,144	- 3.8
Other products (incl. CNL, Metropolitan)	3,163	3,223	- 1.9
Total	36,226	34,897	+ 3.8
Mean journey distance			
Total	250.2	238.2	+ 5.0
thereof ICE	334.7	325.6	+ 2.8
thereof IC/EC	235.5	230.5	+ 2.2
thereof IR/D-Day	131.0	125.9	+ 4.1
Train kilometers (million train-path km)	175.9	177.5	- 0.9
Locomotives			
Electric locomotives	420	456	- 7.9
Light rail locomotives	0	0	-
Total	420	456	- 7.9

¹⁾ Plus 116 trains are the result of extraordinary EXPO 2000 effects

	2000	1999	Change in %
Rolling stock			
ICE 1			
Number of power cars	120	120	–
Intermediate cars	705	705	–
thereof 1st class cars	195	195	–
thereof 2nd class cars	451	451	–
thereof restaurant cars	59	59	–
ICE 2			
Number of power cars	46	46	–
Number of driving trailers	45	45	–
Intermediate cars	264	264	–
thereof 1st class cars	88	88	–
thereof 2nd class cars	132	132	–
thereof restaurant cars	44	44	–
ICE T			
Number of multiple units	42	17	+ 147.1
Number of end cars	84	34	+ 147.1
Intermediate cars	190	67	+ 183.6
ICE 3			
Number of rail cars	132	–	–
thereof 1st class rail cars	66	–	–
thereof 2nd class rail cars	66	–	–
Number of trailer cars	132	–	–
thereof 1st class cars	33	–	–
thereof 2nd class cars	66	–	–
thereof restaurant cars	33	–	–
Passenger cars			
EC/IC	1,847	2,135	– 13.5
IR/D	1,518	1,613	– 5.9
Sleeping cars, couchette cars, Talgo (ICN)	631	669	– 5.7
Other passenger cars (incl. CNL)	448	530	– 15.5
Total	4,444	4,947	– 10.2
Seats			
1st class, total	59,436	56,071	+ 6.0
2nd class, total	221,936	221,452	+ 0.2
Total	281,372	277,523	+ 1.4
Automatic ticketing machines	2,894	1,526	+ 89.6

DB Regio

	2000	1999	Change in %	
Ordered services from federal states (€ million)	4,330.9	4,283.4	+	1.1
Rail transport performance				
Passengers (million)	1,568	1,534	+	2.2
Number of passengers per day (million)	4	4	+	2.2
Passenger kilometers (million pkm)	38,162	37,949	+	0.6
Number of trains per day	28,995	29,036	-	0.1
Mean journey distance	24.3	24.7	-	1.6
Train kilometers (million train-path km)	563.9	552.4	+	2.1
Locomotives				
Electric locomotives	1,493	1,569	-	4.8
Diesel locomotives	747	893	-	16.3
Steam locomotives	12	16	-	25.0
Total	2,252	2,478	-	9.1
Rolling stock				
S-Bahn d.c.	2,022	2,084	-	3.0
S-Bahn a.c.	2,076	1,504	+	38.0
Diesel rail cars	2,001	1,543	+	29.7
Rail buses	216	235	-	8.1
Electric rail cars/ Electric multiple units (EMUs)	24	7	+	242.9
Double-deck cars	1,637	1,551	-	5.5
Other passenger cars (incl. baggage cars)	6,894	7,312	-	5.7
Total	14,870	14,236	+	4.5
Seats				
1st class	84,217	79,337	+	6.2
2nd class (incl. folding seats)	1,097,808	1,089,344	+	0.8
Total	1,182,025	1,168,681	+	1.1
Automatic ticketing machines	6,178	5,576	+	10.8

Freight Transport ¹⁾

in € million	2000	1999	Change in %
External revenues	3,831	3,541	+ 8.2
Intra-Group revenues	816	632	+ 29.1
Divisional revenues	4,647	4,173	+ 11.4
Operating income after interest	49	- 11	-
Gross cash flow	259	171	+ 51.5
Gross capital expenditures	405	501	- 19.2
Employees (as of Dec 31, 2000)	38,555	40,995	- 6.0

	2000	1999	Change in %
Rail transport performance			
Freight carried (million t)	301.3	279.3	+ 7.9
Ton kilometers (million tkm)	80,634	71,494	+ 12.8
Number of trains per day	~ 6,219	~ 6,500	-
Mean transport distance	267.7	256.0	+ 4.6
Train kilometers (million train-path km)	225.5	220.3	+ 2.4
Locomotives			
Electric locomotives	1,601	1,518	+ 5.5
Diesel locomotives	1,501	1,415	+ 6.1
Light rail locomotives	1,262	1,408	- 10.4
Diesel multiple units (DMUs)	7	7	0.0
Total	4,371	4,348	- 2.5
Covered wagons	33,169	32,498	+ 2.1
Open wagons	40,406	40,961	- 1.4
Flat wagons	55,895	53,642	+ 4.2
Tank wagons	1,708	1,857	- 8.0
Total	131,178	128,958	+ 1.7
Leased wagons	5,510	5,095	+ 8.1
Privately owned wagons registered	60,611	58,787	+ 3.1
Transport capacity of freight wagons (thousand t)			
Covered wagons	1,070	987	+ 8.4
Open wagons	1,970	1,813	+ 8.7
Flat wagons	2,757	2,397	+ 15.0
Tank wagons	49	53	- 6.3
Total	5,847	5,249	+ 11.4

¹⁾ From 2000 on incl. Railion Benelux

Passenger Stations

in € million	2000	1999	Change in %
External revenues	200	184	+ 8.7
Intra-Group revenues	600	582	+ 3.1
Divisional revenues	800	766	+ 4.4
Operating income after interest	4	0	-
Gross cash flow	111	93	+ 19.4
Gross capital expenditures	552	554	- 0.4
Employees (as of Dec 31, 2000)	5,015	5,593	- 10.3

	2000	1999	Change in %
Number of passenger stations	5,794	5,876	- 1.4
Number of train stops per day (thousand)	~ 400	~ 400	-

Real Estate

in € million	2000	1999	Change in %
External revenues	10	8	+ 25.0
Intra-Group revenues	74	74	-
Divisional revenues	84	82	+ 2.4
Operating income after interest	108	- 385	-
Gross cash flow	163	- 320	-
Gross capital expenditures	51	53	- 3.8
Employees (as of Dec 31, 2000)	1,293	1,286	+ 0.5

Track Infrastructure

in € million	2000	1999	Change in %
External revenues	110	83	+ 32.5
Intra-Group revenues	3,415	3,354	+ 1.8
Divisional revenues	3,525	3,437	+ 2.6
Operating income after interest	57	11	+ 418.2
Gross cash flow	987	916	+ 7.8
Gross capital expenditures	3,896	4,782	- 18.5
Employees (as of Dec 31, 2000)	53,554	57,629	- 7.1

	2000	1999	Change in %
Train kilometers (million train-path km)	984.2	976.6	+ 0.8
thereof internal customers	957.1	954.5	+ 0.3
thereof external customers	27.1	22.1	+ 22.6
Length of line operated (km)			
Standard gauge	36,538	37,476	- 2.5
Narrow gauge	50	49	+ 1.9
Total	36,588	37,525	- 2.5
thereof in electrified operations	19,079	18,934	+ 0.8
Length of all track (km)	64,821	67,357	- 3.8
Number of switches/crossings	93,928	97,319	- 3.5
Number of stations	4,528	4,667	- 3.0
Number of stopping points	3,031	2,998	+ 1.1
Interlockings			
Total	6,415	6,477	- 1.0
thereof electronic	122	104	+ 17.3
Level crossings			
Total	25,941	26,480	- 2.0
thereof technically protected	11,128	11,337	- 1.8
Tunnels			
Subterranean	665	659	+ 0.9
Above ground	179	179	+ 0.0
Total	844	838	+ 0.7
Total length (km)	442.3	441.3	+ 0.2
Length of longest tunnel (m)	10,779	10,779	-
Railway bridges	32,933	32,933	-
Private sidings	5,724	6,252	- 8.4

Major Subsidiaries Deutsche Bahn Group

Name and domicile
Group division Passenger Transport
Long-distance Passenger Transport (DB Reise & Touristik)
DB Reise & Touristik AG, Frankfurt a. M.
Ameropa-Reisen GmbH, Bad Homburg v. d. H.
Bayern Express & P. Kühn Berlin GmbH, Berlin
CityNightLine CNL AG, Zürich
Deutsche Touring Gesellschaft mbH, Frankfurt a. M.
Metropolitan Express-Train GmbH, Bad Homburg v. d. H.
MITROPA Mitteleuropäische Schlafwagen und Speisewagen Aktiengesellschaft, Berlin
Local Passenger Transport (DB Regio)
DB Regio AG, Frankfurt a. M.
BRN Busverkehr Rhein-Neckar GmbH, Ludwigshafen
Burgenlandbahn GmbH, Zeitz
DB Regionalbahn Rhein-Ruhr GmbH, Essen
DB Regionalbahn Rheinland, Köln
BVR Busverkehr Rheinland GmbH, Düsseldorf
DB ZugBus Regionalverkehr Alb-Bodensee GmbH (RAB), Ulm
DB Regionalbahn Westfalen GmbH, Münster
WB Westfalen Bus GmbH, Münster
BVO Busverkehr Ostwestfalen GmbH, Bielefeld
Omnibusverkehr Franken GmbH (OFV), Nürnberg
ORN Omnibusverkehr Rhein Nahe GmbH, Mainz
RBO Regionalbus Ostbayern GmbH, Regensburg
Regional Bus Stuttgart GmbH, Stuttgart
Regionalbus Braunschweig GmbH – RBB –, Braunschweig
Regionalverkehr Kurhessen GmbH, Kassel
Regionalverkehr Oberbayern GmbH, München
RMV Rhein-Mosel Verkehrsgesellschaft mbH, Koblenz
RSW Regionalbus Saar-Westpfalz GmbH, Saarbrücken
RVS Regionalbusverkehr Südwest GmbH, Karlsruhe
S-Bahn Berlin GmbH, Berlin
S-Bahn Hamburg GmbH, Hamburg
SBG SüdbadenBus GmbH, Freiburg
Verkehrsgesellschaft mbH Untermain –VU–, Frankfurt a. M.
Weser-Ems Busverkehr GmbH (WEB), Bremen
Regionalbahn Schleswig-Holstein GmbH, Kiel
Autokraft GmbH, Kiel

Owner- ship in %	Equity in € million	Revenues 2000 in € million	Net income 2000 in € million	Employees as of Dec 31, 2000
100.0	2,045.2	3,131.2	– 1)	23,489
100.0	2.6	101.2	– 1)	119
100.0	4.1	21.3	– 1)	205
100.0	18.1	36.5	3.8	11
82.8	7.7	51.5	2.7	162
100.0	4.3	16.0	– 1)	11
100.0	14.2	302.0	0.0	4,756
100.0	1,764.0	4,950.8	– 1)	33,969
100.0	13.3	48.5	– 1)	397
70.0	0.3	14.6	0.2	0
100.0	126.1	496.7	– 1)	2,283
100.0	68.6	278.3	– 1)	1,205
100.0	4.2	56.9	– 1)	258
100.0	24.0	187.2	– 1)	565
100.0	35.5	279.4	– 1)	1,277
100.0	6.0	52.7	– 1)	339
100.0	11.2	57.6	– 1)	419
100.0	13.3	81.5	– 1)	455
100.0	5.1	39.7	– 1)	307
100.0	9.8	52.6	– 1)	272
100.0	15.9	72.3	– 1)	502
100.0	3.6	38.3	– 1)	282
100.0	10.7	55.7	– 1)	500
100.0	10.8	51.0	– 1)	617
74.9	15.5	54.1	5.0	220
100.0	9.4	53.9	– 1)	324
100.0	7.2	52.9	– 1)	348
100.0	165.2	449.2	– 1)	4,213
100.0	62.3	159.8	– 1)	1,124
100.0	6.6	70.5	– 1)	424
100.0	3.8	52.9	– 1)	311
100.0	10.2	53.1	– 1)	328
100.0	10.5	224.1	– 1)	932
100.0	10.1	65.3	1.4	656

Name and domicile
Group division Freight Transport
DB Cargo AG, Mainz
Railion Benelux N.V., Utrecht ²⁾
ATG Autotransportlogistic GmbH, Eschborn/Taunus
BTT BahnTank Transport GmbH, Mainz
DB Verkehrsbau Logistik GmbH, Mainz
NUCLEAR CARGO + SERVICE GmbH, Hanau
TRANSA Spedition GmbH, Offenbach a. M.
Transfracht Internationale Gesellschaft für kombinierten Güterverkehr mbH, Frankfurt a. M.
Group division Passenger Stations
DB Station & Service AG, Frankfurt a. M.
Group division Track Infrastructure
DB Netz AG, Frankfurt a. M. ³⁾
Group division Real Estate
Deutsche Bahn Immobiliengesellschaft mbH, Frankfurt a. M.
Other Subsidiaries
DB Anlagen und Haus Service GmbH, Berlin
DB Energie GmbH, Frankfurt a. M.
DB FuhrparkService GmbH, Frankfurt a. M.
DB Informatik-Dienste GmbH, Erfurt
DB TankService GmbH, Erfurt
DE-Consult, Deutsche Eisenbahn Consulting GmbH, Berlin
Deutsche Eisenbahn-Reklame GmbH, Kassel
Deutsche Bahn Gleisbau GmbH, Duisburg
Deutsche Gleis- und Tiefbau GmbH, Berlin
Ibb Ingenieur-, Brücken- und Tiefbau GmbH, Dresden
DVA Deutsche Verkehrs-Assekuranz-Vermittlungs-GmbH, Bad Homburg v. d. H.
BRG Bahnreinigung Frankfurt a. M. GmbH, Frankfurt a. M.
BRG Bahnreinigung Hamburg GmbH, Hamburg
BRG Bahnreinigung München GmbH, München
BRG Bahnreinigung Köln GmbH, Köln
BRG Bahnreinigung Karlsruhe GmbH, Karlsruhe
BRG Bahnreinigung Berlin GmbH, Berlin
Mitteldeutsche Bahnreinigung GmbH, Leipzig
BSG Bahn Schutz & Service GmbH, Frankfurt a. M.
TLC Transport-, Informatik- und Logistik-Consulting GmbH, Berlin

1) Profit and loss transfer agreement

2) First time consolidation in 2000

Owner-ship in %	Equity in € million	Revenues 2000 in € million	Net income 2000 in € million	Employees as of Dec 31, 2000
100.0	434.6	3,508.7	- 1)	35,996
100.0	64.6	144.2	- 3.5	1,409
75.0	3.5	266.1	2.4	41
100.0	1.5	25.6	- 1)	30
95.0	2.6	215.6	0.0	124
100.0	6.7	22.5	1.6	69
50.0	9.6	203.3	2.7	323
100.0	0.5	206.4	- 1)	174
100.0	1,201.5	800.3	- 1)	4,958
100.0	4,422.7	3,473.0	- 1)	56,938
100.0	0.5	73.7	- 1)	1,224
100.0	2.6	347.0	- 1)	4,992
100.0	527.7	753.8	- 1)	616
90.0	3.5	128.1	- 1)	124
100.0	212.5	401.8	- 1)	855
100.0	1.2	427.3	- 1)	191
74.0	20.1	109.2	- 0.5	1,003
100.0	5.5	145.6	- 1)	238
100.0	7.5	73.8	- 1)	326
100.0	0.3	176.7	- 1)	1,438
100.0	2.0	52.8	- 1)	276
65.0	1.0	17.7	10.9	61
100.0	0.9	25.1	0.7	693
51.0	2.6	48.4	2.1	1,392
51.0	1.1	48.7	0.6	1,171
51.0	1.9	48.4	1.4	1,221
51.0	2.0	34.6	1.7	707
51.0	1.7	61.2	1.2	2,099
100.0	0.3	55.5	- 1)	2,103
100.0	0.2	99.2	- 1)	3,053
100.0	1.9	247.5	- 1)	1,135

³⁾ DB Netz AG as a legal entity (in segment information according to internal reporting without "Bahnbau"-activities)

Supervisory Board of Deutsche Bahn AG

Dr. Günther Saßmannshausen

Honorary Chairman
of the Supervisory Board,
Hannover

Dr. Michael Frenzel

Chairman of the Supervisory Board,
– since March 14, 2001 –
– Member of the Supervisory Board
since July 5, 2000 –
Chairman of the Management Board
of Preussag AG,
Burgdorf

Dr. Dieter H. Vogel

Chairman of the Supervisory Board,
– until March 7, 2001 –
Managing Partner
Bessemer Vogel & Treichl GmbH,
Düsseldorf

Norbert Hansen*

Deputy Chairman
of the Supervisory Board,
Chairman of TRANSNET German
Railway Workers' Union,
Frankfurt/Main

Christian Bormann*

Chairman of the Works Council
of DB Netz AG,
Leipzig branch, location Erfurt,
Erfurt
– until July 5, 2000 –

Niels Lund Chrestensen

General Manager
of the N.L. Chrestensen,
Erfurter Samen-
und Pflanzenzucht GmbH,
Erfurt

Peter Debuschewitz*

Management Representative
for Berlin of Deutsche Bahn AG,
Taufkirchen
– since July 5, 2000 –

Elke Ferner

Former State Secretary
Ministry of Transport, Building
and Housing,
Saarbrücken
– until February 5, 2001 –

Horst Fischer*

Member of the Works Council
of DB Regio AG,
Regional division Northern Bavaria,
Fürth

Dr.-Ing. E.h. Dipl.-Ing.

Hermann Franz

Former Chairman of the Supervisory
Board of Siemens AG,
Erlangen
– until July 5, 2000 –

Horst Hartkorn*

Chairman of the Works Council
of S-Bahn Hamburg GmbH,
Hamburg

Marlies Helling*

Personnel Manager DB Netz AG,
Oberursel
– until July 5, 2000 –

Jörg Hensel*

Chairman of the Central Works
Council of DB Cargo AG,
Hamm
– since July 5, 2000 –

Günter Kirchheim*

Chairman of the Group Works
Council of Deutsche Bahn AG,
Chairman of the Central Works
Council of DB Netz AG,
Essen

Dr. rer. nat. Hermann Krämer

Former Member of the
Management Board of VEBA AG,
Seevetal

– until July 5, 2000 –

Lothar Krauß*

Deputy Chairman of TRANSNET
German Railway Workers' Union,
Rodenbach

Dr. h.c. Helmut O. Maucher

Honorary President Nestlé S.A.,
Frankfurt/Main

– until July 5, 2000 –

Heike Moll*

Member of the Central Works
Council of DB Station & Service AG,
Frankfurt/Main

– since July 5, 2000 –

Ralf Nagel

State Secretary Ministry of
Transport, Building and Housing,
Magdeburg

– since February 5, 2001 –

Dr. h.c. Friedel Neuber

President and CEO
of Westdeutsche Landesbank
Girozentrale,
Düsseldorf

Günter Ostermann*

Deputy Chairman of TRANSNET
German Railway Workers' Union,
Wunstorf

Dr. Manfred Overhaus

State Secretary Ministry of Finance,
St. Augustin

Manfred Probst*

Deputy Chairman of the Works
Council of DB Netz AG,
Bad Überkingen

– until July 5, 2000 –

Albert Schmidt

Member of Parliament (Bundestag),
Ingolstadt

Rolf Schökel*

Chairman of the Works Council of
DB Reise & Touristik AG,
Hannover branch,
Hildesheim

– until July 5, 2000 –

Dr. Ulrich Schumacher

Chairman of the Management Board
of Infineon Technologies AG,
Starnberg

– since July 5, 2000 –

Dr. Alfred Tacke

State Secretary Ministry
of Economics and Technology,
Celle

Heinrich Weiss

Chairman of the Management Board
of SMS AG,
Hilchenbach-Dahlbruch

– since July 5, 2000 –

Horst Zimmermann*

Chairman of the Central Works
Council of DB Reise & Touristik AG,
Nürnberg

– since July 5, 2000 –

* Employee representative
on the Supervisory Board

Management Board of Deutsche Bahn AG

Hartmut Mehdorn

CEO and Chairman of the
Management Board,
Berlin

Klaus Daubertshäuser¹⁾

Marketing,
Wettenberg

Dr. Horst Föhr

Personnel,
Berlin

Dr. Christoph Franz¹⁾

Passenger Transport,
CEO and Chairman of the
Management Board of
DB Reise & Touristik AG,
CEO and Chairman of the
Management Board of DB Regio AG,
Darmstadt

Wolfgang Gemeinhardt

Purchasing,
Usingen
– until December 31, 2000 –

Roland Heinisch²⁾

Track Infrastructure/Integrated
Systems,
CEO and Chairman of the
Management Board of DB Netz AG,
Idstein

Dr. Bernd Malmström

Freight Transport,
CEO and Chairman of the
Management Board of DB Cargo AG,
Mainz
– since May 1, 2000 –

Peter Münchschwander

Track Infrastructure,
CEO and Chairman of the
Management Board of DB Netz AG,
Bad Homburg
– until August 31, 2000 –

Dr. Karl-Friedrich Rausch

Technology,
Weiterstadt
– since Januar 1, 2001 –

Diethelm Sack

Chief Financial Officer,
Frankfurt/Main

Dr. Eberhard Sinnecker

Freight Transport,
CEO and Chairman of the
Management Board of DB Cargo AG,
Darmstadt
– until June 30, 2000 –

Dieter Ullsperger

Passenger Stations/Real Estate,
CEO and Chairman of the
Management Board of
DB Station & Service AG,
Much

1) Mr. Daubertshäuser left the Management Board of DB Regio on March 31, 2000 and took a position on DB AG's Management Board with responsibility for the newly-formed Marketing Board Division as of April 1, 2000. Dr. Franz also took the chair of DB Regio AG's Management Board on April 1, 2000

2) Mr. Heinisch was responsible for Technology until August 31, 2000. He became responsible for Track Infrastructure/Integrated Systems and took the chair of DB Netz AG's Management Board on September 1, 2000.

Contact Addresses

Management Representatives for the Federal States

Baden-Württemberg

Dr.-Ing. Peter Schnell

Heilbronner Straße 7
D-70174 Stuttgart
Germany
Phone +49 (0) 711 20 92-33 00
Fax +49 (0) 711 20 92-36 00

Bayern

**Hermann Graf von der
Schulenburg**

Richelstraße 3
D-80634 München
Germany
Phone +49 (0) 89 13 08-33 00
Fax +49 (0) 89 13 08-19 11

Berlin

Peter Debuschewitz

Granitzstraße 55-56
D-13189 Berlin
Germany
Phone +49 (0) 30 2 97-4 0100
Fax +49 (0) 30 2 97-4 09 10

Brandenburg

Dr.-Ing. Joachim Trettin

Im Hauptbahnhof Potsdam
D-14473 Potsdam
Germany
Phone +49 (0) 331 2 35-73 00
Fax +49 (0) 331 2 35-73 19

Hansestadt Bremen

Hans-Jürgen Meyer

Joachimstraße 8
D-30159 Hannover
Germany
Phone +49 (0) 511 2 86-33 00
Fax +49 (0) 511 2 86-41 31

Freie und Hansestadt Hamburg

Reiner Latsch

Museumstraße 39
D-22765 Hamburg
Germany
Phone +49 (0) 40 39 18-30 00
Fax +49 (0) 40 39 18-30 06

Hessen

Dr. Rudolf Göbertshahn

Weilburger Straße 22
D-60326 Frankfurt/Main
Germany
Phone +49 (0) 69 2 65-2 47 00
Fax +49 (0) 69 2 65-2 47 09

Mecklenburg- Vorpommern

Horst Gibtnier

Zum Bahnhof 15
D-19053 Schwerin
Germany
Phone +49 (0) 385 7 50-33 00
Fax +49 (0) 385 7 50-33 49

Niedersachsen

Hans-Jürgen Meyer

Joachimstraße 8
D-30159 Hannover
Germany
Phone +49 (0) 511 2 86-33 00
Fax +49 (0) 511 2 86-41 31

Nordrhein-Westfalen

Wolfgang Maurer

Immermannstr. 65c
D-40210 Düsseldorf
Germany
Phone +49 (0) 211 17 93-76 10
Fax +49 (0) 211 17 93-76 40

Rheinland-Pfalz**Dr. Rudolf Göbertshahn**

Weilburger Straße 22
 D-60326 Frankfurt/Main
 Germany
 Phone +49 (0) 69 2 65-2 47 00
 Fax +49 (0) 69 2 65-2 47 09

Saarland**Dr. Rudolf Göbertshahn**

Weilburger Straße 22
 D-60326 Frankfurt/Main
 Germany
 Phone +49 (0) 69 2 65-2 47 00
 Fax +49 (0) 69 2 65-2 47 09

Sachsen**Hans-Jürgen Lücking**

Ammonstraße 8
 D-01069 Dresden
 Germany
 Phone +49 (0) 351 4 61-33 00
 Fax +49 (0) 351 4 61-27 03

Sachsen-Anhalt**Jobst Paul**

Ernst-Kamieth-Straße 2
 D-06112 Halle
 Germany
 Phone +49 (0) 345 2 15-33 00
 Fax +49 (0) 345 2 15-33 88

Schleswig-Holstein**Reiner Latsch**

Museumstraße 39
 D-22765 Hamburg
 Germany
 Phone +49 (0) 40 39 18-30 00
 Fax +49 (0) 40 39 18-30 06

Thüringen**Gerold Brehm**

Bahnhofstraße 23
 D-99084 Erfurt
 Germany
 Phone +49 (0) 361 30 33 00
 Fax +49 (0) 361 5 62 40 87

Investor Relations

Deutsche Bahn AG
 Investor Relations
 Potsdamer Platz 2
 D-10785 Berlin
 Germany
 Fax +49 (0) 30 2 97-6 19 61
 E-Mail investor.relations@bku.db.de

Karsten Nagel

Head of Investor Relations
 Phone +49 (0) 30 2 97-6 16 78

Communications

Deutsche Bahn AG
 Communications
 Potsdamer Platz 2
 D-10785 Berlin
 Germany
 Fax +49 (0) 30 2 97-6 19 19
 E-Mail medienbetreuung@bku.db.de

Uwe Herz

Deputy Spokesman of
 Deutsche Bahn AG
 Phone +49 (0) 30 2 97-6 11 28

Kornelia Kneissl

Group Division Passenger Transport
 Stephensonstraße 1
 D-60326 Frankfurt/Main
 Germany
 Phone +49 (0) 69 2 65-77 07

Dieter Hünerkoch

Head of Communications
 Phone +49 (0) 30 2 97-6 11 30

Dirk Große-Leege

Deputy Head of Communications
 Spokesman of Deutsche Bahn AG
 Phone +49 (0) 30 2 97-6 11 80

Sabine Großkopf

Group Division Freight Transport
Rheinstraße 2
D-55116 Mainz
Germany
Phone +49 (0) 6131 15-6 02 00

Ariane Alzer

Group Divisions
Passenger Stations
Real Estate
Weilburger Straße 22
D-60326 Frankfurt/Main
Germany
Phone +49 (0) 69 2 65-2 45 60

Hans-Georg Kuszniir

Group Division Track Infrastructure
Theodor-Heuss-Allee 7
D-60486 Frankfurt/Main
Germany
Phone +49 (0) 69 2 65-3 20 00

Christine Geißler-Schild

Research and Technology
Phone +49 (0) 30 2 97-6 1168

Irene Liebau

Head of Public Relations
Phone +49 (0) 30 2 97-6 13 36

Burkhard Tewinkel

Head of Internal Communications
Phone +49 (0) 30 2 97-6 1141

Joe Müller

Head of Advertising,
Marketing Communications,
Cooperations/Sponsoring
Phone +49 (0) 30 2 97-6 1189

Press Spokespersons in the Regions**Baden-Württemberg****Stuttgart****Ursula Eickhoff**

Heilbronner Straße 7
D-70174 Stuttgart
Germany
Phone +49 (0) 711 20 92-34 98
Fax +49 (0) 711 20 92-33 03

Bayern**München****Franz Lindemaier**

Richelstraße 3
D-80634 München
Germany
Phone +49 (0) 89 13 08-14 98
Fax +49 (0) 89 13 08-19 01

Berlin/Brandenburg**Berlin****Gunnar Meyer**

Holzmarktstraße 17
D-10880 Berlin
Germany
Phone +49 (0) 30 2 97-5 32 15
Fax +49 (0) 30 2 97-5 32 16

Hamburg**Egbert Meyer-Lovis**

Museumstraße 39
D-22765 Hamburg
Germany
Phone +49 (0) 40 39 18-44 98
Fax +49 (0) 40 39 18-44 19

Hessen/Rheinland-Pfalz/**Saarland****Frankfurt am Main****Gerd Felser**

Weilburger Straße 22
D-60326 Frankfurt/Main
Germany
Phone +49 (0) 69 2 65-2 49 11
Fax +49 (0) 69 2 65-2 49 15

Standort Saarbrücken**Horst Rohrbacher**

Am Hauptbahnhof 4
D-66111 Saarbrücken
Germany
Phone +49 (0) 681 3 08-34 98
Fax +49 (0) 681 3 08-33 01

Press Spokespersons in the Regions

Mecklenburg-Vorpommern

Schwerin

Edith Vahl

Zum Bahnhof 15

D-19053 Schwerin

Germany

Phone +49 (0) 385 7 50-33 08

Fax +49 (0) 385 7 50-33 09

Sachsen

Dresden

Kerstin Eckstein

Ammonstraße 8

D-01069 Dresden

Germany

Phone +49 (0) 351 4 61-33 08

Fax +49 (0) 351 4 61-27 08

Niedersachsen/Bremen

Hannover

Hans-Jürgen Frohns

Joachimstraße 8

D-30159 Hannover

Germany

Phone +49 (0) 511 2 86-34 98

Fax +49 (0) 511 2 86-33 45

Sachsen-Anhalt/

Thüringen

Halle

Burkhard Ahlert

Ernst-Kamieth-Straße 2

D-06112 Halle

Germany

Phone +49 (0) 345 215-33 08

Fax +49 (0) 345 215-43 25

Nordrhein-Westfalen

Düsseldorf

Manfred Pietschmann

Immermannstraße 65c

D-40210 Düsseldorf

Germany

Phone +49 (0) 211 17 93-76 50

Fax +49 (0) 211 17 93-76 55

Imprint

Financial information can be requested from Investor Relations:

Phone +49 (0) 30 2 97-6 16 76
Fax +49 (0) 30 2 97-6 19 61
E-Mail investor.relations
@bku.db.de

The Annual Report and additional information are available on the Internet:

<http://www.bahn.de>

Deutsche Bahn AG
Potsdamer Platz 2
D-10785 Berlin
Germany

**This Facts and Figures are
published in German and
English. In case of any
discrepancies, the German
version shall prevail.**

Design concept

Hilger & Boie, Wiesbaden

Production coordination

Mentor Werbeberatung
H.-J. Dietz, Kelkheim

Typesetting

medienhaus:frankfurt,
Frankfurt/Main

Lithography

Koch Lichtsatz & Scan,
Wiesbaden

Printing

Color-Druck, Leimen

Deutsche Bahn AG

Potsdamer Platz 2
D-10785 Berlin
Germany

<http://www.bahn.de>