



**Deutsche Bahn**  
Facts & Figures 2023

---



# CONTENTS

## **1 Strong Rail top targets**

### **3 DB Group**

- 3 Management Board of Deutsche Bahn AG
- 4 Supervisory Board of Deutsche Bahn AG
- 4 Organizational structure of Deutsche Bahn Group

### **5 Key figures and ratings**

- 5 Quality figures
- 6 Performance figures
- 7 Financial figures
- 11 Social
- 14 Environmental
- 15 Ratings

### **16 Figures by business units**

- 16 Overview passenger transport
- 18 DB Long-Distance
- 20 DB Regional
- 21 DB Cargo
- 23 DB InfraGO
- 26 DB Energy
- 27 DB Schenker

### **28 10-year summaries**

- 28 Rail performance figures
- 28 Employees
- 30 Statement of income
- 30 Operating profit figures/  
Key economic performance indicators
- 32 Cash flow/Capital expenditures
- 32 Balance sheet
- 34 Strong Rail top targets

### **35 Contact information**

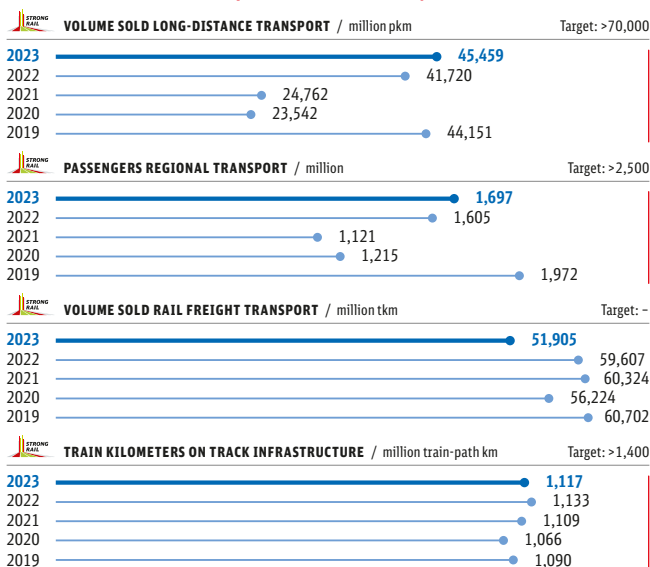
- 35 Investor Relations and Sustainable Finance
- 35 Communications
- 35 Service numbers
- 36 Management representatives  
for the Federal states

### **Cover**

- U2 Contents
- U3 Financial calendar

# STRONG RAIL TOP TARGETS

## Shift in the mode of transport (rail in Germany)

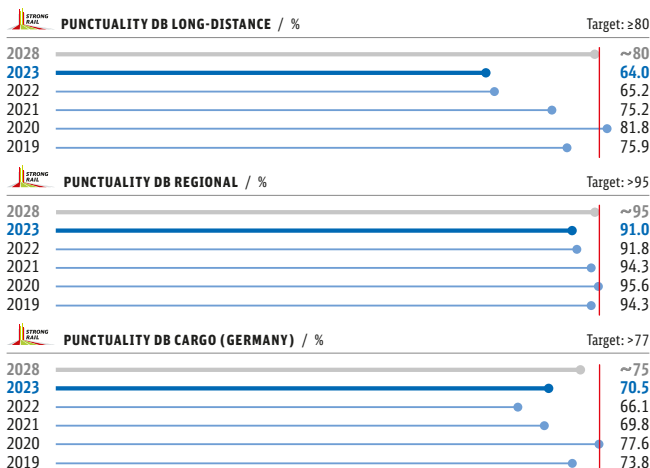


## Customer satisfaction (rail in Germany)

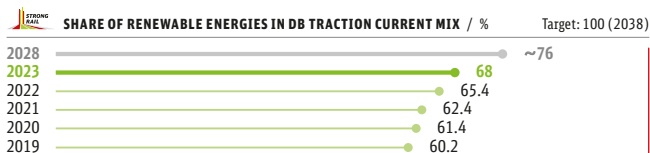


—● Short-term/mid-term target — Long-term target

## Punctuality (rail in Germany)



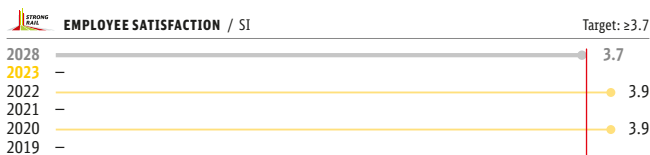
## Environmental (rail in Germany)



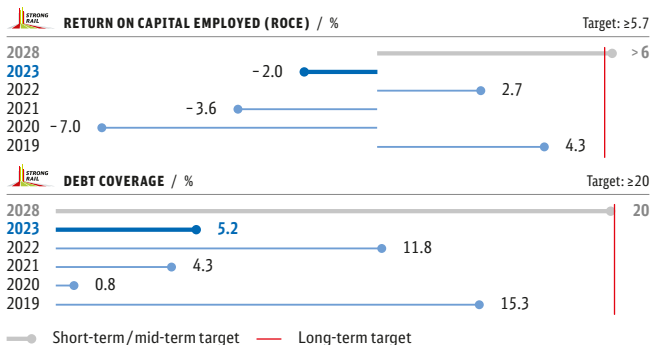
The data for 2023 represents a forecast as of February 2024.

Since 2023 the share of renewable energies is presented separately without support from the Renewable Energy Sources Act (Erneuerbare-Energien-Gesetz; EEG).

## Social



## Economic



# DB GROUP

## Management Board of Deutsche Bahn AG



From left to right:

**MARTIN SEILER** Human Resources and Legal Affairs

**EVELYN PALLA** Regional Transport

**BERTHOLD HUBER** Infrastructure

**DR. RICHARD LUTZ** Chairman and CEO

**DR. SIGRID NIKUTTA** Freight Transport

**DR. LEVIN HOLLE** Finance and Logistics

**DR. DANIELA GERD TOM MARKOTTEN** Digitalization and Technology

**DR. MICHAEL PETERSON** Long-Distance Passenger Transport



Information regarding CVs at:  
[db.de/management-board](https://www.db.de/management-board) 



## Supervisory Board of Deutsche Bahn AG

Werner Gatzler  
Chairman of the  
Supervisory Board

Martin Burkert\*  
Deputy Chairman  
of the Supervisory Board

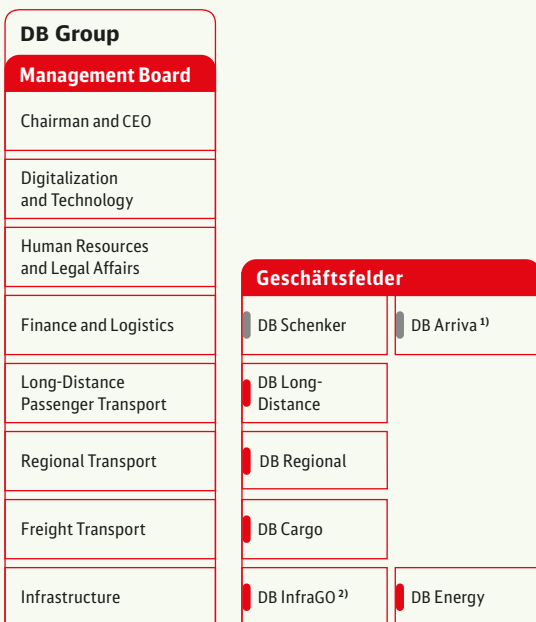
Ralf Damde\*  
Stefan Gelbhaar

Anja Hajduk  
Susanne Henckel  
Jörg Hensel\*  
Cosima Ingenschay\*  
Alexander Kaczmarek\*  
Prof. Dr. Susanne Knorre  
Dorothee Martin  
Daniela Mattheus  
Heike Moll\*  
Michael Puschel

Dr. Immo Querner  
Bernd Reuther  
Manfred Scholze\*  
Klaus-Peter Schölzke\*  
Jens Schwarz\*  
Veit Sobek\*

\* Employees' representative  
on the Supervisory Board.  
As of March 2024.

## Organizational structure of Deutsche Bahn Group



● Major investments

● Integrated Rail System

<sup>1)</sup> There is an agreement regarding the sale of DB Arriva. Due to the expected disposal, DB Arriva is reported as discontinued operations.

<sup>2)</sup> In 2023 the DB Netze Track and DB Netze Stations business units were reported separately for the last time.

# KEY FIGURES AND RATINGS

## Quality figures

<b>PUNCTUALITY / %</b>	<b>2023</b>	2022	2021
DB Group in Germany (rail)	90.1	90.9	93.7
DB rail passenger transport in Germany	90.3	91.0	93.8
DB Long-Distance	64.0	65.2	75.2
DB Regional	91.0	91.8	94.3
DB Cargo (Germany)	70.5	66.1	69.8
DB Regional (bus)	85.2	86.0	83.9
DB Cargo	69.7	66.3	69.5
Punctuality (whole journey) (DB Long-Distance)	68.9	69.3	76.8

To measure punctuality, we compare the target arrival time to the actual arrival time for every train/bus run. We summarize the arrival of trains/buses on schedule or up to a defined maximum delay using a degree of punctuality.

<b>PRODUCT QUALITY RAIL INFRASTRUCTURE IN GERMANY / %</b>	<b>2023</b>	2022	2021
Punctuality in Germany <sup>1)</sup>	88.9	89.7	92.9
Condition grade total network (grade)	3.0	3.0	2.9
Facilities quality (passenger stations) (grade)	2.77 <sup>2)</sup>	2.77 <sup>2)</sup>	2.77
Supply reliability (energy)	99.99 <sup>3)</sup>	99.99 <sup>3)</sup>	99.99

<sup>1)</sup> Non-Group and DB Group train operating companies.

<sup>2)</sup> Preliminary figure.

<sup>3)</sup> Preliminary figure (not rounded).

<b>CUSTOMER SATISFACTION / grade</b>	<b>2023</b>	2022	2021
DB Long-Distance	2.7	2.7	2.5
DB Regional (rail)	2.2	2.2	2.0
DB Regional (bus)	2.0	2.2	2.1
DB Cargo	2.8	2.7	2.5
DB Netze Track	3.6	3.3	3.0
DB Netze Stations			
Stations (passenger/visitors)	2.5	2.4	2.4
Stations (TOCs, transport authorities and Federal states)	2.8	2.6	2.6
Tenants	2.2	2.1	2.1
DB Energy	2.1	2.1	2.1
Traction current and diesel	2.3	2.4	2.2
Electricity and gas plus (DB Group customers)	2.1	2.1	2.0
DB Schenker	2.2	2.5	2.6

As part of the development of the Strong Rail strategy, we have changed the presentation of customer satisfaction to grades. This reflects customer satisfaction on a scale from 1 (very satisfied) to 6 (very dissatisfied). At the same time, the customer satisfaction figures for DB Long-Distance and DB Regional (rail) have been aligned even more closely with the customer experience.

## Performance figures

	2023	2022	± absolute	±%
<b>PASSENGER TRANSPORT</b>				
Passengers (million)	2,385	2,205	+180	+8.2
Passengers per day (million)	6.5	6.0	+0.5	+8.3
<b>RAIL</b>				
Passengers (million)	1,837	1,737	+100	+5.8
thereof DB Long-Distance	140.3	132.0	+8.3	+6.3
Passengers per day (million)	5.0	4.8	+0.2	+4.2
Volume sold (million pkm <sup>1)</sup> )	82,943	76,475	+6,468	+8.5
Volume produced (million train-path km <sup>2)</sup> )	578.0	592.7	-14.7	-2.5
Trains per day	24,325	23,325	+1,000	+4.3
<b>BUS</b>				
Passengers (million)	547.8	468.2	+79.6	+17.0
Passengers per day (million)	1.5	1.3	+0.2	+15.4
Volume sold <sup>3)</sup> (million pkm <sup>1)</sup> )	6,024	5,062	+962	+19.0
Volume produced (million bus km <sup>3)</sup> )	530.8	503.8	+27.0	+5.4
<b>RAIL FREIGHT TRANSPORT</b>				
Freight carried (million t)	197.6	222.3	-24.7	-11.1
thereof German subsidiaries	163.7	185.6	-21.9	-11.8
Volume sold (million tkm <sup>4)</sup> )	74,458	84,468	-10,010	-11.9
thereof German subsidiaries	51,905	59,607	-7,702	-12.9
Volume produced (million train-path km <sup>2)</sup> )	146.9	169.1	-22.2	-13.1
Trains per day	2,267	2,632	-365	-13.9
Mean transport distance (km)	376.8	380.0	-3.2	-0.8
Capacity utilization (t per train)	506.7	499.4	+7.3	+1.5
<b>FREIGHT FORWARDING AND LOGISTICS</b>				
Shipments in land transport (million)	100.8	102.8	-2.0	-1.9
Air freight volume (export) (thousand t)	1,148	1,326	-178	-13.4
Ocean freight volume (export) (thousand TEU)	1,783	1,909	-126	-6.6
Warehouse space contract logistics (million m <sup>2</sup> )	8.5	8.6	-0.1	-1.2
<b>INFRASTRUCTURE</b>				
Train kilometers on track infrastructure (million train-path km <sup>2)</sup> )	1,118	1,133	-15	-1.3
thereof non-Group railways	437.8	419.8	+18.0	+4.3
Station stops (million)	159.6	159.8	-0.2	-0.1
thereof non-Group railways	47.8	45.1	+2.7	+6.0

Excluding DB Arriva.

<sup>1)</sup> Passenger kilometers: product of number of passengers and mean travel distance.

<sup>2)</sup> Train-path kilometers: driving performance in km of trains on rail.

<sup>3)</sup> Bus kilometers: driving performance in km of buses on road.

<sup>4)</sup> Ton kilometers: product of freight carried and mean transport distance.



## Financial figures

€ million	2023	2022	± absolute	±%
<b>PROFIT SITUATION</b>				
Revenues	45,191	52,085	- 6,894	- 13.2
Revenues comparable	45,245	51,790	- 6,545	- 12.6
Profit/loss before taxes on income	- 1,959	1,090	- 3,049	-
Net loss for the year	- 2,351	- 227	- 2,124	-
EBITDA adjusted	2,877	4,783	- 1,906	- 39.8
EBIT adjusted	- 964	1,225	- 2,189	-
<b>FINANCIAL AND ASSET SITUATION AS OF DEC 31</b>				
Non-current assets	60,966	59,044	+ 1,922	+ 3.3
Current assets	16,506	17,259	- 753	- 4.4
Equity	12,126	14,679	- 2,553	- 17.4
Net financial debt	33,953	28,827	+ 5,126	+ 17.8
Total assets	77,472	76,303	+ 1,169	+ 1.5
<b>KEY ECONOMIC PERFORMANCE INDICATORS</b>				
Capital employed as of Dec 31	48,300	45,289	+ 3,011	+ 6.6
Return on capital employed (ROCE) (%)	- 2.0	2.7	- 4.7	-
Debt coverage (%)	5.2	11.8	- 6.6	-
Net debt/EBITDA adjusted (multiple)	13.4	6.9	+ 6.5	-
<b>CAPITAL EXPENDITURES/CASH FLOW</b>				
Gross capital expenditures	16,867	15,098	+ 1,769	+ 11.7
Net capital expenditures	7,578	6,524	+ 1,054	+ 16.2
Cash flow from operating activities	3,044	5,644	- 2,600	- 46.1

## REVENUES

TOTAL REVENUES ADJUSTED / € million	2023	2022	± absolute	±%
DB Long-Distance	5,896	4,980	+ 916	+ 18.4
DB Regional	9,706	9,039	+ 667	+ 7.4
DB Cargo	5,582	5,244	+ 338	+ 6.4
DB Netze Track	6,340	6,266	+ 74	+ 1.2
DB Netze Stations	1,449	1,384	+ 65	+ 4.7
DB Energy	3,970	4,200	- 230	- 5.5
Other	6,829	6,123	+ 706	+ 11.5
Consolidation Integrated Rail System	- 13,591	- 12,576	- 1,015	+ 8.1
<b>Integrated Rail System</b>	<b>26,181</b>	<b>24,660</b>	<b>+ 1,521</b>	<b>+ 6.2</b>
DB Schenker	19,127	27,604	- 8,477	- 30.7
Consolidation miscellaneous	- 114	- 179	+ 65	- 36.3
<b>DB Group</b>	<b>45,194</b>	<b>52,085</b>	<b>- 6,891</b>	<b>- 13.2</b>

EXTERNAL REVENUES ADJUSTED / € million	2023	2022	± absolute	±%
DB Long-Distance	5,729	4,845	+ 884	+ 18.2
DB Regional	9,536	8,921	+ 615	+ 6.9
DB Cargo	5,279	4,998	+ 281	+ 5.6
DB Netze Track	2,157	2,035	+ 122	+ 6.0
DB Netze Stations	662	593	+ 69	+ 11.6
DB Energy	1,952	2,451	- 499	- 20.4
Other	775	696	+ 79	+ 11.4
<b>Integrated Rail System</b>	<b>26,090</b>	<b>24,539</b>	<b>+ 1,551</b>	<b>+ 6.3</b>
DB Schenker	19,104	27,545	- 8,441	- 30.6
Consolidation miscellaneous	-	1	- 1	- 100
<b>DB Group</b>	<b>45,194</b>	<b>52,085</b>	<b>- 6,891</b>	<b>- 13.2</b>

EXTERNAL REVENUES ADJUSTED BY REGIONS / € million	2023	2022	± absolute	±%
Germany	28,843	29,003	- 160	- 0.6
Europe (excluding Germany)	9,063	11,681	- 2,618	- 22.4
Asia/Pacific	3,822	5,983	- 2,161	- 36.1
North America	2,746	4,417	- 1,671	- 37.8
Rest of world	720	1,001	- 281	- 28.1
<b>DB Group</b>	<b>45,194</b>	<b>52,085</b>	<b>- 6,891</b>	<b>- 13.2</b>

## KEY ECONOMIC PERFORMANCE INDICATORS

DEBT COVERAGE / € million	2023	2022	± absolute	±%
EBITDA adjusted	2,877	4,783	- 1,906	- 39.8
+ Net operating interest	- 620	- 467	- 153	+ 32.8
+ Actual taxes on income	- 265	- 447	+ 182	- 40.7
<b>Operating cash flow after taxes</b>	<b>1,992</b>	<b>3,869</b>	<b>- 1,877</b>	<b>- 48.5</b>
Net financial debt as of Dec 31	33,953	28,827	+ 5,126	+ 17.8
+ Pension obligations as of Dec 31	3,492	2,970	+ 522	+ 17.6
+ Hybrid capital <sup>1)</sup> as of Dec 31	1,001	1,001	-	-
<b>Net debt as of Dec 31</b>	<b>38,446</b>	<b>32,798</b>	<b>+ 5,648</b>	<b>+ 17.2</b>
<b>Debt coverage (%)</b>	<b>5.2</b>	<b>11.8</b>	<b>- 6.6</b>	<b>-</b>

<sup>1)</sup> In line with the assessment of the rating agencies, half of the hybrid capital shown in the balance sheet is taken into account for calculating the adjusted net debt figure.

ROCE	2023	2022	± absolute	±%
EBIT adjusted (€ million)	- 964	1,225	- 2,189	-
Capital employed as of Dec 31 (€ million)	48,300	45,289	+ 3,011	+ 6.6
<b>ROCE (%)</b>	<b>- 2.0</b>	<b>2.7</b>	<b>- 4.7</b>	<b>-</b>

## PROFIT SITUATION

EBITDA ADJUSTED / € million	2023	2022	± absolute	±%
DB Long-Distance	483	389	+94	+24.2
DB Regional	634	619	+15	+2.4
DB Cargo	-74	-257	+183	-71.2
DB Netze Track	-435	1,244	-1,679	-
DB Netze Stations	20	195	-175	-89.7
DB Energy	242	185	+57	+30.8
Other/consolidation Integrated Rail System	118	-85	+203	-
<b>Integrated Rail System</b>	<b>988</b>	<b>2,290</b>	<b>-1,302</b>	<b>-56.9</b>
DB Schenker	1,909	2,512	-603	-24.0
Consolidation other	-20	-19	-1	+5.3
<b>DB Group</b>	<b>2,877</b>	<b>4,783</b>	<b>-1,906</b>	<b>-39.8</b>
<b>EBIT ADJUSTED / € million</b>	<b>2023</b>	<b>2022</b>	<b>± absolute</b>	<b>±%</b>
DB Long-Distance	-43	-39	-4	+10.3
DB Regional	-22	-31	+9	-29.0
DB Cargo	-497	-665	+168	-25.3
DB Netze Track	-1,098	601	-1,699	-
DB Netze Stations	-150	29	-179	-
DB Energy	163	103	+60	+58.3
Other/consolidation Integrated Rail System	-429	-598	+169	-28.3
<b>Integrated Rail System</b>	<b>-2,076</b>	<b>-600</b>	<b>-1,476</b>	<b>-</b>
DB Schenker	1,129	1,841	-712	-38.7
Consolidation other	-17	-16	-1	+6.3
<b>DB Group</b>	<b>-964</b>	<b>1,225</b>	<b>-2,189</b>	<b>-</b>
<b>EXCERPT FROM STATEMENT OF INCOME</b>	<b>2023</b>	<b>2022</b>	<b>± absolute</b>	<b>±%</b>
/ € million				
Profit/loss before taxes on income	-1,959	1,090	-3,049	-
Taxes on income	-73	-1,143	+1,070	-93.6
Actual taxes on income	-265	-447	+182	-40.7
Deferred tax expenses (-)/ income (+)	192	-696	+888	-
<b>Net loss for the year (continued operations)<sup>1)</sup></b>	<b>-2,032</b>	<b>-53</b>	<b>-1,979</b>	<b>-</b>
Net loss for the year (discontinued operations) <sup>2)</sup>	-319	-174	-145	+83.3
<b>Net loss for the year</b>	<b>-2,351</b>	<b>-227</b>	<b>-2,124</b>	<b>-</b>
DB AG shareholders	-2,399	-274	-2,125	-
Hybrid capital investors	25	25	-	-
Other shareholders (non-controlling interests)	23	22	+1	+4.5
Earnings per share (€)				
Undiluted	-5.58	-0.64	-4.94	-
Diluted	-5.58	-0.64	-4.94	-

<sup>1)</sup> DB Group excluding DB Arriva.

<sup>2)</sup> Due to the expected disposal, DB Arriva is reported as **discontinued operations** (Integrated Report 2023 DB Group  106) in DB Group's financial reporting.

## CAPITAL EXPENDITURES

GROSS CAPITAL EXPENDITURES / € million	2023	2022	± absolute	±%
DB Long-Distance	1,657	1,667	- 10	- 0.6
DB Regional	606	716	- 110	- 15.4
DB Cargo	319	452	- 133	- 29.4
DB Netze Track	10,746	8,969	+ 1,777	+ 19.8
DB Netze Stations	1,595	1,434	+ 161	+ 11.2
DB Energy	329	303	+ 26	+ 8.6
Other/consolidation Integrated Rail System	665	611	+ 54	+ 8.8
<b>Integrated Rail System</b>	<b>15,917</b>	<b>14,152</b>	<b>+ 1,765</b>	<b>+ 12.5</b>
DB Schenker	950	946	+ 4	+ 0.4
Consolidation other	-	-	-	-
<b>DB Group</b>	<b>16,867</b>	<b>15,098</b>	<b>+ 1,769</b>	<b>+ 11.7</b>

GROSS CAPITAL EXPENDITURES BY REGIONS  
/ € million

	2023	2022	± absolute	±%
Germany	16,062	14,273	+ 1,789	+ 12.5
Europe (excluding Germany)	600	546	+ 54	+ 9.9
Asia/Pacific	180	247	- 67	- 27.1
North America	121	106	+ 15	+ 14.2
Rest of world	23	39	- 16	- 41.0
Consolidation	- 119	- 113	- 6	+ 5.3
<b>DB Group</b>	<b>16,867</b>	<b>15,098</b>	<b>+ 1,769</b>	<b>+ 11.7</b>

## NET CAPITAL EXPENDITURES / € million

	2023	2022	± absolute	±%
DB Long-Distance	1,657	1,666	- 9	- 0.5
DB Regional	581	695	- 114	- 16.4
DB Cargo	308	403	- 95	- 23.6
DB Netze Track	2,830	1,738	+ 1,092	+ 62.8
DB Netze Stations	505	397	+ 108	+ 27.2
DB Energy	88	75	+ 13	+ 17.3
Other/consolidation Integrated Rail System	662	604	+ 58	+ 9.6
<b>Integrated Rail System</b>	<b>6,631</b>	<b>5,578</b>	<b>+ 1,053</b>	<b>+ 18.9</b>
DB Schenker	947	946	+ 1	+ 0.1
Consolidation other	-	-	-	-
<b>DB Group</b>	<b>7,578</b>	<b>6,524</b>	<b>+ 1,054</b>	<b>+ 16.2</b>

NET CAPITAL EXPENDITURES BY REGIONS  
/ € million

	2023	2022	± absolute	±%
Germany	6,782	5,709	+ 1,073	+ 18.8
Europe (excluding Germany)	595	536	+ 59	+ 11.0
Asia/Pacific	176	247	- 71	- 28.7
North America	121	106	+ 15	+ 14.2
Rest of world	23	39	- 16	- 41.0
Consolidation	- 119	- 113	- 6	+ 5.3
<b>DB Group</b>	<b>7,578</b>	<b>6,524</b>	<b>+ 1,054</b>	<b>+ 16.2</b>

## Social

### EMPLOYEE SATISFACTION

EMPLOYEE SATISFACTION / SI	2023	2022	2021
DB Group <sup>1)</sup>	-	3.9	-
DB Long-Distance	-	3.6	-
DB Regional	-	3.7	-
DB Cargo	-	3.8	-
DB Netze Track	-	3.9	-
DB Netze Stations	-	4.0	-
DB Energy	-	4.0	-
DB Schenker	-	4.0	-

The employee survey is conducted every two years, on a scale from 1 to 5 (best possible value).

<sup>1)</sup> Incl. DB Arriva.

COMPASS INDEX / %	2023	2022	2021
Compass index	50	-	49

In the interim years of the employee survey, the compass index is determined for the Integrated Rail System in Germany, on a scale of 0% to 100%, as part of the culture barometer sample survey.

### RECRUITING

EXTERNAL NEW HIRES IN GERMANY / NP	2023	2022	2021
DB Group (excluding young professionals)	28,193	21,810	18,450
Young professionals	5,718	4,888	4,529
<b>DB Group</b>	<b>33,911</b>	<b>26,698</b>	<b>22,979</b>

YOUNG PROFESSIONALS IN GERMANY AS OF DEC 31 / NP	2023	2022	2021
Trainees <sup>1)</sup>	12,513	11,869	11,668
Dual degree students <sup>1)</sup>	1,589	1,398	1,316
Trainees <sup>2)</sup>	207	195	128
Interns <sup>2)</sup>	581	593	667
"Chance plus" participants	140	132	184
<b>DB Group</b>	<b>15,030</b>	<b>14,187</b>	<b>13,963</b>

<sup>1)</sup> Includes all class years of vocational training (usually three class years of trainees and dual degree students).

<sup>2)</sup> Germany (companies with about 98% of domestic employees).

## HEALTH MANAGEMENT

SICKNESS ABSENCE RATE IN GERMANY				
BASED ON HOURS / %				
	2023	2022	2021	
DB Group	6.3	7.2	5.7	
DB Long-Distance	7.0	7.8	6.0	
DB Regional	7.7	8.9	7.5	
DB Cargo	7.5	8.1	6.7	
DB Netze Track	5.3	6.2	4.9	
DB Netze Stations	6.2	6.9	5.2	
DB Energy	3.9	4.6	3.3	
Other	6.1	6.7	5.2	
DB Schenker	5.2	6.2	5.4	

Germany (companies with about 98% of domestic employees).

## NUMBER AND STRUCTURE OF EMPLOYEES

EMPLOYEES AS OF DEC 31 / FTE				
	2023	2022	± absolute	±%
DB Long-Distance	20,966	19,139	+1,827	+9.5
DB Regional	39,587	37,738	+1,849	+4.9
DB Cargo	31,359	31,167	+192	+0.6
DB Netze Track	56,084	52,510	+3,574	+6.8
DB Netze Stations	7,786	6,997	+789	+11.3
DB Energy	2,055	1,943	+112	+5.8
Other	61,876	59,992	+1,884	+3.1
<b>Integrated Rail System</b>	<b>219,713</b>	<b>209,486</b>	<b>+10,227</b>	<b>+4.9</b>
DB Schenker	72,710	76,591	-3,881	-5.1
<b>DB Group</b>	<b>292,423</b>	<b>286,077</b>	<b>+6,346</b>	<b>+2.2</b>

EMPLOYEES BY REGIONS AS OF DEC 31 / FTE				
	2023	2022	± absolute	±%
Germany	221,114	212,188	+8,926	+4.2
Europe (excluding Germany)	39,624	40,849	-1,225	-3.0
Asia/Pacific	17,191	18,006	-815	-4.5
North America	10,853	11,299	-446	-3.9
Rest of world	3,641	3,735	-94	-2.5
<b>DB Group</b>	<b>292,423</b>	<b>286,077</b>	<b>+6,346</b>	<b>+2.2</b>

EMPLOYEES (ANNUAL AVERAGE) / FTE	2023	2022	± absolute	±%
DB Long-Distance	20,394	18,931	+1,463	+7.7
DB Regional	38,763	37,599	+1,164	+3.1
DB Cargo	31,558	31,027	+531	+1.7
DB Netze Track	54,551	52,128	+2,423	+4.6
DB Netze Stations	7,389	6,972	+417	+6.0
DB Energy	1,984	1,915	+69	+3.6
Other	60,806	59,193	+1,613	+2.7
<b>Integrated Rail System</b>	<b>215,445</b>	<b>207,765</b>	<b>+7,680</b>	<b>+3.7</b>
DB Schenker	75,062	75,907	-845	-1.1
<b>DB Group</b>	<b>290,507</b>	<b>283,672</b>	<b>+6,835</b>	<b>+2.4</b>

EMPLOYEES AS OF DEC 31 / NP	2023	2022	± absolute	±%
DB Long-Distance	22,132	20,206	+1,926	+9.5
DB Regional	41,962	39,862	+2,100	+5.3
DB Cargo	31,918	31,755	+163	+0.5
DB Netze Track	57,986	54,118	+3,868	+7.1
DB Netze Stations	8,276	7,381	+895	+12.1
DB Energy	2,147	2,024	+123	+6.1
Other	64,718	62,740	+1,978	+3.2
<b>Integrated Rail System</b>	<b>229,139</b>	<b>218,086</b>	<b>+11,053</b>	<b>+5.1</b>
DB Schenker	74,871	78,886	-4,015	-5.1
<b>DB Group</b>	<b>304,010</b>	<b>296,972</b>	<b>+7,038</b>	<b>+2.4</b>

EMPLOYEES BY REGIONS AS OF DEC 31 / NP	2023	2022	± absolute	±%
Germany	231,080	221,343	+9,737	+4.4
Europe (excluding Germany)	41,003	42,308	-1,305	-3.1
Asia/Pacific	17,259	18,055	-796	-4.4
North America	11,033	11,523	-490	-4.3
Rest of world	3,635	3,743	-108	-2.9
<b>DB Group</b>	<b>304,010</b>	<b>296,972</b>	<b>+7,038</b>	<b>+2.4</b>

SHARE OF WOMEN AS OF DEC 31 / %	2023	2022	2021
DB Group <sup>1)</sup>	25.3	25.0	24.4
DB Long-Distance	27.2	26.7	26.9
DB Regional	17.1	16.9	17.0
DB Cargo	13.2	13.0	12.0
DB Netze Track	21.4	20.7	20.0
DB Netze Stations	44.4	44.0	44.1
DB Energy	15.5	15.0	13.9
Other	29.9	29.6	29.2
DB Schenker	36.4	36.7	36.5

<sup>1)</sup> Incl. DB Arriva.

## Environmental

### CLIMATE PROTECTION

#### SPECIFIC GREENHOUSE GAS EMISSIONS COMPARED TO 2006 / %



#### DB TRACTION CURRENT MIX IN GERMANY / %

##### RENEWABLE ENERGIES <sup>1)</sup>



##### NUCLEAR ENERGY



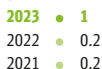
##### COAL



##### NATURAL GAS



##### OTHER



The data for 2023 represents a forecast as of February 2024.

<sup>1)</sup> Since 2023 the share of renewable energies is presented separately without support from the Renewable Energy Sources Act (Erneuerbare-Energien-Gesetz; EEG).

### NOISE REDUCTION

NOISE REMEDIATION AND PREVENTION IN GERMANY	2023	2022	2021
<b>NOISE REMEDIATION (EXISTING NETWORK)</b>			
Noise barriers completed (km)	46.8	37.7	44.2
Homes with passive measures	1,750	1,484	1,820
Track kilometers noise-remediated in total as of Dec 31 (km)	2,255	2,202	2,110
Noise remediation areas relieved by noise prevention in total (km)	52.8	52.1	52.1
<b>NOISE PREVENTION (NEW CONSTRUCTION AND EXPANSION LINES)</b>			
Noise barriers completed (km)	40.2	33.2	41.2
Homes with passive measures	1,060	714	590



## RESOURCE CONSERVATION

VOLUME OF WASTE BY TYPE OF DISPOSAL	2023	2022	2021
Total waste (thousand t)	7,974	8,187	8,830
Recycling rate (%)	96.5	96.7	96.2
Share of thermal recovery (%)	1.1	1.2	1.2
Share of disposal (%)	2.4	2.1	2.6
Share of hazardous waste (%)	4.7	4.7	5.4

Period October 1 to September 30. DB Schenker period January 1 to December 31 of the respective year. Includes only DB Cargo AG from the DB Cargo business unit. The waste is generated by our own activities and is managed by third parties outside of DB Group.

## Ratings

CREDIT RATINGS	First issued	Last update	Ratings		
			Short-term	Long-term	Outlook
S&P Global Ratings	May 16, 2000	Nov 23, 2023	A - 1+	AA-	stable
Moody's	May 16, 2000	Jul 11, 2023	P-1	Aa1	stable

ESG RATINGS	2023	2022	2021	Last update	Scale
CDP (climate rating)	A-	A	A	Feb 2024 <sup>1)</sup>	A to F
EcoVadis	68	68	61	Jun 2023	The best 1% (75-100) The best 5% (67-74) The best 25% (56-66) The best 50% (47-55)
ISS ESG	B-	C+	B-	Sep 2023	A+ / 4.00 to D- / 1.00
MSCI	A	AA	A	Dec 2023	Leader (AA - AAA) Average (BB - A) Laggard (CCC - B)
Sustainalytics	22.1	24.5	19.7	Aug 2023	Risk assessment: negligible (0-10), low (10-20), medium (20-30), high (30-40), severe (40-100)

Alphabetical order.

<sup>1)</sup> CDP published the 2023 climate rating results in February 2024.

# FIGURES BY BUSINESS UNITS

## Overview passenger transport

	2023	2022	± absolute	±%
<b>PERFORMANCE FIGURES</b>				
<b>Passengers (million)</b>	<b>2,385</b>	<b>2,205</b>	<b>+180</b>	<b>+8.2</b>
<b>Passengers per day (million)</b>	<b>6.5</b>	<b>6.0</b>	<b>+0.5</b>	<b>+8.3</b>
<b>RAIL</b>				
<b>Passengers (million)</b>	<b>1,837</b>	<b>1,737</b>	<b>+100</b>	<b>+5.8</b>
DB Long-Distance	140.3	132.0	+8.3	+6.3
DB Regional	1,697	1,605	+92	+5.7
<b>Passengers in Germany (million)</b>	<b>1,837</b>	<b>1,737</b>	<b>+100</b>	<b>+5.8</b>
<b>Passengers per day (million)</b>	<b>5.03</b>	<b>4.76</b>	<b>+0.27</b>	<b>+5.7</b>
DB Long-Distance	0.38	0.36	+0.02	+5.6
DB Regional	4.65	4.40	+0.25	+5.7
<b>Volume sold (million pkm)</b>	<b>82,943</b>	<b>76,475</b>	<b>+6,468</b>	<b>+8.5</b>
DB Long-Distance	45,459	41,720	+3,739	+9.0
DB Regional	37,485	34,754	+2,731	+7.9
<b>Volume produced (million train-path km)</b>	<b>578.0</b>	<b>592.7</b>	<b>-14.7</b>	<b>-2.5</b>
DB Long-Distance	157.7	158.9	-1.2	-0.8
DB Regional	420.3	433.7	-13.4	-3.1
Other	0.0	0.0	-	-
<b>Trains per day</b>	<b>24,325</b>	<b>23,325</b>	<b>+1,000</b>	<b>+4.3</b>
DB Long-Distance	1,617	1,600	+17	+1.1
DB Regional	22,708	21,725	+983	+4.5
<b>BUS</b>				
<b>Passengers (million)</b>	<b>547.8</b>	<b>468.2</b>	<b>+79.6</b>	<b>+17.0</b>
<b>Volume sold (million pkm)</b>	<b>6,024</b>	<b>5,062</b>	<b>+962</b>	<b>+19.0</b>
DB Regional	6,010	5,049	+961	+19.0
Other	13.6	12.9	+0.7	+5.4
<b>Volume produced (million bus km)</b>	<b>530.8</b>	<b>503.8</b>	<b>+27.0</b>	<b>+5.4</b>
<b>PUNCTUALITY (%)</b>				
<b>DB rail passenger transport in Germany</b>	<b>90.3</b>	<b>91.0</b>	<b>-0.7</b>	<b>-</b>
DB Long-Distance	64.0	65.2	-1.2	-
DB Regional	91.0	91.8	-0.8	-

	2023	2022	± absolute	±%
<b>ROLLING STOCK</b>				
<b>ICE fleet (trains)</b>	<b>401</b>	<b>367</b>	<b>+34</b>	<b>+9.3</b>
<b>Multiple units<sup>1)</sup></b>	<b>4,406</b>	<b>4,336</b>	<b>+70</b>	<b>+1.6</b>
S-Bahn (metro) d.c.	875	877	-2	-0.2
S-Bahn (metro) a.c.	1,116	1,095	+21	+1.9
Diesel multiple units	1,136	1,160	-24	-2.1
Rail buses	3	3	-	-
Electric multiple units	1,276	1,201	+75	+6.2
<b>Locomotives</b>	<b>818</b>	<b>862</b>	<b>-44</b>	<b>-5.1</b>
DB Long-Distance <sup>2)</sup>	331	364	-33	-9.1
DB Regional	487	498	-11	-2.2
<b>Passenger cars<sup>3)</sup></b>	<b>3,748</b>	<b>3,968</b>	<b>-220</b>	<b>-5.5</b>
DB Long-Distance	1,904	2,028	-124	-6.1
DB Regional	1,844	1,940	-96	-4.9
<b>Seats (rail) (thousand)</b>	<b>1,260</b>	<b>1,241</b>	<b>+19</b>	<b>+1.5</b>
DB Long-Distance	294	284	+10	+3.5
DB Regional	963	954	+9	+0.9
Other	2	2	-	-
<b>Buses<sup>4)</sup></b>	<b>11,603</b>	<b>10,957</b>	<b>+646</b>	<b>+5.9</b>
DB Regional	11,553	10,904	+649	+6.0
Other	50	53	-3	-5.7
<b>Automobiles (Flinkster)<sup>5)</sup></b>	<b>2,711</b>	<b>2,726</b>	<b>-15</b>	<b>-0.6</b>
thereof electric vehicles	274	302	-28	-9.3
<b>Automobiles (ioki)</b>	<b>417</b>	<b>386</b>	<b>+31</b>	<b>+8.0</b>
<b>Call a Bike</b>	<b>14,532</b>	<b>13,467</b>	<b>+1,065</b>	<b>+7.9</b>
thereof e-Call a Bike	976	946	+30	+3.2
<b>OTHER</b>				
<b>Automatic ticketing machines</b>	<b>5,482</b>	<b>5,628</b>	<b>-146</b>	<b>-2.6</b>
DB Regional	444	453	-9	-2.0
Combined ticketing machines	5,038	5,175	-137	-2.6
<b>BahnCards (thousand)</b>	<b>5,019</b>	<b>5,107</b>	<b>-88</b>	<b>-1.7</b>
BahnCard 100	42.7	46.4	-3.7	-8.0
BahnCard 50	1,236	1,302	-66	-5.1
BahnCard 25	3,741	3,759	-18	-0.5
<b>Participants BahnBonus program (thousand)</b>	<b>5,475</b>	<b>5,111</b>	<b>+364</b>	<b>+7.1</b>

<sup>1)</sup> Including ICE T, ICE 3 and ICE 4.

<sup>2)</sup> Including ICE 1 and ICE 2 power cars.

<sup>3)</sup> Including ICE cars.

<sup>4)</sup> DB Group and externally owned stock.

<sup>5)</sup> Vehicles of the Flinkster network in Germany, Austria and Italy.

## DB Long-Distance

	2023	2022	± absolute	±%
<b>PERFORMANCE FIGURES</b>				
<b>RAIL</b>				
<b>Passengers (million)</b>	<b>140.3</b>	<b>132.0</b>	<b>+8.3</b>	<b>+6.3</b>
ICE	107.9	98.1	+9.8	+10.0
Intercity/EC	30.7	32.1	-1.4	-4.4
Other products	1.7	1.8	-0.1	-5.6
<b>Passengers per day (million)</b>	<b>0.38</b>	<b>0.36</b>	<b>+0.02</b>	<b>+5.6</b>
<b>Volume sold (million pkm)</b>	<b>45,459</b>	<b>41,720</b>	<b>+3,739</b>	<b>+9.0</b>
ICE	37,958	33,988	+3,970	+11.7
Intercity/EC	7,443	7,671	-228	-3.0
Other products	58	61	-3	-4.9
<b>Volume produced (million train-path km)</b>	<b>157.7</b>	<b>158.9</b>	<b>-1.2</b>	<b>-0.8</b>
<b>Mean travel distance (km)</b>	<b>324.0</b>	<b>316.1</b>	<b>+7.9</b>	<b>+2.5</b>
thereof ICE	351.8	346.5	+5.3	+1.5
thereof Intercity/EC	242.4	239.0	+3.4	+1.4
<b>Load factor (%)</b>	<b>49.1</b>	<b>45.9</b>	<b>+3.2</b>	<b>-</b>
<b>Trains per day</b>	<b>1,617</b>	<b>1,600</b>	<b>+17</b>	<b>+1.1</b>
<b>FINANCIAL FIGURES</b>				
<b>Total revenues (€ million)</b>	<b>5,896</b>	<b>4,980</b>	<b>+916</b>	<b>+18.4</b>
thereof external revenues	5,729	4,845	+884	+18.2
<b>EBITDA adjusted (€ million)</b>	<b>483</b>	<b>389</b>	<b>+94</b>	<b>+24.2</b>
<b>EBIT adjusted (€ million)</b>	<b>-43</b>	<b>-39</b>	<b>-4</b>	<b>+10.3</b>
<b>Gross capital expenditures (€ million)</b>	<b>1,657</b>	<b>1,667</b>	<b>-10</b>	<b>-0.6</b>
<b>FURTHER KEY FIGURES</b>				
<b>Punctuality rail (%)</b>	<b>64.0</b>	<b>65.2</b>	<b>-1.2</b>	<b>-</b>
<b>Punctuality (whole journey) (%)</b>	<b>68.9</b>	<b>69.3</b>	<b>-0.4</b>	<b>-</b>
<b>Customer satisfaction (grade)</b>	<b>2.7</b>	<b>2.7</b>	<b>-</b>	<b>-</b>
<b>Employees as of Dec 31 (FTE)</b>	<b>20,966</b>	<b>19,139</b>	<b>+1,827</b>	<b>+9.5</b>
<b>Employees (annual average) (FTE)</b>	<b>20,394</b>	<b>18,931</b>	<b>+1,463</b>	<b>+7.7</b>
<b>Employee satisfaction (SI)</b>	<b>-</b>	<b>3.6</b>	<b>-</b>	<b>-</b>
<b>Share of women as of Dec 31 (%)</b>	<b>27.2</b>	<b>26.7</b>	<b>+0.5</b>	<b>-</b>
<b>Sickness absence rate (%)</b>	<b>7.0</b>	<b>7.8</b>	<b>-0.8</b>	<b>-</b>
<b>Specific end-energy consumption compared to 2006 (based on pkm) (%)</b>	<b>-29.8</b>	<b>-23.1</b>	<b>-6.7</b>	<b>-</b>
<b>ROLLING STOCK</b>				
<b>Locomotives</b>	<b>169</b>	<b>202</b>	<b>-33</b>	<b>-16.3</b>
Electric locomotives	140	172	-32	-18.6
Diesel locomotives	29	30	-1	-3.3
<b>Passenger cars</b>	<b>971</b>	<b>1,095</b>	<b>-124</b>	<b>-11.3</b>
Intercity/EC (including restaurant cars)	666	825	-159	-19.3
Double-deck cars (Intercity 2)	305	270	+35	+13.0
<b>INTERCITY 2/KISS</b>				
<b>Trains</b>	<b>17</b>	<b>17</b>	<b>-</b>	<b>-</b>
<b>Rail cars</b>	<b>34</b>	<b>34</b>	<b>-</b>	<b>-</b>
<b>Trailer cars</b>	<b>50</b>	<b>50</b>	<b>-</b>	<b>-</b>

	2023	2022	± absolute	± %
<b>ICE FLEET</b>				
<b>Trains</b>	<b>401</b>	<b>367</b>	<b>+34</b>	<b>+9.3</b>
<b>ICE 1</b>				
<b>Trains</b>	<b>58</b>	<b>58</b>	-	-
<b>Power cars</b>	<b>116</b>	<b>116</b>	-	-
<b>Intermediate cars</b>	<b>624</b>	<b>624</b>	-	-
1st class cars	184	184	-	-
2nd class cars	382	382	-	-
Restaurant cars	58	58	-	-
<b>ICE 2</b>				
<b>Trains</b>	<b>43</b>	<b>44</b>	<b>-1</b>	<b>-2.3</b>
<b>Power cars</b>	<b>46</b>	<b>46</b>	-	-
<b>Driving trailers</b>	<b>45</b>	<b>45</b>	-	-
<b>Intermediate cars</b>	<b>264</b>	<b>264</b>	-	-
1st class cars	88	88	-	-
2nd class cars	132	132	-	-
Restaurant cars	44	44	-	-
<b>ICE T</b>				
<b>Multiple units</b>	<b>70</b>	<b>70</b>	-	-
<b>Rail cars</b>	<b>269</b>	<b>269</b>	-	-
<b>End cars</b>	<b>140</b>	<b>140</b>	-	-
<b>Intermediate cars</b>	<b>59</b>	<b>59</b>	-	-
<b>ICE 3</b>				
<b>Multiple units</b>	<b>95</b>	<b>83</b>	<b>+12</b>	<b>+14.5</b>
<b>Rail cars</b>	<b>380</b>	<b>332</b>	<b>+48</b>	<b>+14.5</b>
1st class cars	95	83	+12	+14.5
2nd class cars	285	249	+36	+14.5
<b>Trailer cars</b>	<b>380</b>	<b>332</b>	<b>+48</b>	<b>+14.5</b>
1st class cars	95	83	+12	+14.5
2nd class cars	190	166	+24	+14.5
Restaurant cars	95	83	+12	+14.5
<b>ICE 4</b>				
<b>Multiple units</b>	<b>135</b>	<b>112</b>	<b>+23</b>	<b>+20.5</b>
<b>Rail cars</b>	<b>755</b>	<b>658</b>	<b>+97</b>	<b>+14.7</b>
1st class cars	100	93	+7	+7.5
2nd class cars	655	565	+90	+15.9
<b>Trailer cars</b>	<b>740</b>	<b>634</b>	<b>+106</b>	<b>+16.7</b>
1st class cars	235	205	+30	+14.6
2nd class cars	370	317	+53	+16.7
Restaurant cars	135	112	+23	+20.5
<b>Seats</b>	<b>294,476</b>	<b>284,223</b>	<b>+10,253</b>	<b>+3.6</b>
1st class cars	61,226	60,201	+1,025	+1.7
2nd class cars	233,250	224,022	+9,228	+4.1

## DB Regional

	2023	2022	± absolute	±%
<b>PERFORMANCE FIGURES</b>				
Passengers (million)	2,244	2,072	+172	+8.3
Passengers per day (million)	6.15	5.68	+0.47	+8.3
Volume sold (million pkm)	43,495	39,804	+3,691	+9.3
<b>RAIL</b>				
Passengers (million)	1,697	1,605	+92	+5.7
Passengers per day (million)	4.65	4.40	+0.25	+5.7
Volume sold (million pkm)	37,485	34,754	+2,731	+7.9
Volume produced (million train-path km)	420.3	433.7	-13.4	-3.1
Trains per day	22,708	21,725	+983	+4.5
Mean travel distance (km)	22.1	21.7	+0.4	+1.8
<b>BUS</b>				
Passengers (million)	546.8	467.2	+79.6	+17.0
Volume sold (million pkm)	6,010	5,049	+961	+19.0
Volume produced (million bus km)	529.0	502.1	+26.9	+5.4
<b>FINANCIAL FIGURES</b>				
Total revenues (€ million)	9,706	9,039	+667	+7.4
thereof external revenues	9,536	8,921	+615	+6.9
thereof concession fees	6,759	6,508	+251	+3.9
EBITDA adjusted (€ million)	634	619	+15	+2.4
EBIT adjusted (€ million)	-22	-31	+9	-29.0
Gross capital expenditures (€ million)	606	716	-110	-15.4
<b>FURTHER KEY FIGURES</b>				
Punctuality (rail) (%)	91.0	91.8	-0.8	-
Punctuality (bus) (%)	85.2	86.0	-0.8	-
Customer satisfaction (rail) (grade)	2.2	2.2	-	-
Customer satisfaction (bus) (grade)	2.0	2.2	-0.2	-
Employees as of Dec 31 (FTE)	39,587	37,738	+1,849	+4.9
Employees (annual average) (FTE)	38,763	37,599	+1,164	+3.1
Employee satisfaction (SI)	-	3.7	-	-
Share of women as of Dec 31 (%)	17.1	16.9	+0.2	-
Sickness absence rate (%)	7.7	8.9	-1.2	-
Specific end-energy consumption (rail) compared to 2006 (based on pkm) (%)	-31.7	-23.8	-7.9	-
Specific end-energy consumption (bus) compared to 2006 (based on bus km) (%)	-1.1	-0.4	-0.7	-
<b>ROLLING STOCK</b>				
<b>RAIL</b>				
Locomotives	487	498	-11	-2.2
Electric locomotives	402	413	-11	-2.7
Diesel locomotives	85	85	-	-

	2023	2022	± absolute	±%
<b>Multiple units</b>	<b>4,066</b>	<b>4,031</b>	<b>+35</b>	<b>+0.9</b>
S-Bahn (metro) d.c.	875	877	-2	-0.2
S-Bahn (metro) a.c.	1,116	1,095	+21	+1.9
Diesel multiple units	1,113	1,137	-24	-2.1
Rail buses	3	3	-	-
Electric multiple units	959	919	+40	+4.4
<b>Rail cars</b>	<b>11,936</b>	<b>11,688</b>	<b>+248</b>	<b>+2.1</b>
S-Bahn (metro) d.c.	2,123	2,067	+56	+2.7
S-Bahn (metro) a.c.	4,320	4,238	+82	+1.9
Diesel rail cars	2,332	2,384	-52	-2.2
Rail buses	3	3	-	-
Electric rail cars	3,158	2,996	+162	+5.4
<b>Coaches</b>	<b>1,844</b>	<b>1,940</b>	<b>-96</b>	<b>-4.9</b>
Double-deck cars	1,708	1,776	-68	-3.8
Other passenger cars (including baggage cars)	136	164	-28	-17.1
<b>Seats</b>	<b>962,916</b>	<b>953,989</b>	<b>+8,927</b>	<b>+0.9</b>
1st class cars	53,238	53,521	-283	-0.5
2nd class cars (including folding seats)	909,678	900,468	+9,210	+1.0
<b>BUS</b>				
<b>Buses</b>	<b>11,553</b>	<b>10,904</b>	<b>+649</b>	<b>+6.0</b>
DB stock	5,806	5,449	+357	+6.6
Externally owned stock	5,747	5,455	+292	+5.4

## DB Cargo

	2023	2022	± absolute	±%
<b>PERFORMANCE FIGURES</b>				
<b>Freight carried</b> (million t)	<b>197.6</b>	<b>222.3</b>	<b>-24.7</b>	<b>-11.1</b>
thereof German subsidiaries	163.7	185.6	-21.9	-11.8
<b>Volume sold</b> (million tkm)	<b>74,458</b>	<b>84,468</b>	<b>-10,010</b>	<b>-11.9</b>
thereof German subsidiaries	51,905	59,607	-7,702	-12.9
<b>Volume produced</b> (million train-path km)	<b>146.9</b>	<b>169.1</b>	<b>-22.2</b>	<b>-13.1</b>
<b>Trains per day</b>	<b>2,267</b>	<b>2,632</b>	<b>-365</b>	<b>-13.9</b>
<b>Mean transport distance</b> (km)	<b>376.8</b>	<b>380.0</b>	<b>-3.2</b>	<b>-0.8</b>
<b>Capacity utilization</b> (t per train)	<b>506.7</b>	<b>499.4</b>	<b>+7.3</b>	<b>+1.5</b>
<b>FINANCIAL FIGURES</b>				
<b>Total revenues</b> (€ million)	<b>5,582</b>	<b>5,244</b>	<b>+338</b>	<b>+6.4</b>
thereof external revenues	5,279	4,998	+281	+5.6
<b>EBITDA adjusted</b> (€ million)	<b>-74</b>	<b>-257</b>	<b>+183</b>	<b>-71.2</b>
<b>EBIT adjusted</b> (€ million)	<b>-497</b>	<b>-665</b>	<b>+168</b>	<b>-25.3</b>
<b>EBIT margin (adjusted)</b> (%)	<b>-8.9</b>	<b>-12.7</b>	<b>+3.8</b>	<b>-</b>
<b>Gross capital expenditures</b> (€ million)	<b>319</b>	<b>452</b>	<b>-133</b>	<b>-29.4</b>

	2023	2022	± absolute	±%
<b>FURTHER KEY FIGURES</b>				
<b>Punctuality (%)</b>	69.7	66.3	+3.4	-
<b>Customer satisfaction (grade)</b>	2.8	2.7	+0.1	-
<b>Employees as of Dec 31 (FTE)</b>	31,359	31,167	+192	+0.6
<b>Employees (annual average) (FTE)</b>	31,558	31,027	+531	+1.7
<b>Employee satisfaction (SI)</b>	-	3.8	-	-
<b>Share of women as of Dec 31 (%)</b>	13.2	13.0	+0.2	-
<b>Sickness absence rate in Germany (%)</b>	7.5	8.1	-0.6	-
<b>Specific end-energy consumption compared to 2006 (based on tkm) (%)</b>	-22.5	-26.0	+3.5	-
<b>Quiet active freight cars in Germany<sup>1)</sup> as of Dec 31</b>	57,515	58,921	-1,406	-2.4
<b>ROLLING STOCK</b>				
<b>Locomotives</b>	2,536	2,576	-40	-1.6
Electric locomotives	1,215	1,220	-5	-0.4
Diesel locomotives	1,321	1,356	-35	-2.6
<b>Freight cars</b>	78,661	82,974	-4,313	-5.2
thereof with whisper brakes	74,550	77,800	-3,250	-4.2
DB stock	68,039	70,982	-2,943	-4.1
Covered wagons	13,084	13,549	-465	-3.4
Open wagons	19,264	20,526	-1,262	-6.1
Flat wagons	35,177	36,398	-1,221	-3.4
Tank wagons	514	509	+5	+1.0
Leased wagons	1,252	1,283	-31	-2.4
Rented from third parties	11,106	12,268	-1,162	-9.5
Rented to third parties (-)	1,736	1,559	+177	+11.4
<b>Transport capacity of freight cars (thousand t)</b>	4,423	5,558	-1,135	-20.4
DB stock	3,663	4,555	-892	-19.6
Covered wagons	523	634	-111	-17.5
Open wagons	1,104	1,283	-179	-14.0
Flat wagons	2,023	2,621	-598	-22.8
Tank wagons	13	17	-4	-23.5
Leased wagons	94	91	+3	+3.3
Rented from third parties	748	982	-234	-23.8
Rented to third parties (-)	82	70	+12	+17.1

<sup>1)</sup> Excluding wagons rented from third parties.



## DB InfraGO

At the end of December 2023, the merger of DB Netz AG and DB Station&Service AG into a rail infrastructure company oriented towards the common good took effect.

Since then, DB Netz AG has been operating under the name DB InfraGO AG. The previous business units DB Netze Track and DB Netze Stations were merged to the new business unit DB InfraGO in 2024 and were reported separately for the last time in 2023.

## DB NETZE TRACK

	2023	2022	± absolute	± %
<b>PERFORMANCE FIGURES</b>				
<b>Train kilometers on track infrastructure</b> (million train-path km)	<b>1,118</b>	<b>1,133</b>	<b>- 15</b>	<b>- 1.3</b>
thereof non-Group railways	437.8	419.8	+ 18.0	+ 4.3
DB Netze Track	1,116	1,132	- 16	- 1.4
thereof non-Group railways	437.7	419.8	+ 17.9	+ 4.3
Other <sup>1)</sup>	1.3	1.3	-	-
<b>FINANCIAL FIGURES</b>				
<b>Total revenues</b> (€ million)	<b>6,340</b>	<b>6,266</b>	<b>+ 74</b>	<b>+ 1.2</b>
thereof external revenues	2,157	2,035	+ 122	+ 6.0
Share of total revenues (%)	34.0	32.5	+ 1.5	-
<b>EBITDA adjusted</b> (€ million)	<b>- 435</b>	<b>1,244</b>	<b>- 1,679</b>	<b>-</b>
<b>EBIT adjusted</b> (€ million)	<b>- 1,098</b>	<b>601</b>	<b>- 1,699</b>	<b>-</b>
<b>Operating income after interest</b> (€ million)	<b>- 1,244</b>	<b>505</b>	<b>- 1,749</b>	<b>-</b>
<b>Capital employed</b> as of Dec 31 (€ million)	<b>23,655</b>	<b>21,300</b>	<b>+ 2,355</b>	<b>+ 11.1</b>
<b>Net financial debt</b> as of Dec 31 (€ million)	<b>10,706</b>	<b>9,623</b>	<b>+ 1,083</b>	<b>+ 11.3</b>
<b>Gross capital expenditures</b> (€ million)	<b>10,746</b>	<b>8,969</b>	<b>+ 1,777</b>	<b>+ 19.8</b>
<b>Net capital expenditures</b> (€ million)	<b>2,830</b>	<b>1,738</b>	<b>+ 1,092</b>	<b>+ 62.8</b>
<b>FURTHER KEY FIGURES</b>				
<b>Punctuality DB Group (rail) in Germany</b> (%)	<b>90.1</b>	<b>90.9</b>	<b>- 0.8</b>	<b>-</b>
<b>Punctuality (rail) in Germany</b> <sup>2)</sup> (%)	<b>88.9</b>	<b>89.7</b>	<b>- 0.8</b>	<b>-</b>
<b>Customer satisfaction</b> (grade)	<b>3.6</b>	<b>3.3</b>	<b>+ 0.3</b>	<b>-</b>
<b>Condition grade total network</b> (grade)	<b>3.0</b>	<b>3.0</b>	<b>-</b>	<b>-</b>
<b>Employees</b> as of Dec 31 (FTE)	<b>56,084</b>	<b>52,510</b>	<b>+ 3,574</b>	<b>+ 6.8</b>
<b>Employees</b> (annual average) (FTE)	<b>54,551</b>	<b>52,128</b>	<b>+ 2,423</b>	<b>+ 4.6</b>
<b>Employee satisfaction</b> (SI)	<b>-</b>	<b>3.9</b>	<b>-</b>	<b>-</b>
<b>Share of women</b> as of Dec 31 (%)	<b>21.4</b>	<b>20.7</b>	<b>+ 0.7</b>	<b>-</b>
<b>Sickness absence rate</b> (%)	<b>5.3</b>	<b>6.2</b>	<b>- 0.9</b>	<b>-</b>
<b>Track kilometers noise remediated in total</b> as of Dec 31 (km)	<b>2,255</b>	<b>2,202</b>	<b>+ 53</b>	<b>+ 2.4</b>

<sup>1)</sup> UBB Usedomer Bäderbahn GmbH and Infra Silesia S.A., Rybnik/Poland.

<sup>2)</sup> Non-Group and DB Group train operating companies.

	2023	2022	± absolute	±%
<b>INFRASTRUCTURE <sup>1)</sup></b>				
<b>Length of line operated (km)</b>	<b>33,464</b>	<b>33,469</b>	<b>-5</b>	<b>-</b>
thereof electrified	20,853	20,656	+197	+1.0
thereof DB Netze Track	33,351	33,356	-5	-
Standard gauge	33,458	33,463	-5	-
Other gauges	6	6	-	-
<b>Length of all track (km)</b>	<b>60,949</b>	<b>60,999</b>	<b>-50</b>	<b>-0.1</b>
thereof DB Netze Track	60,748	60,798	-50	-0.1
<b>Switches and crossings</b>	<b>64,797</b>	<b>65,085</b>	<b>-288</b>	<b>-0.4</b>
thereof DB Netze Track	64,468	64,756	-288	-0.4
<b>Controlling signaling systems</b>	<b>3,838</b>	<b>3,854</b>	<b>-16</b>	<b>-0.4</b>
thereof DB Netze Track	3,833	3,849	-16	-0.4
Systems for shunting	169	166	+3	+1.8
Mechanical interlockings	565	588	-23	-3.9
Electromechanical interlockings	244	255	-11	-4.3
Relay interlockings	1,164	1,191	-27	-2.3
Electronic interlockings	1,495	1,474	+21	+1.4
Other	201	180	+21	+11.7
<b>Level crossings</b>	<b>13,598</b>	<b>13,624</b>	<b>-26</b>	<b>-0.2</b>
thereof technically protected	9,709	9,735	-26	-0.3
thereof DB Netze Track	13,503	13,529	-26	-0.2
thereof technically protected	9,648	9,677	-29	-0.3
<b>Noise protection walls (km)</b>	<b>1,944</b>	<b>1,870</b>	<b>+74</b>	<b>+4.0</b>
<b>Tunnels</b>	<b>761</b>	<b>760</b>	<b>+1</b>	<b>+0.1</b>
Subterranean	601	606	-5	-0.8
Above ground	160	154	+6	+3.9
<b>Total length of tunnels (km)</b>	<b>654.1</b>	<b>652.7</b>	<b>+1.4</b>	<b>+0.2</b>
<b>Length of longest tunnel (m)</b>	<b>10,779</b>	<b>10,779</b>	<b>-</b>	<b>-</b>
<b>Railway bridges</b>	<b>25,216</b>	<b>25,210</b>	<b>+6</b>	<b>-</b>
thereof DB Netze Track	25,199	25,193	+6	-
<b>Infrastructure sidings</b>	<b>2,318</b>	<b>2,323</b>	<b>-5</b>	<b>-0.2</b>

<sup>1)</sup> Incl. UBB Usedomer Bäderbahn GmbH and Infra Silesia S.A., Rybnik/Poland.

## DB NETZE STATIONS

	2023	2022	± absolute	±%
<b>PERFORMANCE FIGURES</b>				
<b>Station stops</b> (million)	<b>159.6</b>	<b>159.8</b>	<b>- 0.2</b>	<b>- 0.1</b>
thereof non-Group railways	47.8	45.1	+ 2.7	+ 6.0
DB Netze Stations	155.6	155.9	- 0.3	- 0.2
Other <sup>1)</sup>	4.0	3.9	+ 0.1	+ 2.6
<b>FINANCIAL FIGURES</b>				
<b>Total revenues</b> (€ million)	<b>1,449</b>	<b>1,384</b>	<b>+ 65</b>	<b>+ 4.7</b>
thereof external revenues	662	593	+ 69	+ 11.6
thereof rental and lease revenues	377	350	+ 27	+ 7.7
<b>EBITDA adjusted</b> (€ million)	<b>20</b>	<b>195</b>	<b>- 175</b>	<b>- 89.7</b>
<b>EBIT adjusted</b> (€ million)	<b>- 150</b>	<b>29</b>	<b>- 179</b>	<b>-</b>
<b>Capital employed</b> as of Dec 31 (€ million)	<b>3,942</b>	<b>3,542</b>	<b>+ 400</b>	<b>+ 11.3</b>
<b>Net financial debt</b> as of Dec 31 (€ million)	<b>1,280</b>	<b>894</b>	<b>+ 386</b>	<b>+ 43.2</b>
<b>Gross capital expenditures</b> (€ million)	<b>1,595</b>	<b>1,434</b>	<b>+ 161</b>	<b>+ 11.2</b>
<b>Net capital expenditures</b> (€ million)	<b>505</b>	<b>397</b>	<b>+ 108</b>	<b>+ 27.2</b>
<b>FURTHER KEY FIGURES</b>				
<b>Facilities quality</b> (grade) <sup>2)</sup>	<b>2.77</b>	<b>2.77</b>	<b>-</b>	<b>-</b>
<b>Customer satisfaction traffic stations (passengers/visitors)</b> (grade)	<b>2.5</b>	<b>2.4</b>	<b>+ 0.1</b>	<b>-</b>
<b>Customer satisfaction traffic stations (TOCs, transport authorities and Federal states)</b> (grade)	<b>2.8</b>	<b>2.6</b>	<b>+ 0.2</b>	<b>-</b>
<b>Customer satisfaction tenants</b> (grade)	<b>2.2</b>	<b>2.1</b>	<b>+ 0.1</b>	<b>-</b>
<b>Employees</b> as of Dec 31 (FTE)	<b>7,786</b>	<b>6,997</b>	<b>+ 789</b>	<b>+ 11.3</b>
<b>Employees</b> (annual average) (FTE)	<b>7,389</b>	<b>6,972</b>	<b>+ 417</b>	<b>+ 6.0</b>
<b>Employee satisfaction</b> (SI)	<b>-</b>	<b>4.0</b>	<b>-</b>	<b>-</b>
<b>Share of women</b> as of Dec 31 (%)	<b>44.4</b>	<b>44.0</b>	<b>+ 0.4</b>	<b>-</b>
<b>Sickness absence rate</b> (%)	<b>6.2</b>	<b>6.9</b>	<b>- 0.7</b>	<b>-</b>
<b>Absolute primary energy consumption (stations) compared to 2010</b> (%)	<b>- 34.3</b>	<b>- 30.6</b>	<b>- 3.7</b>	<b>-</b>
<b>INFRASTRUCTURE</b>				
<b>Passenger stations</b>	<b>5,697</b>	<b>5,699</b>	<b>- 2</b>	<b>-</b>
DB Netze Stations	5,399	5,401	- 2	-
Other <sup>1)</sup>	298	298	-	-

<sup>1)</sup> DB RegioNetz Infrastruktur GmbH and UBB Usedomer Bäderbahn GmbH.

<sup>2)</sup> Preliminary figures.

## DB Energy

	2023	2022	± absolute	±%
<b>PERFORMANCE FIGURES</b>				
<b>Traction current (16.7 Hz and direct current) (GWh)</b>	7,262	7,515	- 253	- 3.4
<b>Traction current pass-through (16.7 Hz) (GWh)</b>	2,695	2,353	+ 342	+ 14.5
<b>Stationary energy (50 Hz and 16.7 Hz) (GWh)</b>	8,590	13,809	- 5,219	- 37.8
<b>Diesel fuel (million l)</b>	365.4	382.0	- 16.6	- 4.3
<b>FINANCIAL FIGURES</b>				
<b>Total revenues (€ million)</b>	3,970	4,200	- 230	- 5.5
thereof external revenues	1,952	2,451	- 499	- 20.4
<b>EBITDA adjusted (€ million)</b>	242	185	+ 57	+ 30.8
<b>EBIT adjusted (€ million)</b>	163	103	+ 60	+ 58.3
<b>Capital employed as of Dec 31 (€ million)</b>	1,064	1,065	- 1	- 0.1
<b>Net financial debt as of Dec 31 (€ million)</b>	688	699	- 11	- 1.6
<b>Gross capital expenditures (€ million)</b>	329	303	+ 26	+ 8.6
<b>Net capital expenditures (€ million)</b>	88	75	+ 13	+ 17.3
<b>FURTHER KEY FIGURES</b>				
<b>Supply reliability<sup>1)</sup> (%)</b>	99.99	99.99	-	-
<b>Customer satisfaction (grade)</b>	2.1	2.1	-	-
Traction current and diesel	2.3	2.4	- 0.1	-
Electricity and gas plus (Group customers)	2.1	2.1	-	-
<b>Employees as of Dec 31 (FTE)</b>	2,055	1,943	+ 112	+ 5.8
<b>Employees (annual average) (FTE)</b>	1,984	1,915	+ 69	+ 3.6
<b>Employee satisfaction (SI)</b>	-	4.0	-	-
<b>Share of women as of Dec 31 (%)</b>	15.5	15.0	+ 0.5	-
<b>Sickness absence rate (%)</b>	3.9	4.6	- 0.7	-
<b>Share of renewable energies in the DB traction current mix (%)</b>	68	65.4	-	-
<b>INFRASTRUCTURE</b>				
<b>Traction current grid (km)</b>	7,956	7,956	-	-
<b>Power, converter and transformer stations</b>	53	54	- 1	- 1.9
<b>Transformer substations</b>	190	190	-	-
<b>Rectifiers</b>	119	117	+ 2	+ 1.7
<b>Transformer stations</b>	1,833	1,834	- 1	- 0.1
<b>Gas stations</b>	174	180	- 6	- 3.3
<b>Mean voltage networks with transformer stations</b>	164	165	- 1	- 0.6
<b>Train preheating plants</b>	131	141	- 10	- 7.1

<sup>1)</sup> Preliminary figures (not rounded).

## DB Schenker

	2023	2022	± absolute	±%
<b>PERFORMANCE FIGURES</b>				
<b>Shipments in land transport</b> (million)	<b>100.8</b>	<b>102.8</b>	<b>- 2.0</b>	<b>- 1.9</b>
<b>Air freight volume (export)</b> (thousand t)	<b>1,148</b>	<b>1,326</b>	<b>- 178</b>	<b>- 13.4</b>
<b>Ocean freight volume (export)</b> (thousand TEU)	<b>1,783</b>	<b>1,909</b>	<b>- 126</b>	<b>- 6.6</b>
<b>Warehouse space contract logistics</b> (million m <sup>2</sup> )	<b>8.5</b>	<b>8.6</b>	<b>- 0.1</b>	<b>- 1.2</b>
<b>FINANCIAL FIGURES</b>				
<b>Total revenues</b> (€ million)	<b>19,127</b>	<b>27,604</b>	<b>- 8,477</b>	<b>- 30.7</b>
thereof external revenues	19,104	27,545	- 8,441	- 30.6
thereof land transport line of business	7,852	7,852	-	-
thereof air and ocean freight line of business	8,535	16,530	- 7,995	- 48.4
thereof contract logistics line of business	2,741	3,195	- 454	- 14.2
<b>Gross profit margin</b> (%)	<b>40.9</b>	<b>30.9</b>	<b>+ 10.0</b>	<b>-</b>
<b>EBITDA adjusted</b> (€ million)	<b>1,909</b>	<b>2,512</b>	<b>- 603</b>	<b>- 24.0</b>
<b>EBIT adjusted</b> (€ million)	<b>1,129</b>	<b>1,841</b>	<b>- 712</b>	<b>- 38.7</b>
<b>EBIT margin (adjusted)</b> (%)	<b>5.9</b>	<b>6.7</b>	<b>- 0.8</b>	<b>-</b>
<b>Gross capital expenditures</b> (€ million)	<b>950</b>	<b>946</b>	<b>+ 4</b>	<b>+ 0.4</b>
<b>FURTHER KEY FIGURES</b>				
<b>Customer satisfaction</b> (grade)	<b>2.2</b>	<b>2.5</b>	<b>- 0.3</b>	<b>-</b>
<b>Employees</b> as of Dec 31 (FTE)	<b>72,710</b>	<b>76,591</b>	<b>- 3,881</b>	<b>- 5.1</b>
<b>Employees</b> (annual average) (FTE)	<b>75,062</b>	<b>75,907</b>	<b>- 845</b>	<b>- 1.1</b>
<b>Employee satisfaction</b> (SI)	<b>-</b>	<b>4.0</b>	<b>-</b>	<b>-</b>
<b>Share of women</b> as of Dec 31 (%)	<b>36.4</b>	<b>36.7</b>	<b>- 0.3</b>	<b>-</b>
<b>Sickness absence rate in Germany</b> (%)	<b>5.2</b>	<b>6.2</b>	<b>- 1.0</b>	<b>-</b>
<b>Specific CO<sub>2</sub>e emissions (land transport) compared to 2006</b> (based on tkm) <sup>1)</sup> (%)	<b>- 29.4</b>	<b>- 29.4</b>	<b>-</b>	<b>-</b>
<b>Specific CO<sub>2</sub>e emissions (air freight) compared to 2006</b> (based on tkm) <sup>1)</sup> (%)	<b>- 15.5</b>	<b>- 16.2</b>	<b>+ 0.7</b>	<b>-</b>
<b>Specific CO<sub>2</sub>e emissions (ocean freight) compared to 2006</b> (based on tkm) <sup>1)</sup> (%)	<b>- 66.7</b>	<b>- 67.2</b>	<b>+ 0.5</b>	<b>-</b>

<sup>1)</sup> In 2022 specific CO<sub>2</sub> emissions.

# 10-YEAR SUMMARIES

## Rail performance figures

	2023	2022	2021	2020
<b>PASSENGER TRANSPORT</b>				
<b>Passengers (million)</b>	<b>1,837</b>	<b>1,737</b>	<b>1,413</b>	<b>1,499</b>
DB Long-Distance	140	132	82	81
Regional transport (DB Regional and other)	1,697	1,605	1,121	1,215
Regional transport (DB Arriva)	-	-	210	202
<b>Volume sold (million pkm)</b>	<b>82,943</b>	<b>76,475</b>	<b>50,831</b>	<b>51,933</b>
DB Long-Distance	45,459	41,720	24,762	23,542
Regional transport (DB Regional and other)	37,485	34,754	21,407	23,897
Regional transport (DB Arriva)	-	-	4,663	4,494
<b>FREIGHT TRANSPORT</b>				
<b>Freight carried (million t)</b>	<b>197.6</b>	<b>222.3</b>	<b>226.5</b>	<b>213.1</b>
<b>Volume sold (million tkm)</b>	<b>74,458</b>	<b>84,468</b>	<b>84,850</b>	<b>78,670</b>
<b>INFRASTRUCTURE</b>				
<b>Train kilometers on track infrastructure (million train-path km)</b>	<b>1,118</b>	<b>1,133</b>	<b>1,109</b>	<b>1,066</b>
thereof non-Group railways	438	420	414	386

From 2022 excluding DB Arriva.

## Employees

	2023	2022	2021	2020
<b>FULL-TIME EMPLOYEES (FTE)</b>				
Annual average	290,507	283,672	323,605	321,889
As of Dec 31	292,423	286,077	323,716	322,768
<b>NATURAL PERSONS (NP)</b>				
Annual average	301,661	294,499	337,129	335,646
As of Dec 31	304,010	296,972	336,990	336,278

From 2022 excluding DB Arriva.



	2019	2018	2017	2016	2015	2014
	<b>2,603</b>	<b>2,581</b>	<b>2,564</b>	<b>2,365</b>	<b>2,251</b>	<b>2,254</b>
	151	148	142	139	132	129
	1,972	1,940	1,933	1,883	1,883	1,902
	480	494	488	343	236	223
	<b>98,402</b>	<b>97,707</b>	<b>95,854</b>	<b>91,652</b>	<b>88,636</b>	<b>88,407</b>
	44,151	42,827	40,548	39,516	36,975	36,102
	41,634	41,880	41,972	40,905	42,681	43,667
	12,617	12,999	13,334	11,230	8,980	8,638
	<b>232.0</b>	<b>255.5</b>	<b>271.0</b>	<b>277.4</b>	<b>300.2</b>	<b>329.1</b>
	<b>85,005</b>	<b>88,237</b>	<b>92,651</b>	<b>94,698</b>	<b>98,445</b>	<b>102,871</b>
	<b>1,090</b>	<b>1,086</b>	<b>1,073</b>	<b>1,068</b>	<b>1,054</b>	<b>1,044</b>
	368	349	331	322	290	261
	2019	2018	2017	2016	2015	2014
	322,378	316,901	308,671	302,204	297,170	296,094
	323,944	318,528	310,935	306,368	297,202	295,763
	335,842	329,606	322,443	313,338	308,097	307,309
	337,911	331,568	323,381	318,332	308,373	306,966

## Statement of income

€ million	2023	2022	2021	2020
Revenues	45,191	52,085	47,075	39,901
Inventory changes and internally produced and capitalized assets	4,626	4,115	3,884	3,564
Overall performance	49,817	56,200	50,959	43,465
Other operating income	3,354	4,157	5,901	3,439
Cost of materials	-25,276	-32,017	-28,419	-22,757
Personnel expenses	-19,604	-18,288	-19,219	-18,297
Depreciation, amortization and impairments <sup>1)</sup>	-3,912	-3,576	-3,804	-5,372
Other operating expenses <sup>1)</sup>	-5,652	-5,037	-5,716	-5,235
<b>Operating profit / loss (EBIT)</b>	<b>-1,273</b>	<b>1,439</b>	<b>-298</b>	<b>-4,757</b>
Result from investments accounted for using the equity method	9	-7	-10	-21
Net interest income <sup>1)</sup>	-617	-351	-528	-615
Other financial result	-78	9	48	-91
<b>Financial result</b>	<b>-686</b>	<b>-349</b>	<b>-490</b>	<b>-727</b>
<b>Profit / loss before taxes on income</b>	<b>-1,959</b>	<b>1,090</b>	<b>-788</b>	<b>-5,484</b>
Taxes on income	-73	-1,143	-123	-223
<b>Net profit / loss for the year</b>	<b>-2,351</b>	<b>-227</b>	<b>-911</b>	<b>-5,707</b>
Dividend payment (for previous year)	650	-	-	650

From 2022 excluding DB Arriva.

<sup>1)</sup> Limited comparability to previous years' figures from 2019 onwards due to IFRS 16 effect (inclusion of leasing activities).

## Operating profit figures / Key economic performance indicators

€ million	2023	2022	2021	2020
EBITDA adjusted <sup>1)</sup>	2,877	4,783	2,287	1,002
EBIT adjusted	-964	1,225	-1,552	-2,903
Capital employed as of Dec 31 <sup>1)</sup>	48,300	45,289	43,020	41,764
Return on capital employed (ROCE) <sup>1)</sup> (%)	-2.0	2.7	-3.6	-7.0
Debt coverage (%)	5.2	11.8	4.3	0.8
Gearing <sup>1)</sup> (%)	280	196	274	404
Net debt / EBITDA adjusted <sup>1)</sup> (multiple)	13.4	6.9	15.4	36.8

From 2022 excluding DB Arriva (excluding the Group balance sheet).

<sup>1)</sup> Limited comparability to previous years' figures from 2019 onwards due to IFRS 16 effect (inclusion of leasing activities).





	2019	2018	2017	2016	2015	2014
	44,430	44,065	42,693	40,557	40,403	39,728
	3,166	3,091	2,900	2,741	2,699	2,694
	47,596	47,156	45,593	43,298	43,102	42,422
	3,030	2,998	2,954	2,834	2,772	2,824
	-22,262	-22,258	-21,457	-20,101	-20,208	-20,250
	-18,152	-17,301	-16,665	-15,876	-15,599	-14,919
	-3,671	-2,688	-2,847	-3,017	-4,471	-3,190
	-5,157	-6,088	-5,890	-5,677	-5,750	-5,057
	<b>1,384</b>	<b>1,819</b>	<b>1,688</b>	<b>1,461</b>	<b>-154</b>	<b>1,830</b>
	-12	12	14	33	22	8
	-655	-645	-704	-772	-800	-898
	-36	-14	-30	-16	0	-3
	<b>-703</b>	<b>-647</b>	<b>-720</b>	<b>-755</b>	<b>-778</b>	<b>-893</b>
	<b>681</b>	<b>1,172</b>	<b>968</b>	<b>706</b>	<b>-932</b>	<b>937</b>
	-1	-630	-203	10	-379	51
	<b>680</b>	<b>542</b>	<b>765</b>	<b>716</b>	<b>-1,311</b>	<b>988</b>
	650	450	600	850	700	200
	2019	2018	2017	2016	2015	2014
	5,436	4,739	4,930	4,797	4,778	5,110
	1,837	2,111	2,152	1,946	1,759	2,109
	42,999	36,657	35,093	33,066	33,459	33,683
	4.3	5.8	6.1	5.9	5.3	6.3
	15.3	17.6	18.7	18.1	19.0	20.3
	162	144	131	139	130	112
	5.6	4.8	4.5	4.6	4.3	4.0

## Cash flow/Capital expenditures

€ million	2023	2022	2021	2020
Cash flow from operating activities <sup>1)</sup>	3,044	5,644	3,900	1,420
Gross capital expenditures <sup>1)</sup>	16,867	15,098	15,387	14,402
Net capital expenditures <sup>1)</sup>	7,578	6,524	6,342	5,886

From 2022 excluding DB Arriva.

<sup>1)</sup> Limited comparability to previous years' figures from 2019 onwards due to IFRS 16 effect (inclusion of leasing activities).

## Balance sheet

AS OF DEC 31 / € million	2023	2022	2021	2020
Non-current assets <sup>1)</sup>	60,966	59,044	56,149	52,964
thereof property, plant and equipment and intangible assets <sup>1)</sup>	56,856	55,122	52,487	49,994
thereof deferred tax assets	652	510	1,305	1,164
Current assets	16,506	17,259	15,694	12,471
thereof cash and cash equivalents	2,631	5,138	4,591	3,411
Equity	12,126	14,679	10,621	7,270
thereof hybrid capital	2,002	2,002	2,002	2,002
Equity ratio <sup>1)</sup> (%)	15.6	19.2	14.8	11.1
Non-current liabilities <sup>1)</sup>	42,369	39,145	39,631	37,686
thereof financial debt <sup>1)</sup>	33,971	31,186	30,322	27,070
thereof pension obligations	3,492	2,970	5,031	6,517
Current liabilities <sup>1)</sup>	22,977	22,479	21,591	20,479
thereof financial debt <sup>1)</sup>	4,137	4,087	4,164	6,254
Net financial debt <sup>1)</sup>	33,953	28,827	29,107	29,345
Total assets <sup>1)</sup>	77,472	76,303	71,843	65,435

<sup>1)</sup> Limited comparability to previous years' figures from 2019 onwards due to IFRS 16 effect (inclusion of leasing activities).



	2019	2018	2017	2016	2015	2014
	3,278	3,371	2,329	3,648	3,489	3,896
	13,093	11,205	10,464	9,510	9,344	9,129
	5,646	3,996	3,740	3,320	3,866	4,442

	2019	2018	2017	2016	2015	2014
	53,213	46,646	45,625	45,290	45,199	45,530
	50,485	44,487	43,207	42,575	42,821	43,217
	1,246	1,032	1,416	1,511	1,335	1,604
	12,615	11,881	10,811	11,034	10,860	10,353
	3,993	3,544	3,397	4,450	4,549	4,031
	14,927	13,592	14,238	12,657	13,445	14,525
	1,997	-	-	-	-	-
	22.7	23.2	25.2	22.5	24.0	26.0
	32,820	29,104	27,510	28,525	28,091	28,527
	23,977	20,626	19,716	20,042	19,753	19,173
	5,354	4,823	3,940	4,522	3,688	4,357
	18,081	15,831	14,688	15,142	14,523	12,831
	4,716	2,618	2,360	2,439	2,675	1,161
	24,175	19,549	18,623	17,624	17,491	16,212
	65,828	58,527	56,436	56,324	56,059	55,883

## Strong Rail top targets

	2023	2022	2021	2020	2019	2018	2017	2016
<b>SHIFT IN MODE OF TRANSPORT (RAIL IN GERMANY)</b>								
Volume sold long-distance transport (million pkm)	45,459	41,720	24,762	23,542	44,151	42,827	40,548	39,516
Passengers (regional)(million)	1,697	1,605	1,121	1,215	1,972	1,940	1,933	1,883
Volume sold rail freight transport (million tkm)	51,905	59,607	60,324	56,224	60,702	64,169	67,566	68,630
Train kilometers on track infrastructure (million train-path km)	1,117	1,133	1,109	1,066	1,090	1,085	1,073	1,067
Condition grade high-performance network (grade)	3.1	-	-	-	-	-	-	-
<b>CUSTOMER SATISFACTION (RAIL IN GERMANY) (GRADE)</b>								
DB Long-Distance	2.7	2.7	2.5	2.4	2.7 <sup>1)</sup>	-	-	-
DB Regional	2.2	2.2	2.0	2.1	2.2	-	-	-
DB Cargo	2.8	2.7	2.5	2.6	3.0	3.0	2.7	2.8
<b>PUNCTUALITY (RAIL IN GERMANY) (%)</b>								
DB Long-Distance	64.0	65.2	75.2	81.8	75.9	74.9	78.5	78.9
DB Regional	91.0	91.8	94.3	95.6	94.3	94.0	94.4	94.8
DB Cargo (Germany)	70.5	66.1	69.8	77.6	73.8	72.9	73.4	76.2
Punctuality (whole journey) (DB Long-Distance)	68.9	69.3	76.8	84.3	80.8	80.1	84.3	-
<b>ENVIRONMENTAL (RAIL IN GERMANY)</b>								
Share of renewable energies in the DB traction current mix <sup>2)</sup> (%)	68	65.4	62.4	61.4	60.2	57.2	-	-
Absolute greenhouse gas emissions scopes 1 and 2 (million t)	3.3	-	-	-	-	-	-	-
<b>SOCIAL</b>								
Employee satisfaction <sup>3)</sup> (SI)	-	3.9	-	3.9	-	3.7	-	3.7
Women in leadership (%)	29.4	27.0	25.4	24.4	-	-	-	-
<b>ECONOMIC</b>								
ROCE <sup>4)</sup> (%)	-2.0	2.7	-3.6	-7.0	4.3	5.8	6.1	5.9
Debt coverage (%)	5.2	11.8	4.3	0.8	15.3	17.6	18.7	18.1

<sup>1)</sup> July - December 2019.

<sup>2)</sup> The data for 2023 represents a forecast as of February 2024. Since 2023 the share of renewable energies is presented separately without support from the Renewable Energy Sources Act (Erneuerbare-Energien-Gesetz; EEG).

<sup>3)</sup> The employee survey is conducted every two years.

<sup>4)</sup> Limited comparability to previous years' figures from 2019 onwards due to IFRS 16 effect (inclusion of leasing activities).

# CONTACT INFORMATION

## Investor Relations and Sustainable Finance

### Deutsche Bahn AG

Investor Relations and Sustainable Finance  
Europaplatz 1  
10557 Berlin  
Germany  
Tel. +49-30-2 97-6 40 31  
ir@deutschebahn.com  
[db.de/ir-e](https://db.de/ir-e) 



## Communications

### Deutsche Bahn AG


Press office DB Group 24/7  
Contact persons for journalists:  
available around-the-clock  
Potsdamer Platz 2  
10785 Berlin  
Germany  
Tel. +49-30-2 97-6 10 30  
presse@deutschebahn.com  
[deutschebahn.de/en/presse](https://deutschebahn.de/en/presse) 



## Service numbers

### DB SERVICE NUMBER

+49-30-2 97-0 — Our service number gives you direct access to all of our telephone services (local rate charges apply). These services include finding ticket prices and train times, information about services of Deutsche Bahn and our frequent traveler system (BahnCard).

Leisure and business travelers can find further contact information [online](#) .



## SOCIAL MEDIA

### DB Group

DB Group has an extensive presence on various social media channels: Facebook, Instagram, YouTube, LinkedIn, TikTok, X (former Twitter) and Threads.

### Passenger transport

Our passenger transport is available on various social media channels for conversations, discussions, and for service and product questions: on Facebook, Instagram, YouTube, WhatsApp, X (former Twitter), LinkedIn and Threads.



## Management representatives for the Federal states

### **BADEN-WÜRTTEMBERG**

**Dr. Clarissa Freundorfer**

Presselstraße 17  
70191 Stuttgart  
Germany  
Tel. +49-711-20 92-33 00

### **BAVARIA**

**Klaus-Dieter Josel**

Richelstraße 3  
80634 Munich  
Germany  
Tel. +49-89-13 08-33 00

### **BERLIN, BRANDENBURG, MECKLENBURG- WEST POMERANIA**

**Alexander Kaczmarek**

BERLIN OFFICE:  
Europaplatz 2  
10557 Berlin  
Germany  
Tel. +49-30-297-61010

POTSDAM OFFICE:  
Babelsberger Straße 18  
14473 Potsdam  
Germany  
Tel. +49-331-235-68 00

### **BREMEN, HAMBURG, LOWER SAXONY, SCHLESWIG-HOLSTEIN**

**Ute Plambeck**

HAMBURG OFFICE:  
Hammerbrookstraße 44  
20097 Hamburg  
Germany  
Tel. +49-40-3918-30 00

HANOVER OFFICE:  
Rundestraße 11  
30161 Hanover  
Germany  
Tel. +49-511-2 86-33 00

### **HESSE, RHINELAND-PALATINATE, SAARLAND**

**Dr. Klaus Vornhusen**

FRANKFURT AM MAIN OFFICE:  
Weilburger Straße 22  
60326 Frankfurt am Main  
Germany  
Tel. +49-69-2 65-2 47 00  
SAARBRÜCKEN OFFICE:  
Am Hauptbahnhof 4  
66111 Saarbrücken  
Germany  
Tel. +49-06 81-3 08-33 00

### **NORTH RHINE- WESTPHALIA**

**Werner Lübberink**

Willi-Becker-Allee 11  
40227 Düsseldorf  
Germany  
Tel. +49-211-36 80-20 00

### **SAXONY, SAXONY-ANHALT, THURINGIA**

**Martin Walden**

Richard-Wagner-Straße 3  
04109 Leipzig  
Germany  
Tel. +49-3 41-9 68-33 00

# FINANCIAL CALENDAR

**July 25, 2024**

Interim Results Press Conference,  
publication of the  
Integrated Interim Report  
January–June 2024

Investor Relations  
[db.de/ir-e](https://www.db.de/ir-e) 



**March 27, 2025**

Annual Results Press Conference,  
publication of the  
2024 Integrated Report

2023 Integrated Report  
[db.de/ib-e](https://www.db.de/ib-e) 



## SUSTAINABLE PRODUCTION



### Paper from certified sustainable production.

The printing company is certified according to FSC® and PEFC standards. Each year, suitable audits are performed to review compliance with the strict rules in place for handling certified paper.



**RECYCLED**  
Paper made from  
recycled material  
**FSC® C016267**



### Mineral oil-free printing inks.

This brochure was printed using mineral oil-free inks based on renewable raw materials.



### Conserving resources.

Using no-process printing plates saves on development, cleaning and rubberizing after exposure. Chemicals and fresh water are no longer used to wash the printing plates, and power consumption is being reduced.



### Energy-efficient printing.

An energy management strategy has been implemented at the printing company and an energy audit was carried out in accordance with DIN EN 16247-1.

## Imprint

Concept, editing: Deutsche Bahn AG, Investor Relations  
and Sustainable Finance, Berlin

Design concept, typesetting: Studio Delhi, Mainz

Proofreading: AdverTEXT, Düsseldorf

Lithography: Die Lithografen GmbH, Darmstadt

Printing: W. Kohlhammer Druckerei GmbH + Co. KG, Stuttgart

Photography:  Coverpage DB AG/Michael Neuhaus

 2 DB AG/Pablo Castagnola/iStock/Mirror Image Studio

Individual figures in this brochure are rounded and therefore may not add up.

**Deutsche Bahn AG**  
Potsdamer Platz 2  
10785 Berlin  
Germany

[www.deutschebahn.com/en](http://www.deutschebahn.com/en)

